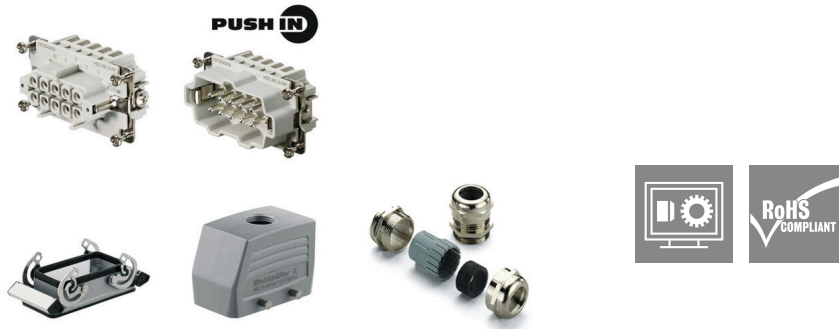


HDC KIT HE-P 10.111

Weidmüller Interface GmbH & Co. KG
 Klingenbergstraße 26
 D-32758 Detmold
 Germany

www.weidmueller.com



HDC kits are standardized kits for assembling complete plug-in connectors.

The HDC kits normally consist of a male insert, a female insert, a plug housing, a bulkhead housing and a cable gland.

Weidmüller offers a range of standard connector combinations with metric or PG cable entry threads.

The PUSH IN connection is a direct-insert method of connection. The preprocessed wire can be inserted directly into the wire connection without the need for any tools.

General ordering data

Version	RockStar® HDC kits-Heavy-duty connectors, Kit, HE, Installation size: 4, Poles: 10, PUSH IN, 500 V, 16 A, diecast aluminium, PG 16
Order No.	1061730000
Type	HDC KIT HE-P 10.111
GTIN (EAN)	4032248816439
Qty.	1 items

HDC KIT HE-P 10.111

Weidmüller Interface GmbH & Co. KG
 Klingenbergstraße 26
 D-32758 Detmold
 Germany

www.weidmueller.com

Technical data

Approvals

Approvals



ROHS Conform

Dimensions and weights

Net weight 440 g

Temperatures

Limit temperature -40 °C ... 100 °C

Environmental Product Compliance

RoHS Compliance Status Compliant with exemption

RoHS Exemption (if applicable/known) 6c

REACH SVHC Lead 7439-92-1, Potassium perfluorobutane sulfonate 29420-49-3

SCIP bfb1c983-6f18-4ba4-8907-38aad6aee076

General data

Surface finish	Powder coating	Protection degree	IP65
Series	HE		

Version

Size of cable entries	PG 16	Number of cable entry on top	0
Number of cable entry sideways	0	Type of connection	PUSH IN
Design of locking system	Side-locking clamp on lower side	Installation size	4
Sealing	NBR	Colour (RAL)	RAL 7035
BG	4		

General data

Number of poles	10	Connection type PE	Screw connection
Installation size	4	Cable gland	PG 16
Basic material	diecast aluminium	Series	HE
Rated voltage (DIN EN 61984)	500 V	Rated current (DIN EN 61984)	16 A
BG	4		

Version

Type of connection	PUSH IN	Installation size	4
Conductor cross-section, max.	4 mm ²	Conductor cross-section, min.	0.5 mm ²
Surface finish	Powder coating	Basic material	diecast aluminium
BG	4		

Classifications

ETIM 8.0	EC002943	ETIM 9.0	EC002943
ETIM 10.0	EC002943	ECLASS 14.0	27-44-02-92
ECLASS 15.0	27-44-02-92		