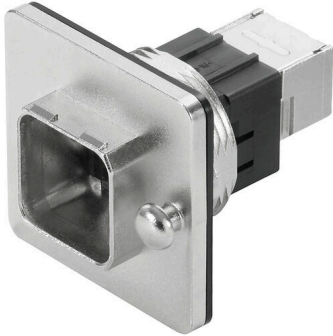


IE-BSC-V14M-RJ45-C**Weidmüller Interface GmbH & Co. KG**

Klingenbergstraße 26

D-32758 Detmold

Germany

www.weidmueller.com

PushPull plug-in connector set according to IEC
61076-3-117 ver.14 (PROFINET), metal incl. RJ45 insert

General ordering data

Version	Flange RJ45, IP67, Variant 14 metal, RJ45-RJ45 coupler, Central locking flange with RJ45 adapter, Cat.6A / Class EA (ISO/IEC 11801 2010)
Order No.	1058250000
Type	IE-BSC-V14M-RJ45-C
GTIN (EAN)	4032248799350
Qty.	10 items

IE-BSC-V14M-RJ45-C

Weidmüller Interface GmbH & Co. KG
 Klingenbergstraße 26
 D-32758 Detmold
 Germany

www.weidmueller.com

Technical data

Approvals

Approvals



ROHS Conform
 UL File Number Search [UL Website](#)
 Certificate no. (cULus) E316369

Dimensions and weights

Net weight 73.53 g

Temperatures

Storage temperature Operating temperature -40 °C...70 °C
 Installation temperature

Environmental Product Compliance

RoHS Compliance Status Compliant with exemption
 RoHS Exemption (if applicable/known) 6c
 REACH SVHC Lead 7439-92-1
 SCIP 4f3aae94-c2bc-4010-b63b-5b114ba6bd55

General data

Connection 1	RJ45	Connection 2	RJ45
Description of article	Variant 14 metal, RJ45-RJ45 coupler, Central locking flange with RJ45 adapter	Seal material	NBR
Housing main material	Zinc diecast	Category	Cat.6A / Class EA (ISO/IEC 11801 2010)
Contact surface	Gold over nickel	Sheath diameter, min.	5 mm
Sheath diameter, max.	10 mm	Type of mounting	Central cable gland
Shielding	360°; all-round enclosure	Protection degree	IP67
Plugging cycles	750		

Electrical properties

Dielectric strength, contact / shield ≥ 1500 V AC/DC Dielectric strength, contact / contact ≥ 1000 V AC/DC

General standards

Connector standard IEC 61076-3-117 Var. 14, IEC 60603-7-51 Certificate no. (cULus) E316369

Classifications

ETIM 8.0	EC001121	ETIM 9.0	EC001121
ETIM 10.0	EC001121	ECLASS 14.0	27-44-03-90
ECLASS 15.0	27-44-03-90		

Installation cut-out

