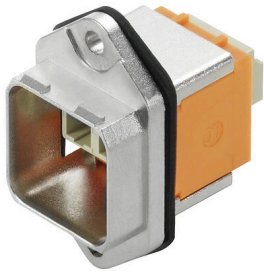


## IE-BSS-V14M-LCD-MM-C

**Weidmüller Interface GmbH & Co. KG**  
Klingenbergstraße 26  
D-32758 Detmold  
Germany

www.weidmueller.com



PushPull plug-in connector set according to IEC  
61076-3-117 ver.14 (PROFINET), metal incl. LC insert

### General ordering data

Version	Flange FO, IP67, Variant 14 standardized flange, LC Duplex coupling, Multimode
Order No.	<a href="#">1058130000</a>
Type	IE-BSS-V14M-LCD-MM-C
GTIN (EAN)	4032248799244
Qty.	10 items

## IE-BSS-V14M-LCD-MM-C

**Weidmüller Interface GmbH & Co. KG**  
 Klingenbergstraße 26  
 D-32758 Detmold  
 Germany

www.weidmueller.com

## Technical data

### Approvals

ROHS	Conform
------	---------

### Dimensions and weights

Depth	33 mm	Depth (inches)	1.2992 inch
Height	42 mm	Height (inches)	1.6535 inch
Width	22.2 mm	Width (inches)	0.874 inch
Net weight	24.7 g		

### Temperatures

Storage temperature	Operating temperature	-40 °C...70 °C
Installation temperature		

### Environmental Product Compliance

RoHS Compliance Status	Compliant without exemption
REACH SVHC	No SVHC above 0.1 wt%

### General data

Description of article	Variant 14 standardized flange, LC Duplex coupling	Colour	Miscellaneous
Housing main material	Zinc diecast	Type of mounting	2 screws
Protection degree	IP67	Plugging cycles	500
Fibre type	Multimode	Insertion loss	≤ 0.4 dB
Connection 1	LC Duplex	Connection 2	LC Duplex
Return loss (attenuation)	≥ 30 dB		

### General standards

Connector standard	IEC 61076-3-117 Var. 14, IEC 61754-20
--------------------	--

### Classifications

ETIM 8.0	EC000752	ETIM 9.0	EC000752
ETIM 10.0	EC000752	ECLASS 14.0	19-17-01-16
ECLASS 15.0	19-17-01-16		

**IE-BSS-V14M-LCD-MM-C**

**Weidmüller Interface GmbH & Co. KG**  
Klingenbergstraße 26  
D-32758 Detmold  
Germany

**Drawings**

[www.weidmueller.com](http://www.weidmueller.com)

**Installation cut-out**

