

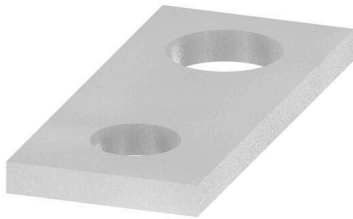
WQL 2/WDU10-2.5**Weidmüller Interface GmbH & Co. KG**

Klingenbergstraße 26

D-32758 Detmold

Germany

www.weidmueller.com



The distribution or multiplication of a potential to adjoining terminal blocks is realized via a cross-connection. Additional wiring effort can be easily avoided. Even if the poles are broken out, contact reliability in the terminal blocks is still ensured. Our portfolio offers pluggable and screwable cross-connection systems for modular terminal blocks.

General ordering data

Version	Cross-connector (terminal), when screwed in, Silver grey, 24 A, Number of poles: 2, Pitch in mm (P): 8.00, Insulated: No, Width: 6 mm
Order No.	1056600000
Type	WQL 2/WDU10-2.5
GTIN (EAN)	4008190061449
Qty.	100 items

WQL 2/WDU10-2.5

Weidmüller Interface GmbH & Co. KG
 Klingenbergstraße 26
 D-32758 Detmold
 Germany

www.weidmueller.com

Technical data

Approvals

ROHS	Conform
------	---------

Dimensions and weights

Depth	1 mm	Depth (inches)	0.0394 inch
Height	13.9 mm	Height (inches)	0.5472 inch
Width	6 mm	Width (inches)	0.2362 inch
Net weight	0.6 g		

Temperatures

Storage temperature	-25 °C...55 °C	Ambient temperature	-5 °C...40 °C
---------------------	----------------	---------------------	---------------

Environmental Product Compliance

RoHS Compliance Status	Compliant without exemption
REACH SVHC	No SVHC above 0.1 wt%

Material data

Basic material	tinned copper	Colour	Silver grey
----------------	---------------	--------	-------------

System specifications

Version	Cross-connector
---------	-----------------

Additional technical data

Type of fixing	when screwed in	Installation advice	Direct mounting
Explosion-tested version	No	Type of mounting	when screwed in

Dimensions

Pitch in mm (P)	8.00 mm
-----------------	---------

General

Number of poles	2	Installation advice	Direct mounting
-----------------	---	---------------------	-----------------

Rating data

Nominal current	24 A
-----------------	------

Classifications

ETIM 8.0	EC000489	ETIM 9.0	EC000489
ETIM 10.0	EC000489	ECLASS 14.0	27-25-03-03
ECLASS 15.0	27-25-03-03		