

LS 2.8 WDU2.5-10

Weidmüller Interface GmbH & Co. KG
Klingenbergstraße 26
D-32758 Detmold
Germany

www.weidmueller.com

Product image



With our wide range of KLBÜ shield connections, you can achieve flexible and self-adjusting shield contacting and ensure error-free plant operation.

General ordering data

Version	W-Series, Shield bus
Order No.	1056400000
Type	LS 2.8 WDU2.5-10
GTIN (EAN)	4008 190036454
Qty.	100 items

LS 2.8 WDU2.5-10

Weidmüller Interface GmbH & Co. KG
 Klingenbergstraße 26
 D-32758 Detmold
 Germany

www.weidmueller.com

Technical data

Approvals

ROHS	Conform
------	---------

Dimensions and weights

Depth	4.3 mm	Depth (inches)	0.1693 inch
Height	75.2 mm	Height (inches)	2.9606 inch
Width	1.15 mm	Width (inches)	0.0453 inch
Net weight	1.6 g		

Temperatures

Storage temperature	-25 °C...55 °C	Ambient temperature	-5 °C...40 °C
---------------------	----------------	---------------------	---------------

Environmental Product Compliance

RoHS Compliance Status	Compliant without exemption
REACH SVHC	No SVHC above 0.1 wt%

Material data

Basic material	tinned copper	Colour	Silver grey
----------------	---------------	--------	-------------

Additional technical data

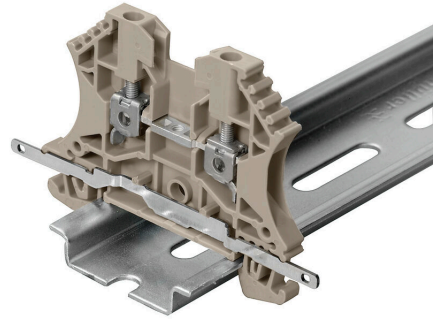
Type of fixing	Snap-on	Installation advice	Direct mounting
Explosion-tested version	No		

General

Installation advice	Direct mounting
---------------------	-----------------

Classifications

ETIM 8.0	EC002848	ETIM 9.0	EC002848
ETIM 10.0	EC002848	ECLASS 14.0	27-14-11-92
ECLASS 15.0	27-14-11-92		



LS 2.8 WDU2.5-10

Weidmüller Interface GmbH & Co. KG
 Klingenbergstraße 26
 D-32758 Detmold
 Germany

www.weidmueller.com

Accessories

Cable-lug sleeves



Insulated tab-connector sleeves made from PVC with copper sleeve

- Commercially available designs
- Not soldered
- With conical entry funnel

General ordering data

Type	LIF 1,5F288 R	Version
Order No.	9200520000	cable lug, terminal end, Insulated cable connector, 1,5 mm ² , 0,5 mm ² -
GTIN (EAN)	4032248410361	1,5 mm ² , red
Qty.	100 ST	
Type	VFSKHI/1,5-2,5/288	Version
Order No.	1491740000	cable lug, terminal end, Insulated cable connector, 2,5 mm ² , 1,5 mm ² -
GTIN (EAN)	4050118301472	2,5 mm ² , blue
Qty.	100 ST	
Type	VFSKHI/0,5-1,0/288	Version
Order No.	1491650000	cable lug, terminal end, Insulated cable connector, 1 mm ² , 0,5 mm ² - 1
GTIN (EAN)	4050118301519	mm ² , red
Qty.	100 ST	
Type	VFSKHI/0,1-0,5/288	Version
Order No.	1491630000	cable lug, terminal end, Insulated cable connector, 0,5 mm ² , 0,1 mm ² -
GTIN (EAN)	4050118301489	0,5 mm ² , yellow
Qty.	100 ST	

Cable-lug sleeves, fully insulated



Fully-insulated tab-connector sleeves made from PVC with copper sleeve

- Commercially available designs
- Not soldered
- With conical entry funnel

General ordering data

Type	VFSKHV/0,5-1,0/288	Version
Order No.	1491870000	cable lug, terminal end, Insulated cable connector, 1 mm ² , 0,5 mm ² - 1
GTIN (EAN)	4050118301908	mm ² , red
Qty.	100 ST	