

LS 2.8 WDU2.5-10

Weidmüller Interface GmbH & Co. KG
Klingenbergstraße 26
D-32758 Detmold
Germany

www.weidmueller.com

Product image

With our wide range of KLBÜ shield connections, you can achieve flexible and self-adjusting shield contacting and ensure error-free plant operation.

General ordering data

Version	W-Series, Shield bus
Order No.	1056400000
Type	LS 2.8 WDU2.5-10
GTIN (EAN)	4008 190036454
Qty.	100 items

LS 2.8 WDU2.5-10

Weidmüller Interface GmbH & Co. KG
 Klingenbergstraße 26
 D-32758 Detmold
 Germany

www.weidmueller.com

Technical data

Approvals

ROHS Conform

Dimensions and weights

Depth	4.3 mm	Depth (inches)	0.1693 inch
Height	75.2 mm	Height (inches)	2.9606 inch
Width	1.15 mm	Width (inches)	0.0453 inch
Net weight	1.6 g		

Temperatures

Storage temperature -25 °C...55 °C Ambient temperature -5 °C...40 °C

Environmental Product Compliance

RoHS Compliance Status Compliant without exemption
 REACH SVHC No SVHC above 0.1 wt%

Material data

Basic material tinned copper Colour Silver grey

Additional technical data

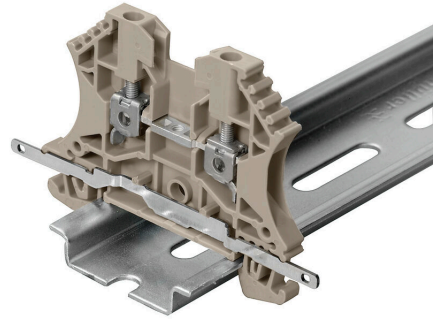
Type of fixing Snap-on Installation advice Direct mounting
 Explosion-tested version No

General

Installation advice Direct mounting

Classifications

ETIM 8.0	EC002848	ETIM 9.0	EC002848
ETIM 10.0	EC002848	ECLASS 14.0	27-14-11-92
ECLASS 15.0	27-14-11-92		



LS 2.8 WDU2.5-10

Weidmüller Interface GmbH & Co. KG
 Klingenbergstraße 26
 D-32758 Detmold
 Germany

www.weidmueller.com

Accessories

Cable-lug sleeves



Insulated tab-connector sleeves made from PVC with copper sleeve

- Commercially available designs
- Not soldered
- With conical entry funnel

General ordering data

Type	LIF 1,5F288 R	Version	
Order No.	9200520000	cable lug, terminal end, Insulated cable connector, 1,5 mm ² , 0,5 mm ² - 1,5 mm ² , red	
GTIN (EAN)	4032248410361		
Qty.	100 ST		
Type	VFSKHI/1,5-2,5/288	Version	
Order No.	1491740000	cable lug, terminal end, Insulated cable connector, 2,5 mm ² , 1,5 mm ² - 2,5 mm ² , blue	
GTIN (EAN)	4050118301472		
Qty.	100 ST		
Type	VFSKHI/0,5-1,0/288	Version	
Order No.	1491650000	cable lug, terminal end, Insulated cable connector, 1 mm ² , 0,5 mm ² - 1 mm ² , red	
GTIN (EAN)	4050118301519		
Qty.	100 ST		
Type	VFSKHI/0,1-0,5/288	Version	
Order No.	1491630000	cable lug, terminal end, Insulated cable connector, 0,5 mm ² , 0,1 mm ² - 0,5 mm ² , yellow	
GTIN (EAN)	4050118301489		
Qty.	100 ST		

Cable-lug sleeves, fully insulated



Fully-insulated tab-connector sleeves made from PVC with copper sleeve

- Commercially available designs
- Not soldered
- With conical entry funnel

General ordering data

Type	VFSKHV/0,5-1,0/288	Version	
Order No.	1491870000	cable lug, terminal end, Insulated cable connector, 1 mm ² , 0,5 mm ² - 1 mm ² , red	
GTIN (EAN)	4050118301908		
Qty.	100 ST		