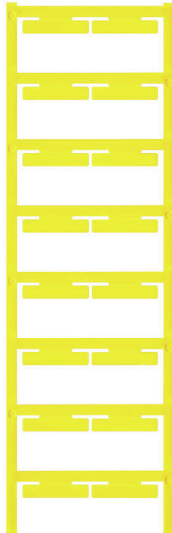


ELS 6/30 MC NE GE

Weidmüller Interface GmbH & Co. KG
Klingenbergstraße 26
D-32758 Detmold
Germany

www.weidmueller.com



ELS MultiCard markers can be printed with a PrintJet, plotter or SMark printer. In particular, colour printing with PrintJet AVANCED allows the eye-catching identification marking of cables and terminal strips in many ways.

ELS 6/30 for use in the WKM 8/30 cable markers or in the EM8/30 group-tag carriers

ELS 7/40 for use in the SchT5S group-tag carriers

ELS 16/40 for use in the WKM 18/43 cable markers or the SchT5 group-tag carriers

For custom printing: Please send us a file of our labeling software M-Print PRO or M-Print PRO Online (without installation) for your labeling specifications.

General ordering data

Version	ELS, Insert markers, 7 - 115 mm, 30 x 6 mm, yellow
Order No.	1045580000
Type	ELS 6/30 MC NE GE
GTIN (EAN)	4032248779482
Qty.	80 items

ELS 6/30 MC NE GE

Weidmüller Interface GmbH & Co. KG
 Klingenbergstraße 26
 D-32758 Detmold
 Germany

www.weidmueller.com

Technical data

Approvals

ROHS	Conform
------	---------

Dimensions and weights

Depth	0.8 mm	Depth (inches)	0.0315 inch
Height	30 mm	Height (inches)	1.1811 inch
Width	6 mm	Width (inches)	0.2362 inch
Net weight	0.97 g		

Temperatures

Operating temperature range	-40...100 °C
-----------------------------	--------------

Environmental Product Compliance

RoHS Compliance Status	Compliant without exemption	
REACH SVHC	No SVHC above 0.1 wt%	
Product Carbon Footprint	Cradle to gate	0.01 kg CO2 eq.

General data

Material colour according to resistance code	4	
Number per sheet	16	
Type of printing	neutral	
Version	halogen-free	
Width	6 mm	
UL 94 flammability rating	V-2	
Operating temperature range, max.	100 °C	
Operating temperature range, min.	-40 °C	
Colour	yellow	
Halogen	No	
Basic material	Polyamide 66	
Printed characters	neutral	
Number of markers per packaging unit	Form of supply	MultiCard
compatible printer	PRINTJET CONNECT , MCP BASIC 2 , MCP PLUS 2	
Number of markers per combination	1 MultiCard = Insert markers	
Operating temperature range	-40...100 °C	

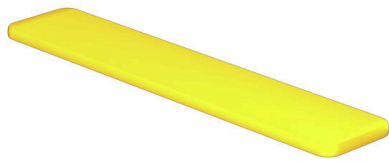
Conductor and cable markers

Halogen	No	Conductor O.D., max.	115 mm
Conductor O.D., min.	7 mm	Conductor O.D.	7 - 115 mm

Classifications

ETIM 8.0	EC001530	ETIM 9.0	EC001530
ETIM 10.0	EC001530	ECLASS 14.0	27-28-11-02
ECLASS 15.0	27-28-11-02		

Drawings



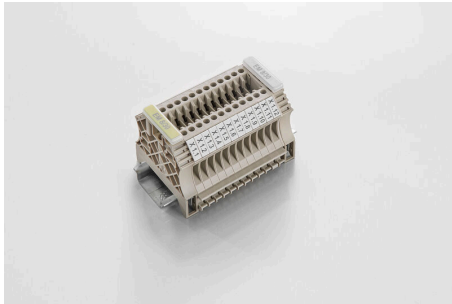
ELS 6/30 MC NE GE

Weidmüller Interface GmbH & Co. KG
 Klingenbergstraße 26
 D-32758 Detmold
 Germany

www.weidmueller.com

Accessories

EM 8/30 end bracket marker



The EM 8/30 end bracket marker is suitable for labelling the WEW 35/2 and ZEW 35/2 end brackets and can also be used as a group tag carrier for W-series terminals. The EM 8/30 can hold ESO 7/ESO 7P inlay tags. The pocket reliably protects the printing against environmental influences.

Inlay tags can be found under "Accessories".

General ordering data

Type	EM 8/30	Version	
Order No.	1806120000	EM, Terminal marker, 32.4 x 7.2 mm, Pitch in mm (P): 7.20	
GTIN (EAN)	4032248275298	Weidmueller, Transparent	
Qty.	50 ST		

WKM for inlay tags



The halogen-free, transparent pocket of the WKM offers outstanding protection against environmental influences. Thanks to firm fixation with cable ties, it is suitable for almost all wire cross-sections.

The pre-printed tags are simply inserted into the WKM holder and secured with a clip. WKM cable markers are the right solution for maximum efficiency in on-site marking. Your advantage when using WKM cables

- Paper and polyester labels can be printed individually with conventional office printers
- The robust design in combination with MultiCard ELS tags guarantees maximum protection against environmental influences

General ordering data

Type	WKM 8/30	Version	
Order No.	1631910000	WKM, Conductor and cable markers, 7 - 115 mm, 30 x 8 mm, Wire	
GTIN (EAN)	4008190206666	and cable markers, Transparent	
Qty.	50 ST		