

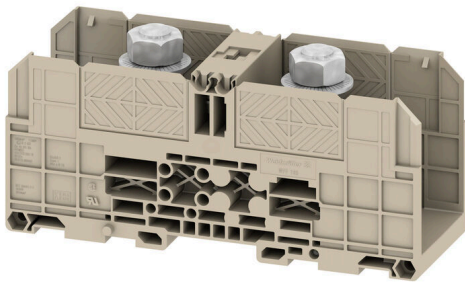
WFF 185**Weidmüller Interface GmbH & Co. KG**

Klingenbergstraße 26

D-32758 Detmold

Germany

www.weidmueller.com

Product image

To feed through power, signal, and data is the classical requirement in electrical engineering and panel building. The insulating material, the connection system and the design of the terminal blocks are the differentiating features. A feed-through terminal block is suitable for joining and/or connecting one or more conductors. They could have one or more connection levels that are on the same potential or insulated against one another.

General ordering data

| | |
|------------|---|
| Version | Bolt-type screw terminals, Feed-through terminal, Rated cross-section: 185 mm ² , Threaded stud connection |
| Order No. | 1028600000 |
| Type | WFF 185 |
| GTIN (EAN) | 4008190044091 |
| Qty. | 4 items |

WFF 185

Weidmüller Interface GmbH & Co. KG

Klingenbergstraße 26

D-32758 Detmold

Germany

www.weidmueller.com

Technical data

Approvals

Approvals



| | |
|---------------------------|----------------------------|
| ROHS | Conform |
| UL File Number Search | UL Website |
| Certificate No. (UR) | E60693 |
| Certificate No. (cURusEX) | E184763 |

Dimensions and weights

| | | | |
|--------------------------|-------------|----------------|-------------|
| Depth | 77.5 mm | Depth (inches) | 3.0512 inch |
| Depth including DIN rail | 87 mm | Height | 163 mm |
| Height (inches) | 6.4173 inch | Width | 55 mm |
| Width (inches) | 2.1654 inch | Net weight | 411.2 g |

Temperatures

| | | | |
|----------------------------------|----------------|----------------------------------|---------------|
| Storage temperature | -25 °C...55 °C | Ambient temperature | -5 °C...40 °C |
| Continuous operating temp., min. | -50 °C | Continuous operating temp., max. | 120 °C |

Environmental Product Compliance

| | |
|------------------------|-----------------------------|
| RoHS Compliance Status | Compliant without exemption |
| REACH SVHC | No SVHC above 0.1 wt% |

Material data

| | | | |
|---------------------------|-------|--------|------------|
| Basic material | Wemid | Colour | dark beige |
| UL 94 flammability rating | V-0 | | |

Rating data IECEx/ATEX

| | | | |
|--------------------|---------------|---------------------|----------|
| Marking EN 60079-7 | Ex eb II C Gb | Ex 2014/34/EU label | II 2 G D |
|--------------------|---------------|---------------------|----------|

System specifications

| | | | |
|-----------------------------------|-------|-------------------------------------|----|
| End cover plate required | Yes | Number of potentials | 1 |
| Number of levels | 1 | Number of clamping points per level | 2 |
| Levels cross-connected internally | No | PE connection | No |
| Mounting rail | TS 35 | | |

Additional technical data

| | | | |
|--------------------------|--------|-----------------------------|---------|
| Open sides | closed | Number of similar terminals | 1 |
| Explosion-tested version | Yes | Type of mounting | Snap-on |

CSA rating data

| | | | |
|-------------------------------|-----------|-----------------------|----------------|
| Wire cross section max. (CSA) | 500 kcmil | Voltage size C (CSA) | 600 V |
| Current size C (CSA) | 360 A | Certificate No. (CSA) | 200039-1244019 |

WFF 185

Weidmüller Interface GmbH & Co. KG

Klingenbergstraße 26
D-32758 Detmold
Germany

www.weidmueller.com

Technical data

| | | | |
|-------------------------------|-------|----------------------|-----|
| Voltage size D (CSA) | 600 V | Current size D (CSA) | 5 A |
| Wire cross section min. (CSA) | 8 AWG | | |

Conductors for clamping (rated connection)

| | | | |
|---|--------------------------|---|--------------------------|
| Cable lug to DIN 46234 | 10...240 mm ² | Cable lug to DIN 46235 | 25...240 mm ² |
| Wire connection cross section AWG, max. | kcmil 500 | Connection direction | on side |
| Tightening torque, max. | 31 Nm | Tightening torque, min. | 14 Nm |
| Type of connection | Threaded stud connection | Number of connections | 2 |
| Clamping range, max. | 240 mm ² | Clamping range, min. | 10 mm ² |
| Wire connection cross section AWG, min. | AWG 6 | Wire connection cross-section, finely stranded with wire-end ferrules DIN 46228/4, min. | 10 mm ² |
| Wire connection cross-section, finely stranded with wire-end ferrules DIN 46228/1, min. | 10 mm ² | Wire connection cross section, finely stranded, max. | 240 mm ² |
| Wire connection cross section, finely stranded, min. | 10 mm ² | Connection cross-section, stranded, max. | 240 mm ² |
| Connection cross-section, stranded, min. | 10 mm ² | Stud size for spade connection | M 12 |
| Wire connection cross-section, solid core, max. | 240 mm ² | Wire connection cross-section, solid core, min. | 10 mm ² |
| Connection cross-section, finely stranded, min. | 10 mm ² | 2 x cable lugs DIN 46 235 | 25...185 mm ² |
| 2 x cable lugs DIN 46 234 | 10...185 mm ² | | |

Dimensions

| | |
|--------------|---------|
| TS 15 offset | 13.5 mm |
|--------------|---------|

General

| | | | |
|---|---------------|---|-------|
| Wire connection cross section AWG, max. | kcmil 500 | Wire connection cross section AWG, min. | AWG 6 |
| Standards | IEC 60947-7-1 | Mounting rail | TS 35 |

Rating data

| | | | |
|--|---------------------|---------------------------------|---------------|
| Rated cross-section | 185 mm ² | Rated voltage | 1000 V |
| Rated DC voltage | 1500 V | Nominal current | 353 A |
| Current at maximum wires | 415 A | Standards | IEC 60947-7-1 |
| Volume resistance according to IEC 60947-7-x | 0.09 mΩ | Rated impulse withstand voltage | 8 kV |
| Power loss in accordance with IEC 60947-7-x | 11.30 W | Pollution severity | 3 |

UL rating data

| | | | |
|---|-----------|---|-------|
| Conductor size Factory wiring max. (UR) | 500 kcmil | Current size C (UR) | 380 A |
| Voltage size C (UR) | 1000 V | Conductor size Factory wiring min. (UR) | 8 AWG |
| Certificate No. (UR) | E60693 | Conductor size Field wiring min. (UR) | 8 AWG |
| Conductor size Field wiring max. (UR) | 500 AWG | | |

Classifications

| | | | |
|-------------|-------------|-------------|-------------|
| ETIM 8.0 | EC000897 | ETIM 9.0 | EC000897 |
| ETIM 10.0 | EC000897 | ECLASS 14.0 | 27-25-01-01 |
| ECLASS 15.0 | 27-25-01-01 | | |

Drawings



WFF 185

Weidmüller Interface GmbH & Co. KG

Klingenbergstraße 26

D-32758 Detmold

Germany

www.weidmueller.com

Accessories

Cross-connections

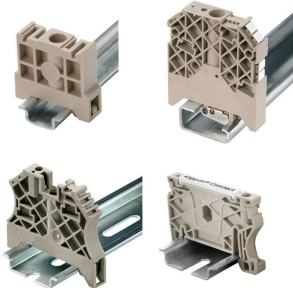


The distribution or multiplication of a potential to adjoining terminal blocks is realized via a cross-connection. Additional wiring effort can be easily avoided. Even if the poles are broken out, contact reliability in the terminal blocks is still ensured. Our portfolio offers pluggable and screwable cross-connection systems for modular terminal blocks.

General ordering data

| | | |
|------------|----------------------------|--|
| Type | WQL 2 WFF185 | Version |
| Order No. | 1065200000 | Bolt-type screw terminals, Cross-connector, Number of poles: 2 |
| GTIN (EAN) | 4008190044855 | |
| Qty. | 5 ST | |
| Type | WQL 3 WFF185 | Version |
| Order No. | 1065700000 | Bolt-type screw terminals, Cross-connector, Number of poles: 3 |
| GTIN (EAN) | 4008190140885 | |
| Qty. | 5 ST | |

End bracket



Weidmüller's range of products includes end brackets that guarantee a permanent, reliable mounting on the terminal rail and prevent sliding. Versions with and without screws are available. The end brackets include marking options, also for group markers, and also a test plug holder.

General ordering data

| | | |
|------------|----------------------------|--|
| Type | WEW 35/1 | Version |
| Order No. | 1059000000 | End bracket, dark beige, TS 35, V-2, Wemid, Width: 12 mm, 100 °C |
| GTIN (EAN) | 4008190172282 | |
| Qty. | 50 ST | |

Additional connection



The additional connection enables a separate voltage tap. This can be used, for example, for the emergency power supply before the main switch or simply as an additional connection within the application.

WFF 185

Weidmüller Interface GmbH & Co. KG
 Klingenbergstraße 26
 D-32758 Detmold
 Germany

www.weidmueller.com

Accessories

General ordering data

| | | | |
|------------|----------------------------|---------------------------------|--|
| Type | WZAF 185 | Version | |
| Order No. | 1066400000 | Auxiliary connection (terminal) | |
| GTIN (EAN) | 4008190031985 | | |
| Qty. | 10 ST | | |

Protection against contact

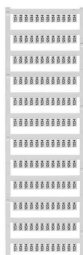


Our systems for touch protection ensure greater safety in your cabinet. They provide protection against electric shock caused by accidental contact with live parts due to operation or faults.

General ordering data

| | | | |
|------------|----------------------------|---|--|
| Type | WAH 185/300 BE | Version | |
| Order No. | 1064760000 | Bolt-type screw terminals, Hood, beige, 54 mm | |
| GTIN (EAN) | 4008190108267 | | |
| Qty. | 10 ST | | |
| Type | WAH 185/300 BL | Version | |
| Order No. | 1064780000 | Bolt-type screw terminals, Hood, blue, 54 mm | |
| GTIN (EAN) | 4008190103200 | | |
| Qty. | 10 ST | | |

Custom printing



WS markers are the perfect match for the W-series connectors. Thanks to their system compatibility, the WS tags can also be used with the I-series and the Z-series. The large marking surfaces do not only permit long character strings but also multi-line text. WS markers are ideal for labels with long, customised character strings. Thanks to the proven MultiCard format, printing with PrintJet CONNECT oder/or Plotter is possible.

- Can be fitted in strips or individually
- Markers in proven MultiCard format

For custom printing: Please send us a file of our labeling software M-Print PRO or M-Print PRO Online (without installation) for your labeling specifications.

General ordering data

| | | | |
|------------|----------------------------|---|--|
| Type | WS 12/6.5 MC SDR | Version | |
| Order No. | 1609930000 | WS, Terminal marker, 12 x 6.5 mm, Pitch in mm (P): 6.50 | |
| GTIN (EAN) | 4008190456665 | Weidmueller, Allen-Bradley, To customer specification | |
| Qty. | 108 ST | | |

WFF 185

Weidmüller Interface GmbH & Co. KG

Klingenbergstraße 26

D-32758 Detmold

Germany

Accessories

www.weidmueller.com

Blank



WS markers are the perfect match for the W-series connectors. Thanks to their system compatibility, the WS tags can also be used with the I-series and the Z-series. The large marking surfaces do not only permit long character strings but also multi-line text. WS markers are ideal for labels with long, customised character strings. Thanks to the proven MultiCard format, printing with PrintJet CONNECT oder/or Plotter is possible.

- Can be fitted in strips or individually
- Markers in proven MultiCard format

For custom printing: Please send us a file of our labeling software M-Print PRO or M-Print PRO Online (without installation) for your labeling specifications.

General ordering data

| | | |
|------------|----------------------------|---|
| Type | WS 12/6.5 MC NE WS | Version |
| Order No. | 1609920000 | WS, Terminal marker, 12 x 6.5 mm, Pitch in mm (P): 6.50 |
| GTIN (EAN) | 4008190203511 | Weidmueller, Allen-Bradley, white |
| Qty. | 540 ST | |
| Type | DEK 5/5 MC NE WS | Version |
| Order No. | 1609801044 | Dekafix, Terminal marker, 5 x 5 mm, Pitch in mm (P): 5.00 |
| GTIN (EAN) | 4008190397111 | Weidmueller, white |
| Qty. | 1000 ST | |

Marker holder



The marker holder offer the possibility of additional mounting of standard markers with a pitch of 5 or 5.1 mm. The angled holders can be optionally snapped together and could be mounted in all standard marking channels of the Klippon® Connect modular terminal blocks. Fitting marker types could be found under the respective accessories of the designation marking holder.

General ordering data

| | | |
|------------|----------------------------|----------------------------|
| Type | BZT 1 WS 10/5 | Version |
| Order No. | 1805490000 | Accessories, Marker holder |
| GTIN (EAN) | 4032248270231 | |
| Qty. | 100 ST | |
| Type | BZT 1 ZA WS 10/5 | Version |
| Order No. | 1805520000 | Accessories, Marker holder |
| GTIN (EAN) | 4032248270248 | |
| Qty. | 100 ST | |

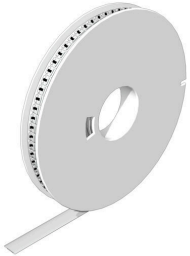
WFF 185

Weidmüller Interface GmbH & Co. KG
Klingenbergstraße 26
D-32758 Detmold
Germany

Accessories

www.weidmueller.com

WS 12/6.5



WS/ DEK

MultiMark terminal markers use an innovative composite material made from two components. The hard base contour of the marker snaps securely into the connector. The elastic surface finish makes the marker easy to mount. This specially punched material enables the strips to be stretched to accommodate the slight variations in spacing that tend to add up, especially with long terminal blocks. Another advantage: the excellent printability of the surface material guarantees durable and wear-resistant labelling. A print resolution of 300 dpi also produces a very legible script.

Your benefits with MultiMark

- Firm hold and durable printing
- Continuous strips save installation time
- Easy mounting thanks to an innovative composite material
- Large label field for optimal legibility
- High flexibility thanks to manufacturer independence

General ordering data

| | | | |
|------------|----------------------------|---------|--|
| Type | WS 12/6.5 MM WS | Version | |
| Order No. | 2619930000 | | WS, Terminal marker, 12 x 6.5 mm, Weidmueller, white |
| GTIN (EAN) | 4050118626155 | | |
| Qty. | 600 ST | | |