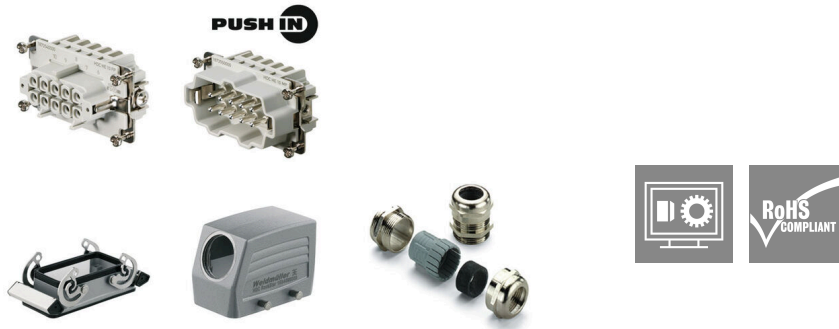


## HDC KIT HE-P 10.110

**Weidmüller Interface GmbH & Co. KG**  
 Klingenbergstraße 26  
 D-32758 Detmold  
 Germany

[www.weidmueller.com](http://www.weidmueller.com)



HDC kits are standardized kits for assembling complete plug-in connectors.

The HDC kits normally consist of a male insert, a female insert, a plug housing, a bulkhead housing and a cable gland.

Weidmüller offers a range of standard connector combinations with metric or PG cable entry threads.

The PUSH IN connection is a direct-insert method of connection. The preprocessed wire can be inserted directly into the wire connection without the need for any tools.

### General ordering data

Version	RockStar® HDC kits-Heavy-duty connectors, Kit, HE, Installation size: 4, Poles: 10, PUSH IN, 500 V, 16 A, diecast aluminium, PG 16
Order No.	<a href="#">1027680000</a>
Type	HDC KIT HE-P 10.110
GTIN (EAN)	4032248770694
Qty.	1 items

## HDC KIT HE-P 10.110

Weidmüller Interface GmbH &amp; Co. KG

Klingenbergstraße 26

D-32758 Detmold

Germany

www.weidmueller.com

## Technical data

## Approvals

Approvals



ROHS Conform

## Dimensions and weights

Net weight 488 g

## Temperatures

Limit temperature -40 °C ... 100 °C

## Environmental Product Compliance

RoHS Compliance Status Compliant with exemption

RoHS Exemption (if applicable/known) 6c

REACH SVHC Lead 7439-92-1, Potassium perfluorobutane sulfonate 29420-49-3

SCIP bfb1c983-6f18-4ba4-8907-38aad6aee076

## General data

Housing main material	diecast aluminium	Surface finish	Powder coating
Protection degree	IP65	Series	HE
EMC housings	No	Material of locking element	Stainless steel, rust-proof

## Version

Size of cable entries	PG 16	Number of cable entry on top	0
Number of cable entry sideways	1	Type of connection	PUSH IN
Design of locking system	Side-locking clamp on lower side	Installation size	4
Sealing	NBR	Colour (RAL)	RAL 7035
BG	4		

## General data

Number of poles	10	Connection type PE	Screw connection
Installation size	4	Cable gland	PG 16
Basic material	diecast aluminium	Series	HE
Rated voltage (DIN EN 61984)	500 V	Rated current (DIN EN 61984)	16 A
BG	4		

## Version

Type of connection	PUSH IN	Installation size	4
Conductor cross-section, max.	4 mm <sup>2</sup>	Conductor cross-section, min.	0.5 mm <sup>2</sup>
Surface finish	Powder coating	Basic material	diecast aluminium
BG	4		

## Classifications

ETIM 8.0	EC002943	ETIM 9.0	EC002943
ETIM 10.0	EC002943	ECLASS 14.0	27-44-02-92

Creation date 18.02.2026 06:48:44 MEZ

Catalogue status / Drawings

**HDC KIT HE-P 10.110**

**Weidmüller Interface GmbH & Co. KG**  
Klingenbergstraße 26  
D-32758 Detmold  
Germany

**Technical data**

[www.weidmueller.com](http://www.weidmueller.com)

---

ECLASS 15.0

27-44-02-92

---