

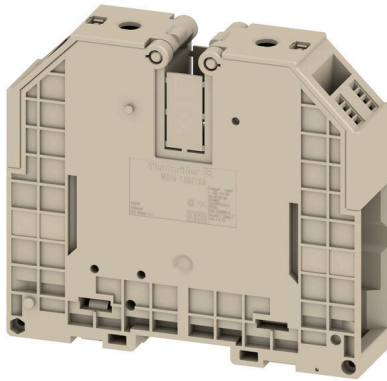
WDU 120/150**Weidmüller Interface GmbH & Co. KG**

Klingenbergstraße 26

D-32758 Detmold

Germany

www.weidmueller.com

Product image

More and more components need to be housed within a confined space, in switchgear and panels. As part of the power feed-in, connecting conductors is becoming increasingly challenging, especially for large cross-sections. Our comprehensive range of connection solutions also enables convenient wiring in challenging space conditions. The compact design and the combination of many practical handling benefits make the supply of power to switchgear and panels simple, efficient, and space-saving.

General ordering data

Version	Feed-through terminal block, Screw connection, dark beige, 120 mm ² , 269 A, 1000 V, Number of connections: 2
Order No.	1024500000
Type	WDU 120/150
GTIN (EAN)	4008190164768
Qty.	10 items

Technical data

Approvals

Approvals



ROHS	Conform
UL File Number Search	UL Website
Certificate No. (UR)	E60693
Certificate No. (cURusEX)	E184763

Dimensions and weights

Depth	117 mm	Depth (inches)	4.6063 inch
Depth including DIN rail	125.5 mm	Height	132 mm
Height (inches)	5.1968 inch	Width	32 mm
Width (inches)	1.2598 inch	Net weight	508.82 g

Temperatures

Storage temperature	-25 °C...55 °C	Ambient temperature	-60 °C...85 °C
Continuous operating temp., min.	-60 °C	Continuous operating temp., max.	130 °C

Environmental Product Compliance

RoHS Compliance Status	Compliant without exemption		
REACH SVHC	No SVHC above 0.1 wt%		
Product Carbon Footprint	Cradle to gate	3,799 kg CO2 eq.	

Material data

Basic material	Wemid	Colour	dark beige
UL 94 flammability rating	V-0		

Rating data IECEX/ATEX

Certificate No. (ATEX)	DEMKO14ATEX1338U	Certificate No. (IECEX)	IECEXULD14.0005U
Max. voltage (ATEX)	1100 V	Current (ATEX)	265 A
Wire cross section max. (ATEX)	150 mm ²	Max. voltage (IECEX)	1100 V
Current (IECEX)	265 A	Wire cross section max. (IECEX)	150 mm ²
Marking EN 60079-7	Ex eb II C Gb	Ex 2014/34/EU label	II 2 G D

System specifications

Version	Screw connection, for screwable cross-connection, in closed state	End cover plate required	No
Number of potentials	1	Number of levels	1

WDU 120/150

Weidmüller Interface GmbH & Co. KG
 Klingenbergstraße 26
 D-32758 Detmold
 Germany

www.weidmueller.com

Technical data

Number of clamping points per level	2	Number of potentials per tier	1
Levels cross-connected internally	No	PE connection	No
Mounting rail	TS 35	N-function	No
PE function	No	PEN function	Yes

2 clampable conductors (H05V/H07V) with equal cross-section (rated connection)

Wire connection cross section, finely stranded with wire-end ferrules DIN 46228/1, 2 clampable wires, max.	70 mm ²	Wire connection cross section, finely stranded with wire-end ferrules DIN 46228/1, 2 clampable wires, min.	35 mm ²
Wire cross-section, finely stranded, two clampable wires, max.	70 mm ²	Wire connection cross section, finely stranded, two clampable wires, min.	35 mm ²
Cross-section for connected wire, stranded, two clampable wires, max.	70 mm ²	Cross-section for connected wire, stranded, two clampable wires, min.	35 mm ²

Additional technical data

Open sides	closed	Number of similar terminals	1
Installation advice	Direct mounting	Explosion-tested version	Yes
Type of mounting	Snap-on		

CSA rating data

Wire cross section max. (CSA)	250 AWG	Voltage size C (CSA)	600 V
Current size C (CSA)	285 A	Certificate No. (CSA)	12400-241
Wire cross section min. (CSA)	2 AWG		

Conductors for clamping (additional connection)

Connection type, additional connection Screw connection

Conductors for clamping (rated connection)

Gauge to IEC 60947-1	B13
Wire connection cross section AWG, max.	kcmil 250
Connection direction	on side
Tightening torque, max.	20 Nm
Tightening torque, min.	10 Nm
Stripping length	35 mm
Type of connection	Screw connection
Number of connections	2
Clamping range, max.	150 mm ²
Clamping range, min.	33.63 mm ²
Clamping screw	M 10
Blade size	S6 (DIN 6911)
Wire connection cross section AWG, min.	AWG 2
Wire connection cross-section, finely stranded with wire-end ferrules DIN 46228/4, max.	150 mm ²
Wire connection cross-section, finely stranded with wire-end ferrules DIN 46228/4, min.	35 mm ²
Wire connection cross-section, finely stranded with wire-end ferrules DIN 46228/1, max.	150 mm ²
Wire connection cross-section, finely stranded with wire-end ferrules DIN 46228/1, min.	35 mm ²

WDU 120/150

Weidmüller Interface GmbH & Co. KG

Klingenbergstraße 26

D-32758 Detmold

Germany

www.weidmueller.com

Technical data

Wire connection cross section, finely stranded, max.	150 mm ²			
Wire connection cross section, finely stranded, min.	35 mm ²			
Connection cross-section, stranded, max.	150 mm ²			
Connection cross-section, stranded, min.	35 mm ²			
Wire connection cross-section, solid core, max.	150 mm ²			
Wire connection cross-section, solid core, min.	35 mm ²			
Clampable conductor	Connection specification		Screw connection	
	Cross-section for conductor connection	Type	stranded, H07V-R	
		min.	35 mm ²	
		max.	150 mm ²	
	wire end ferrule	Stripping length	min.	35 mm
			max.	35 mm
			nominal	35 mm
	Tightening torque	min.	10 Nm	
		max.	20 Nm	
		Connection specification		Screw connection
	Cross-section for conductor connection	Type	flexible, H05(07) V-K	
		min.	35 mm ²	
max.		150 mm ²		
wire end ferrule	Stripping length	min.	35 mm	
		max.	35 mm	
		nominal	35 mm	
Tightening torque	min.	10 Nm		
	max.	20 Nm		

General

Wire connection cross section AWG, max.	kcmil 250	Installation advice	Direct mounting
Wire connection cross section AWG, min.	AWG 2	Standards	IEC 60947-7-1
Mounting rail	TS 35		

Rating data

Rated cross-section	120 mm ²	Rated voltage	1000 V
Rated DC voltage	1000 V	Nominal current	269 A
Current at maximum wires	309 A	Standards	IEC 60947-7-1
Volume resistance according to IEC 60947-7-x	0.12 mΩ	Rated impulse withstand voltage	8 kV
Power loss in accordance with IEC 60947-7-x	8.61 W	Pollution severity	3

UL rating data

Conductor size Factory wiring max. (UR)	250 kcmil	Current size C (UR)	225 A
Voltage size C (UR)	1000 V	Conductor size Factory wiring min. (UR)	2 AWG
Certificate No. (UR)	E60693	Conductor size Field wiring min. (UR)	2 AWG
Conductor size Field wiring max. (UR)	250 kcmil		

Technical data

Classifications

ETIM 8.0	EC000897	ETIM 9.0	EC000897
ETIM 10.0	EC000897	ECLASS 14.0	27-25-01-01
ECLASS 15.0	27-25-01-01		

Drawings

