

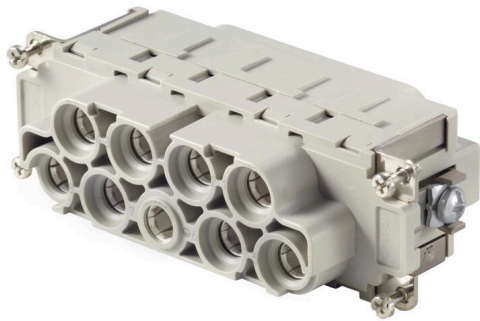
**HDC S8/0 FAS****Weidmüller Interface GmbH & Co. KG**

Klingenbergstraße 26

D-32758 Detmold

Germany

www.weidmueller.com



The MixMate series of connectors can simultaneously transmit high rated currents and voltages as well as signals. An axial screw can be used to secure the wire.  
Axial screw connection / TOP connection

**General ordering data**

Version	HDC insert, Female, 690 V, 110 A, Number of poles: 8, Axial screw connection, Installation size: 8
Order No.	<a href="#">1023350000</a>
Type	HDC S8/0 FAS
GTIN (EAN)	4032248739493
Qty.	1 items

Technical data

Approvals

Approvals



ROHS	Conform
UL File Number Search	<a href="#">UL Website</a>
Certificate No. (cURus)	E92202

Dimensions and weights

Depth	111 mm	Depth (inches)	4.3701 inch
Height	52.4 mm	Height (inches)	2.063 inch
Width	34 mm	Width (inches)	1.3386 inch
Net weight	271.04 g		

Temperatures

Limit temperature	-40 °C ... 125 °C
-------------------	-------------------

Environmental Product Compliance

RoHS Compliance Status	Compliant with exemption
RoHS Exemption (if applicable/known)	6c
REACH SVHC	Lead 7439-92-1, Potassium perfluorobutane sulfonate 29420-49-3
SCIP	b67daa31-7dca-434d-8290-da7fb52f83a2

Chemical resistance	Substance	Acetone
	Chemical resistance	Resistant
	Substance	Ammonia, watery
	Chemical resistance	Conditionally resistant
	Substance	Petrol
	Chemical resistance	Resistant
	Substance	Benzene
	Chemical resistance	Resistant
	Substance	Diesel oil
	Chemical resistance	Conditionally resistant
	Substance	Acetic acid, concentrated
	Chemical resistance	Resistant
	Substance	Potassium hydroxide
	Chemical resistance	Conditionally resistant
	Substance	Methanol
	Chemical resistance	Conditionally resistant
	Substance	Motor oil
	Chemical resistance	Conditionally resistant
	Substance	Lye, diluted
	Chemical resistance	Resistant
Substance	Hydrochlorofluorocarbons	
Chemical resistance	Conditionally resistant	
Substance	Outdoor use	
Chemical resistance	Conditionally resistant	

Dimensions

Width	34 mm	Total length base	111 mm
Height of socket	52.4 mm		

## HDC S8/0 FAS

**Weidmüller Interface GmbH & Co. KG**

Klingenbergstraße 26  
D-32758 Detmold  
Germany

www.weidmueller.com

## Technical data

### General data

Number of poles	8	
Plugging cycles, silver	≥ 500	
Plugging cycles, gold	≥ 500	
Type of connection	Axial screw connection	
Installation size	8	
UL 94 flammability rating	V-0	
Volume resistance	≤ 1 mΩ	
Colour	beige	
Insulation resistance	1010 Ω	
Insulating material	PC glass-fibre reinforced (UL-listed and railway-certified)	
Insulating material group	IIIa	
Conductor cross-section	25 mm <sup>2</sup>	
Surface finish	Silver passivated	
Type	Female	
Pollution severity	3	
Basic material	Copper alloy	
Series	MixMate	
Rated voltage (DIN EN 61984)	690 V	
Rated voltage according to UL/CSA	600 V AC/DC	
Rated impulse voltage (DIN EN 61984)	8 kV	
Rated current (DIN EN 61984)	110 A	
Rated current (UR)	Wire connection cross section AWG	AWG 8
	Rated current	50 A
	Wire connection cross section AWG	AWG 6
	Rated current	65 A
	Wire connection cross section AWG	AWG 4
	Rated current	85 A
Rated current (cUR)	Wire connection cross section AWG	AWG 8
	Rated current	44 A
	Wire connection cross section AWG	AWG 6
	Rated current	56 A
	Wire connection cross section AWG	AWG 4
	Rated current	66 A
Free from halogens	true	
	Low smoke acc. DIN EN 45545-2	
BG	8	
Number of power contacts	8	

### Connection data PE

Connection type PE	Screw connection, Miscellaneous	Stripping length PE connection	12 mm
Tightening torque, max. PE connection	7 Nm	Tightening torque, min. PE connection	6 Nm
Rated cross-section	25 mm <sup>2</sup>	Wire cross section, AWG (PE), min.	AWG 8
Wire cross section, AWG (PE), max.	AWG 4		

### Power contact

Type of connection, power contact	Axial screw connection	Number of poles, performance contact	8
Stripping length, performance contact	12 mm	Clamping range, power contact, max.	25 mm <sup>2</sup>
Clamping range, power contact, min.	10 mm <sup>2</sup>	Rated voltage (DIN EN 61984), power contact	690 V
Rated impulse voltage (DIN EN 61984), power contact	8 kV	Rated current (DIN EN 61984), power contact	110 A

### Technical data

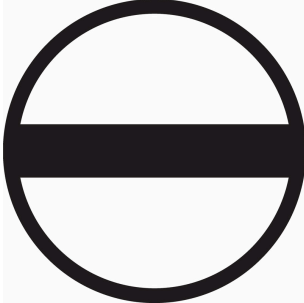
Hexagon socket 4 mm

#### Version

Wire connection cross section AWG, max.	AWG 4	Stripping length, rated connection	12 mm
Type of connection	Axial screw connection	Installation size	8
Volume resistance	≤1 mΩ	Clamping screw	M 8 x 0.75 mm
Wire connection cross section AWG, min.	AWG 8	Wire connection cross section, finely stranded, max.	25 mm <sup>2</sup>
Wire connection cross section, finely stranded, min.	10 mm <sup>2</sup>	Conductor cross-section, max.	25 mm <sup>2</sup>
Conductor cross-section, min.	10 mm <sup>2</sup>	Surface finish	Silver passivated
Basic material	Copper alloy	BG	8

#### Classifications

ETIM 8.0	EC000438	ETIM 9.0	EC000438
ETIM 10.0	EC000438	ECLASS 14.0	27-44-02-05
ECLASS 15.0	27-44-02-05		

**Accessories****Slotted screwdriver**

VDE insulated slot-head screwdriver, SDI DIN 7437, ISO 2380/2, drive output acc. to DIN 5264, ISO 2380/1.  
SoftFinish grip

**General ordering data**

Type	SDIS 0.6X3.5X100	Version	
Order No.	<a href="#">9008390000</a>	Screwdriver, Screwdriver	
GTIN (EAN)	4032248056354		
Qty.	1 ST		
Type	SDS 0.6X3.5X100	Version	
Order No.	<a href="#">9008330000</a>	Screwdriver, Screwdriver	
GTIN (EAN)	4032248056286		
Qty.	1 ST		