

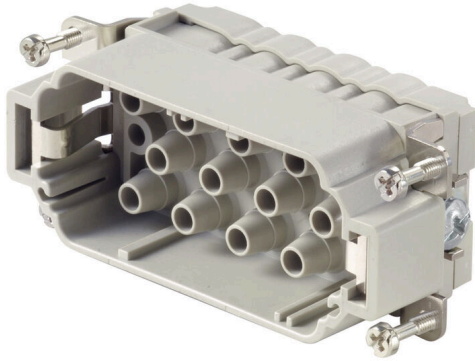
HDC S12/2 MC**Weidmüller Interface GmbH & Co. KG**

Klingenbergstraße 26

D-32758 Detmold

Germany

www.weidmueller.com



The MixMate series of connectors can simultaneously transmit high rated currents and voltages as well as signals.

The wire connection level is designed as a crimp contact.

The established crimp connection has been used as a standard for decades.

Crimp contacts are not delivered with the inserts.

Crimp connection

General ordering data

Version	HDC insert, Male, 690 V, 40 A, Number of poles: 14, Crimp connection, Installation size: 6
Order No.	1023340000
Type	HDC S12/2 MC
GTIN (EAN)	4032248739486
Qty.	1 items

HDC S12/2 MC

Weidmüller Interface GmbH & Co. KG
 Klingenbergstraße 26
 D-32758 Detmold
 Germany

www.weidmueller.com

Technical data

Approvals

Approvals



ROHS	Conform
UL File Number Search	UL Website
Certificate No. (cURus)	E92202

Dimensions and weights

Depth	84.5 mm	Depth (inches)	3.3268 inch
Height	38.6 mm	Height (inches)	1.5197 inch
Width	34 mm	Width (inches)	1.3386 inch
Net weight	62 g		

Temperatures

Limit temperature	-40 °C ... 125 °C
-------------------	-------------------

Environmental Product Compliance

RoHS Compliance Status	Compliant without exemption
REACH SVHC	Potassium perfluorobutane sulfonate 29420-49-3
SCIP	1609748e-c278-4c9b-b3d1-e6215d2988cd

Chemical resistance	Substance	Acetone
	Chemical resistance	Resistant
	Substance	Ammonia, watery
	Chemical resistance	Conditionally resistant
	Substance	Petrol
	Chemical resistance	Resistant
	Substance	Benzene
	Chemical resistance	Resistant
	Substance	Diesel oil
	Chemical resistance	Conditionally resistant
	Substance	Acetic acid, concentrated
	Chemical resistance	Resistant
	Substance	Potassium hydroxide
	Chemical resistance	Conditionally resistant
	Substance	Methanol
	Chemical resistance	Conditionally resistant
	Substance	Motor oil
	Chemical resistance	Conditionally resistant
	Substance	Lye, diluted
	Chemical resistance	Resistant
Substance	Hydrochlorofluorocarbons	
Chemical resistance	Conditionally resistant	
Substance	Outdoor use	
Chemical resistance	Conditionally resistant	

Dimensions

Width	34 mm	Total length base	84.5 mm
Height of plug	38.6 mm		

HDC S12/2 MC

Weidmüller Interface GmbH & Co. KG

Klingenbergstraße 26

D-32758 Detmold

Germany

www.weidmueller.com

Technical data

General data

Number of poles	14	Tightening torque	0.5 Nm
Plugging cycles, silver	≥ 500	Plugging cycles, gold	≥ 500
Type of connection	Crimp connection	Installation size	6
UL 94 flammability rating	V-0	Volume resistance	≤2 mΩ
Colour	beige	Insulation resistance	1010 Ω
Insulating material	PC glass-fibre reinforced (UL-listed and railway-certified)	Insulating material group	IIIa
Tightening torque, max. PE connection	2.5 Nm	Type	Male
Pollution severity	3	Tightening torque, min. PE connection	2 Nm
Basic material	Copper alloy	Series	MixMate
Rated voltage (DIN EN 61984)	690 V	Rated voltage according to UL/CSA	600 V AC/DC
Rated impulse voltage (DIN EN 61984)	8 kV	Rated current (DIN EN 61984)	40 A
Free from halogens	true	Low smoke acc. DIN EN 45545-2	Yes
BG	6	Number of signal contacts	2
Signal contact, type	HD	Number of power contacts	12
Power contact, type	HX		

Connection data PE

Connection type PE	Screw connection	Blade size, slotted (PE connection)	SD 1.2 x 6.5
Stripping length PE connection	13 mm	Tightening torque, max. PE connection	2.5 Nm
Tightening torque, min. PE connection	2 Nm	Fixing screw	M 5
Rated cross-section	6 mm ²	Wire cross section, AWG (PE), min.	AWG 20
Wire cross section, AWG (PE), max.	AWG 10		

Power contact

Type of connection, power contact	Crimp connection		
Number of poles, performance contact	12		
Stripping length, performance contact	9 mm		
Clamping range, power contact, max.	6 mm ²		
Clamping range, power contact, min.	1.5 mm ²		
Rated voltage (DIN EN 61984), power contact	690 V		
Rated impulse voltage (DIN EN 61984), power contact	8 kV		
Rated current (DIN EN 61984), power contact	40 A		
Rated current power circuit (UR)	Wire connection cross section AWG	AWG 10	
	Rated current	40 A	
	Wire connection cross section AWG	AWG 12	
	Rated current	20 A	
	Wire connection cross section AWG	AWG 14	
	Rated current	15 A	
Rated current signal circuit (UR)	Wire connection cross section AWG	AWG 16	
	Rated current	10 A	
	Wire connection cross section AWG	AWG 14	
	Rated current	10 A	
	Wire connection cross section AWG	AWG 16	
	Rated current	8 A	
	Wire connection cross section AWG	AWG 18	
	Rated current	7 A	
	Wire connection cross section AWG	AWG 20	
	Rated current	5 A	
	Wire connection cross section AWG	AWG 22	
	Rated current	5 A	

Technical data

Rated current signal circuit (cUR)	Rated current	3 A
	Wire connection cross section AWG	AWG 14
	Rated current	10 A
	Wire connection cross section AWG	AWG 16
	Rated current	8 A
	Wire connection cross section AWG	AWG 18
	Rated current	7 A
	Wire connection cross section AWG	AWG 20
	Rated current	5 A
	Wire connection cross section AWG	AWG 22
Rated current power circuit (cUR)	Rated current	3 A
	Wire connection cross section AWG	AWG 10
	Rated current	24 A
	Wire connection cross section AWG	AWG 12
	Rated current	19 A
	Wire connection cross section AWG	AWG 14
	Rated current	14 A
	Wire connection cross section AWG	AWG 16
Rated current	10 A	

Signal contact

Type of connection, signal	Crimp connection	
Number of poles, signal	2	
Clamping range, signal contact, max.	2.5 mm ²	
Clamping range, signal contact, min.	0.5 mm ²	
Stripping length, signal	8 mm	
Rated voltage (DIN EN 61984), signal contact	250 V	
Rated impulse voltage (DIN EN 61984), signal	4 kV	
Rated current (DIN EN 61984), signal	10 A	
Rated current power circuit (UR)	Wire connection cross section AWG	AWG 10
	Rated current	40 A
	Wire connection cross section AWG	AWG 12
	Rated current	20 A
	Wire connection cross section AWG	AWG 14
	Rated current	15 A
	Wire connection cross section AWG	AWG 16
	Rated current	10 A
Rated current signal circuit (UR)	Wire connection cross section AWG	AWG 14
	Rated current	10 A
	Wire connection cross section AWG	AWG 16
	Rated current	8 A
	Wire connection cross section AWG	AWG 18
	Rated current	7 A
	Wire connection cross section AWG	AWG 20
	Rated current	5 A
	Wire connection cross section AWG	AWG 22
	Rated current	3 A
Rated current signal circuit (cUR)	Wire connection cross section AWG	AWG 14
	Rated current	10 A
	Wire connection cross section AWG	AWG 16
	Rated current	8 A
	Wire connection cross section AWG	AWG 18
	Rated current	7 A
	Wire connection cross section AWG	AWG 20
	Rated current	5 A

Technical data

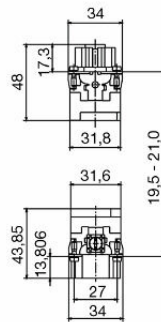
Rated current power circuit (cUR)	Wire connection cross section AWG	AWG 22
	Rated current	3 A
	Wire connection cross section AWG	AWG 10
	Rated current	24 A
	Wire connection cross section AWG	AWG 12
	Rated current	19 A
	Wire connection cross section AWG	AWG 14
	Rated current	14 A
	Wire connection cross section AWG	AWG 16
	Rated current	10 A

Version

Wire connection cross section AWG, max.	AWG 10	Stripping length, rated connection	9 mm
Type of connection	Crimp connection	Installation size	6
Volume resistance	≤2 mΩ	Wire connection cross section AWG, min.	AWG 16
Wire cross-section, solid, max.	6 mm ²	Wire cross-section, solid, min.	0.5 mm ²
Wire connection cross-section, finely stranded with wire-end ferrules DIN 46228/4, max.	6 mm ²	Wire connection cross-section, finely stranded with wire-end ferrules DIN 46228/4, min.	0.5 mm ²
Wire connection cross section, finely stranded, max.	6 mm ²	Wire connection cross section, finely stranded, min.	0.5 mm ²
Conductor cross-section, max.	6 mm ²	Conductor cross-section, min.	1.5 mm ²
Basic material	Copper alloy	BG	6

Classifications

ETIM 8.0	EC000438	ETIM 9.0	EC000438
ETIM 10.0	EC000438	ECLASS 14.0	27-44-02-05
ECLASS 15.0	27-44-02-05		



HDC S12/2 MC

Weidmüller Interface GmbH & Co. KG

Klingenbergstraße 26

D-32758 Detmold

Germany

www.weidmueller.com

Accessories

Slotted screwdriver



VDE insulated slot-head screwdriver, SDI DIN 7437, ISO 2380/2, drive output acc. to DIN 5264, ISO 2380/1. SoftFinish grip

General ordering data

Type	SDIS 1.2X6.5X150	Version	
Order No.	9008420000	Screwdriver, Screwdriver	
GTIN (EAN)	4032248056385		
Qty.	1 ST		
Type	SDS 1.2X6.5X150	Version	
Order No.	9009010000	Screwdriver, Screwdriver	
GTIN (EAN)	4032248266869		
Qty.	1 ST		

Crosshead screwdriver Phillips



VDE insulated crosshead screwdriver, for Phillips screws, SDIK PH DIN 7438, ISO 8764/2-PH, output to ISO 8764-PH, SoftFinish grip

General ordering data

Type	SDIK PH2	Version	
Order No.	9008580000	Screwdriver, Screwdriver	
GTIN (EAN)	4032248056576		
Qty.	1 ST		
Type	SDK PH2	Version	
Order No.	9008490000	Screwdriver, Screwdriver	
GTIN (EAN)	4032248056484		
Qty.	1 ST		

HDC S12/2 MC

Weidmüller Interface GmbH & Co. KG
 Klingenbergstraße 26
 D-32758 Detmold
 Germany

www.weidmueller.com

Accessories

Slotted screwdriver



VDE insulated slot-head screwdriver, SDI DIN 7437, ISO 2380/2, drive output acc. to DIN 5264, ISO 2380/1. SoftFinish grip

General ordering data

Type	SDIS 0.6X3.5X100	Version	
Order No.	9008390000	Screwdriver, Screwdriver	
GTIN (EAN)	4032248056354		
Qty.	1 ST		
Type	SDS 0.6X3.5X100	Version	
Order No.	9008330000	Screwdriver, Screwdriver	
GTIN (EAN)	4032248056286		
Qty.	1 ST		

Crimping tools



Crimping tools for turned contacts

- Ratchet guarantees precise crimping
- Release option in the event of incorrect operation
- With stop for exact positioning of the contacts.

General ordering data

Type	CTIN CM 1.6/2.5	Version	
Order No.	9205430000	Pressing tool, Crimping tool for contacts, 0.14mm ² , 6mm ² , 4-indent	
GTIN (EAN)	4032248733446	crimp	
Qty.	1 ST		

Contact removal tools



Weidmüller offers a variety of crimping tools, contact removal tools, and fibre optic tools.

HDC S12/2 MC

Weidmüller Interface GmbH & Co. KG
 Klingenbergstraße 26
 D-32758 Detmold
 Germany

www.weidmueller.com

Accessories

General ordering data

Type	REMOVAL TOOL HD	Version	
Order No.	1866730000	Tools, Contact Removal Tool	
GTIN (EAN)	4032248437054		
Qty.	1 ST		

Crimp contacts HX



Crimps provide a electrical and mechanical connection between wire and contact that is both secure and reliable. The optimal crimp connection is gas-tight and corrosion-resistant.

General ordering data

Type	HDC C HX SM1.5AG	Version	
Order No.	1002910000	Heavy-duty connectors, Crimp contact, MixMate, Male, Conductor	
GTIN (EAN)	4032248697090	cross-section, max.: 1.5, turned, Copper alloy	
Qty.	25 ST		
Type	HDC C HX SM2.5AG	Version	
Order No.	1002920000	Heavy-duty connectors, Crimp contact, MixMate, Male, Conductor	
GTIN (EAN)	4032248697106	cross-section, max.: 2.5, turned, Copper alloy	
Qty.	25 ST		
Type	HDC C HX SM4.0AG	Version	
Order No.	1002930000	Heavy-duty connectors, Crimp contact, MixMate, Male, Conductor	
GTIN (EAN)	4032248697212	cross-section, max.: 4, turned, Copper alloy	
Qty.	25 ST		
Type	HDC C HX SM6.0AG	Version	
Order No.	1002940000	Heavy-duty connectors, Crimp contact, MixMate, Male, Conductor	
GTIN (EAN)	4032248697229	cross-section, max.: 6, turned, Copper alloy	
Qty.	25 ST		

Crimp contacts HD



Crimps provide a electrical and mechanical connection between wire and contact that is both secure and reliable. The optimal crimp connection is gas-tight and corrosion-resistant.

General ordering data

Type	HDC-C-HD-SM0.14-0.37AG	Version	
Order No.	1651520000	Heavy-duty connectors, Crimp contact, HD, HDD, HQ, MixMate, Male,	
GTIN (EAN)	4008190400194	Conductor cross-section, max.: 0.37, turned, Copper alloy	
Qty.	100 ST		

HDC S12/2 MC

Weidmüller Interface GmbH & Co. KG
 Klingenbergstraße 26
 D-32758 Detmold
 Germany

www.weidmueller.com

Accessories

Type	HDC-C-HD-SM0.5AG	Version
Order No.	1651530000	Heavy-duty connectors, Crimp contact, HD, HDD, HQ, MixMate, Male,
GTIN (EAN)	4008190400200	Conductor cross-section, max.: 0.5, turned, Copper alloy
Qty.	100 ST	
Type	HDC-C-HD-SM0.75-1.00AG	Version
Order No.	1601750000	Heavy-duty connectors, Crimp contact, HD, HDD, HQ, MixMate, Male,
GTIN (EAN)	4008190134280	Conductor cross-section, max.: 1, turned, Copper alloy
Qty.	100 ST	
Type	HDC-C-HD-SM1.5AG	Version
Order No.	1651550000	Heavy-duty connectors, Crimp contact, HD, HDD, HQ, MixMate, Male,
GTIN (EAN)	4008190400224	Conductor cross-section, max.: 1.5, turned, Copper alloy
Qty.	100 ST	
Type	HDC-C-HD-SM2.5AG	Version
Order No.	1651560000	Heavy-duty connectors, Crimp contact, HD, HDD, HQ, MixMate, Male,
GTIN (EAN)	4008190400231	Conductor cross-section, max.: 2.5, turned, Copper alloy
Qty.	100 ST	
Type	HDC-C-HD-SM0.14-0.37AU	Version
Order No.	1651620000	Heavy-duty connectors, Crimp contact, HD, HDD, HQ, MixMate, Male,
GTIN (EAN)	4008190400293	Conductor cross-section, max.: 0.37, turned, Copper alloy
Qty.	100 ST	
Type	HDC-C-HD-SM0.5AU	Version
Order No.	1651630000	Heavy-duty connectors, Crimp contact, HD, HDD, HQ, MixMate, Male,
GTIN (EAN)	4008190400309	Conductor cross-section, max.: 0.5, turned, Copper alloy
Qty.	100 ST	
Type	HDC-C-HD-SM0.75-1.00AU	Version
Order No.	1651640000	Heavy-duty connectors, Crimp contact, HD, HDD, HQ, MixMate, Male,
GTIN (EAN)	4008190400316	Conductor cross-section, max.: 1, turned, Copper alloy
Qty.	100 ST	
Type	HDC-C-HD-SM1.5AU	Version
Order No.	1651650000	Heavy-duty connectors, Crimp contact, HD, HDD, HQ, MixMate, Male,
GTIN (EAN)	4008190400323	Conductor cross-section, max.: 1.5, turned, Copper alloy
Qty.	100 ST	
Type	HDC-C-HD-SM2.5AU	Version
Order No.	1651660000	Heavy-duty connectors, Crimp contact, HD, HDD, HQ, MixMate, Male,
GTIN (EAN)	4008190400330	Conductor cross-section, max.: 2.5, turned, Copper alloy
Qty.	100 ST	