

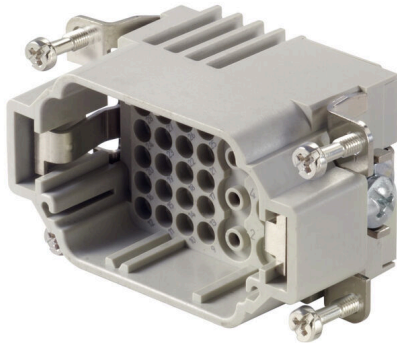
**HDC S8/24 MC****Weidmüller Interface GmbH & Co. KG**

Klingenbergstraße 26

D-32758 Detmold

Germany

www.weidmueller.com



The MixMate series of connectors can simultaneously transmit high rated currents and voltages as well as signals.

The wire connection level is designed as a crimp contact.

The established crimp connection has been used as a standard for decades.

Crimp contacts are not delivered with the inserts.

Crimp connection

**General ordering data**

|            |  |
|------------|--|
| Version    | HDC insert, Male, 400 V, 16 A, Number of poles: 32, Crimp connection, Installation size: 4 |
| Order No.  | <a href="#">1023290000</a>   |
| Type       | HDC S8/24 MC   |
| GTIN (EAN) | 4032248739448  |
| Qty.       | 1 items  |

**HDC S8/24 MC**

**Weidmüller Interface GmbH & Co. KG**  
 Klingenbergstraße 26  
 D-32758 Detmold  
 Germany

www.weidmueller.com

**Technical data**

**Approvals**

Approvals



|                         |                            |
|-------------------------|----------------------------|
| ROHS                    | Conform                    |
| UL File Number Search   | <a href="#">UL Website</a> |
| Certificate No. (cURus) | E92202                     |

**Dimensions and weights**

|            |         |                 |             |
|------------|---------|-----------------|-------------|
| Depth      | 64 mm   | Depth (inches)  | 2.5197 inch |
| Height     | 35.3 mm | Height (inches) | 1.3898 inch |
| Width      | 34 mm   | Width (inches)  | 1.3386 inch |
| Net weight | 48 g    |                 |             |

**Temperatures**

|                   |                   |
|-------------------|-------------------|
| Limit temperature | -40 °C ... 125 °C |
|-------------------|-------------------|

**Environmental Product Compliance**

|                        |  |
|------------------------|--|
| RoHS Compliance Status | Compliant without exemption                    |
| REACH SVHC             | Potassium perfluorobutane sulfonate 29420-49-3 |
| SCIP                   | 1609748e-c278-4c9b-b3d1-e6215d2988cd           |

|                     |                          |                           |
|---------------------|--------------------------|---------------------------|
| Chemical resistance | Substance                | Acetone                   |
|                     | Chemical resistance      | Resistant                 |
|                     | Substance                | Ammonia, watery           |
|                     | Chemical resistance      | Conditionally resistant   |
|                     | Substance                | Petrol                    |
|                     | Chemical resistance      | Resistant                 |
|                     | Substance                | Benzene                   |
|                     | Chemical resistance      | Resistant                 |
|                     | Substance                | Diesel oil                |
|                     | Chemical resistance      | Conditionally resistant   |
|                     | Substance                | Acetic acid, concentrated |
|                     | Chemical resistance      | Resistant                 |
|                     | Substance                | Potassium hydroxide       |
|                     | Chemical resistance      | Conditionally resistant   |
|                     | Substance                | Methanol                  |
|                     | Chemical resistance      | Conditionally resistant   |
|                     | Substance                | Motor oil                 |
|                     | Chemical resistance      | Conditionally resistant   |
|                     | Substance                | Lye, diluted              |
|                     | Chemical resistance      | Resistant                 |
| Substance           | Hydrochlorofluorocarbons |                           |
| Chemical resistance | Conditionally resistant  |                           |
| Substance           | Outdoor use              |                           |
| Chemical resistance | Conditionally resistant  |                           |

**Dimensions**

|                |         |                   |       |
|----------------|---------|-------------------|-------|
| Width          | 34 mm   | Total length base | 64 mm |
| Height of plug | 35.3 mm |                   |       |

## HDC S8/24 MC

Weidmüller Interface GmbH &amp; Co. KG

Klingenbergstraße 26

D-32758 Detmold

Germany

www.weidmueller.com

## Technical data

## General data

|                                   |             |                                      |   |
|-----------------------------------|-------------|--------------------------------------|---|
| Number of poles                   | 32          | Plugging cycles, silver              | ≥ 500   |
| Plugging cycles, gold             | ≥ 500       | Type of connection                   | Crimp connection  |
| Installation size                 | 4           | UL 94 flammability rating            | V-0   |
| Volume resistance                 | ≤2 mΩ       | Colour                               | beige   |
| Insulation resistance             | 1010 Ω      | Insulating material                  | PC glass-fibre reinforced (UL-listed and railway-certified) |
| Insulating material group         | IIIa        | Type                                 | Male  |
| Pollution severity                | 3           | Basic material                       | Copper alloy  |
| Series                            | MixMate     | Rated voltage (DIN EN 61984)         | 400 V   |
| Rated voltage according to UL/CSA | 600 V AC/DC | Rated impulse voltage (DIN EN 61984) | 4 kV  |
| Rated current (DIN EN 61984)      | 16 A        | Free from halogens                   | true  |
| Low smoke acc. DIN EN 45545-2     | Yes         | BG                                   | 4   |
| Number of signal contacts         | 24          | Signal contact, type                 | HD  |
| Number of power contacts          | 8           | Power contact, type                  | HE  |

## Connection data PE

|                                       |                   |                                       |              |
|---------------------------------------|-------------------|---------------------------------------|--------------|
| Connection type PE                    | Screw connection  | Blade size, slotted (PE connection)   | SD 1.2 x 6.5 |
| Stripping length PE connection        | 13 mm             | Tightening torque, max. PE connection | 2.5 Nm       |
| Tightening torque, min. PE connection | 2 Nm              | Fixing screw                          | M 5          |
| Rated cross-section                   | 6 mm <sup>2</sup> | Wire cross section, AWG (PE), min.    | AWG 20       |
| Wire cross section, AWG (PE), max.    | AWG 10            |                                       |              |

## Power contact

|   |                                   |                                   |        |
|---|-----------------------------------|-----------------------------------|--------|
| Type of connection, power contact                   | Crimp connection                  |                                   |        |
| Number of poles, performance contact                | 8                                 |                                   |        |
| Stripping length, performance contact               | 7.5 mm                            |                                   |        |
| Clamping range, power contact, max.                 | 4 mm <sup>2</sup>                 |                                   |        |
| Clamping range, power contact, min.                 | 0.5 mm <sup>2</sup>               |                                   |        |
| Rated voltage (DIN EN 61984), power contact         | 400 V                             |                                   |        |
| Rated impulse voltage (DIN EN 61984), power contact | 4 kV                              |                                   |        |
| Rated current (DIN EN 61984), power contact         | 16 A                              |                                   |        |
| Rated current power circuit (UR)                    | Wire connection cross section AWG | AWG 12                            |        |
|   | Rated current                     | 16 A                              |        |
|   | Wire connection cross section AWG | AWG 14                            |        |
|   | Rated current                     | 13 A                              |        |
|   | Wire connection cross section AWG | AWG 16                            |        |
|   | Rated current                     | 10 A                              |        |
| Rated current power circuit (UR)                    | Wire connection cross section AWG | AWG 18                            |        |
|   | Rated current                     | 7 A                               |        |
|   | Wire connection cross section AWG | AWG 20                            |        |
|   | Rated current                     | 5 A                               |        |
|   | Rated current signal circuit (UR) | Wire connection cross section AWG | AWG 14 |
|   |                                   | Rated current                     | 10 A   |
| Wire connection cross section AWG                   |                                   | AWG 16                            |        |
| Rated current                                       |                                   | 8 A                               |        |
| Wire connection cross section AWG                   |                                   | AWG 18                            |        |
| Rated current                                       |                                   | 7 A                               |        |
| Rated current signal circuit (UR)                   | Wire connection cross section AWG | AWG 20                            |        |
|   | Rated current                     | 5 A                               |        |
|   | Wire connection cross section AWG | AWG 22                            |        |
|   | Rated current                     | 5 A                               |        |

**Technical data**

|                                    |                                   |        |
|------------------------------------|-----------------------------------|--------|
| Rated current signal circuit (cUR) | Rated current                     | 3 A    |
|                                    | Wire connection cross section AWG | AWG 14 |
|                                    | Rated current                     | 8 A    |
|                                    | Wire connection cross section AWG | AWG 16 |
|                                    | Rated current                     | 8 A    |
|                                    | Wire connection cross section AWG | AWG 18 |
|                                    | Rated current                     | 7 A    |
|                                    | Wire connection cross section AWG | AWG 20 |
|                                    | Rated current                     | 5 A    |
|                                    | Wire connection cross section AWG | AWG 22 |
| Rated current power circuit (cUR)  | Rated current                     | 3 A    |
|                                    | Wire connection cross section AWG | AWG 12 |
|                                    | Rated current                     | 14 A   |
|                                    | Wire connection cross section AWG | AWG 14 |
|                                    | Rated current                     | 10 A   |
|                                    | Wire connection cross section AWG | AWG 16 |
|                                    | Rated current                     | 8.5 A  |
|                                    | Wire connection cross section AWG | AWG 18 |
|                                    | Rated current                     | 6 A    |
|                                    | Wire connection cross section AWG | AWG 20 |
|                                    | Rated current                     | 4 A    |

**Signal contact**

|  |                                   |        |
|--|-----------------------------------|--------|
| Type of connection, signal                   | Crimp connection                  |        |
| Number of poles, signal                      | 24                                |        |
| Clamping range, signal contact, max.         | 2.5 mm <sup>2</sup>               |        |
| Clamping range, signal contact, min.         | 0.5 mm <sup>2</sup>               |        |
| Stripping length, signal                     | 8 mm                              |        |
| Rated voltage (DIN EN 61984), signal contact | 160 V                             |        |
| Rated impulse voltage (DIN EN 61984), signal | 2.5 kV                            |        |
| Rated current (DIN EN 61984), signal         | 10 A                              |        |
| Rated current power circuit (UR)             | Wire connection cross section AWG | AWG 12 |
|  | Rated current                     | 16 A   |
|  | Wire connection cross section AWG | AWG 14 |
|  | Rated current                     | 13 A   |
|  | Wire connection cross section AWG | AWG 16 |
|  | Rated current                     | 10 A   |
|  | Wire connection cross section AWG | AWG 18 |
|  | Rated current                     | 7 A    |
|  | Wire connection cross section AWG | AWG 20 |
|  | Rated current                     | 5 A    |
| Rated current signal circuit (UR)            | Wire connection cross section AWG | AWG 14 |
|  | Rated current                     | 10 A   |
|  | Wire connection cross section AWG | AWG 16 |
|  | Rated current                     | 8 A    |
|  | Wire connection cross section AWG | AWG 18 |
|  | Rated current                     | 7 A    |
|  | Wire connection cross section AWG | AWG 20 |
|  | Rated current                     | 5 A    |
|  | Wire connection cross section AWG | AWG 22 |
|  | Rated current                     | 3 A    |
| Rated current signal circuit (cUR)           | Wire connection cross section AWG | AWG 14 |
|  | Rated current                     | 8 A    |
|  | Wire connection cross section AWG | AWG 16 |
|  | Rated current                     | 8 A    |

### Technical data

|                                   |                                   |        |
|-----------------------------------|-----------------------------------|--------|
|                                   | Wire connection cross section AWG | AWG 18 |
|                                   | Rated current                     | 7 A    |
|                                   | Wire connection cross section AWG | AWG 20 |
|                                   | Rated current                     | 5 A    |
|                                   | Wire connection cross section AWG | AWG 22 |
|                                   | Rated current                     | 3 A    |
| Rated current power circuit (cUR) | Wire connection cross section AWG | AWG 12 |
|                                   | Rated current                     | 14 A   |
|                                   | Wire connection cross section AWG | AWG 14 |
|                                   | Rated current                     | 10 A   |
|                                   | Wire connection cross section AWG | AWG 16 |
|                                   | Rated current                     | 8.5 A  |
|                                   | Wire connection cross section AWG | AWG 18 |
|                                   | Rated current                     | 6 A    |
|                                   | Wire connection cross section AWG | AWG 20 |
|                                   | Rated current                     | 4 A    |

### Version

|   |                   |   |                     |
|---|-------------------|---|---------------------|
| Wire connection cross section AWG, max.   | AWG 12            | Stripping length, rated connection  | 7.5 mm              |
| Type of connection  | Crimp connection  | Installation size   | 4                   |
| Volume resistance   | ≤2 mΩ             | Wire connection cross section AWG, min.   | AWG 20              |
| Wire cross-section, solid, max.   | 6 mm <sup>2</sup> | Wire cross-section, solid, min.   | 0.5 mm <sup>2</sup> |
| Wire connection cross-section, finely stranded with wire-end ferrules DIN 46228/4, max. | 6 mm <sup>2</sup> | Wire connection cross-section, finely stranded with wire-end ferrules DIN 46228/4, min. | 0.5 mm <sup>2</sup> |
| Wire connection cross section, finely stranded, max.                                    | 6 mm <sup>2</sup> | Wire connection cross section, finely stranded, min.                                    | 0.5 mm <sup>2</sup> |
| Conductor cross-section, max.   | 4 mm <sup>2</sup> | Conductor cross-section, min.   | 0.5 mm <sup>2</sup> |
| Basic material  | Copper alloy      | BG  | 4                   |

### Classifications

|             |             |             |             |
|-------------|-------------|-------------|-------------|
| ETIM 8.0    | EC000438    | ETIM 9.0    | EC000438    |
| ETIM 10.0   | EC000438    | ECLASS 14.0 | 27-44-02-05 |
| ECLASS 15.0 | 27-44-02-05 |             |             |

**Accessories**

**Slotted screwdriver**



VDE insulated slot-head screwdriver, SDI DIN 7437, ISO 2380/2, drive output acc. to DIN 5264, ISO 2380/1. SoftFinish grip

**General ordering data**

|            |                            |                          |  |
|------------|----------------------------|--------------------------|--|
| Type       | SDIS 1.2X6.5X150           | Version                  |  |
| Order No.  | <a href="#">9008420000</a> | Screwdriver, Screwdriver |  |
| GTIN (EAN) | 4032248056385              |                          |  |
| Qty.       | 1 ST                       |                          |  |

|            |                            |                          |  |
|------------|----------------------------|--------------------------|--|
| Type       | SDS 1.2X6.5X150            | Version                  |  |
| Order No.  | <a href="#">9009010000</a> | Screwdriver, Screwdriver |  |
| GTIN (EAN) | 4032248266869              |                          |  |
| Qty.       | 1 ST                       |                          |  |

**Crosshead screwdriver Phillips**



VDE insulated crosshead screwdriver, for Phillips screws, SDIK PH DIN 7438, ISO 8764/2-PH, output to ISO 8764-PH, SoftFinish grip

**General ordering data**

|            |                            |                          |  |
|------------|----------------------------|--------------------------|--|
| Type       | SDIK PH2                   | Version                  |  |
| Order No.  | <a href="#">9008580000</a> | Screwdriver, Screwdriver |  |
| GTIN (EAN) | 4032248056576              |                          |  |
| Qty.       | 1 ST                       |                          |  |

|            |                            |                          |  |
|------------|----------------------------|--------------------------|--|
| Type       | SDK PH2                    | Version                  |  |
| Order No.  | <a href="#">9008490000</a> | Screwdriver, Screwdriver |  |
| GTIN (EAN) | 4032248056484              |                          |  |
| Qty.       | 1 ST                       |                          |  |

## HDC S8/24 MC

**Weidmüller Interface GmbH & Co. KG**  
 Klingenbergstraße 26  
 D-32758 Detmold  
 Germany

www.weidmueller.com

## Accessories

### Slotted screwdriver



VDE insulated slot-head screwdriver, SDI DIN 7437, ISO 2380/2, drive output acc. to DIN 5264, ISO 2380/1. SoftFinish grip

#### General ordering data

|            |                            |                          |  |
|------------|----------------------------|--------------------------|--|
| Type       | SDIS 0.6X3.5X100           | Version                  |  |
| Order No.  | <a href="#">9008390000</a> | Screwdriver, Screwdriver |  |
| GTIN (EAN) | 4032248056354              |                          |  |
| Qty.       | 1 ST                       |                          |  |

|            |                            |                          |  |
|------------|----------------------------|--------------------------|--|
| Type       | SDS 0.6X3.5X100            | Version                  |  |
| Order No.  | <a href="#">9008330000</a> | Screwdriver, Screwdriver |  |
| GTIN (EAN) | 4032248056286              |                          |  |
| Qty.       | 1 ST                       |                          |  |

### Crimping tools



Crimping tools for turned contacts

- Ratchet guarantees precise crimping
- Release option in the event of incorrect operation
- With stop for exact positioning of the contacts.

#### General ordering data

|            |                            |   |  |
|------------|----------------------------|---|--|
| Type       | CTX CM 1.6/2.5             | Version   |  |
| Order No.  | <a href="#">9018490000</a> | Pressing tool, Crimping tool for contacts, 0.14mm <sup>2</sup> , 4mm <sup>2</sup> , W crimp |  |
| GTIN (EAN) | 4008190884598              |   |  |
| Qty.       | 1 ST                       |   |  |

|            |                            |  |  |
|------------|----------------------------|--|--|
| Type       | CTIN CM 1.6/2.5            | Version  |  |
| Order No.  | <a href="#">9205430000</a> | Pressing tool, Crimping tool for contacts, 0.14mm <sup>2</sup> , 6mm <sup>2</sup> , 4-indent crimp |  |
| GTIN (EAN) | 4032248733446              |  |  |
| Qty.       | 1 ST                       |  |  |

**HDC S8/24 MC**

**Weidmüller Interface GmbH & Co. KG**  
 Klingenbergstraße 26  
 D-32758 Detmold  
 Germany

www.weidmueller.com

**Accessories**

**Contact removal tools**



Weidmüller offers a variety of crimping tools, contact removal tools, and fibre optic tools.

**General ordering data**

|            |                            |                             |
|------------|----------------------------|-----------------------------|
| Type       | REMOVAL TOOL HE            | Version                     |
| Order No.  | <a href="#">1866750000</a> | Tools, Contact Removal Tool |
| GTIN (EAN) | 4032248437078              |                             |
| Qty.       | 1 ST                       |                             |

|            |                            |                             |
|------------|----------------------------|-----------------------------|
| Type       | REMOVAL TOOL HD            | Version                     |
| Order No.  | <a href="#">1866730000</a> | Tools, Contact Removal Tool |
| GTIN (EAN) | 4032248437054              |                             |
| Qty.       | 1 ST                       |                             |

**HE**

Various accessories are available for our inserts. This includes coding elements for the inserts.



**General ordering data**

|            |                            |   |
|------------|----------------------------|---|
| Type       | HDC HE CP                  | Version   |
| Order No.  | <a href="#">1003240000</a> | Heavy-duty connectors, Accessories, Coding System |
| GTIN (EAN) | 4032248698233              |   |
| Qty.       | 100 ST                     |   |

**Crimp contacts HE**



Crimps provide a electrical and mechanical connection between wire and contact that is both secure and reliable. The optimal crimp connection is gas-tight and corrosion-resistant.

## HDC S8/24 MC

Weidmüller Interface GmbH &amp; Co. KG

Klingenbergstraße 26

D-32758 Detmold

Germany

www.weidmueller.com

## Accessories

## General ordering data

|            |                            |   |
|------------|----------------------------|---|
| Type       | HDC-C-HE-SM0.5AG           | Version   |
| Order No.  | <a href="#">1200500000</a> | Heavy-duty connectors, Crimp contact, HE, HEE, HQ, MixMate, Male, |
| GTIN (EAN) | 4008190159627              | Conductor cross-section, max.: 0.5, turned, Copper alloy          |
| Qty.       | 100 ST                     |   |
| Type       | HDC-C-HE-SM0.75-1.00AG     | Version   |
| Order No.  | <a href="#">1200600000</a> | Heavy-duty connectors, Crimp contact, HE, HEE, HQ, MixMate, Male, |
| GTIN (EAN) | 4008190171308              | Conductor cross-section, max.: 1, turned, Copper alloy            |
| Qty.       | 100 ST                     |   |
| Type       | HDC-C-HE-SM1.5AG           | Version   |
| Order No.  | <a href="#">1200700000</a> | Heavy-duty connectors, Crimp contact, HE, HEE, HQ, MixMate, Male, |
| GTIN (EAN) | 4008190074920              | Conductor cross-section, max.: 1.5, turned, Copper alloy          |
| Qty.       | 100 ST                     |   |
| Type       | HDC-C-HE-SM2.5AG           | Version   |
| Order No.  | <a href="#">1200800000</a> | Heavy-duty connectors, Crimp contact, HE, HEE, HQ, MixMate, Male, |
| GTIN (EAN) | 4008190131913              | Conductor cross-section, max.: 2.5, turned, Copper alloy          |
| Qty.       | 100 ST                     |   |
| Type       | HDC-C-HE-SM4.0AG           | Version   |
| Order No.  | <a href="#">1200900000</a> | Heavy-duty connectors, Crimp contact, HE, HEE, HQ, MixMate, Male, |
| GTIN (EAN) | 4008190115906              | Conductor cross-section, max.: 4, turned, Copper alloy            |
| Qty.       | 100 ST                     |   |
| Type       | HDC-C-HE-SM0.5AU           | Version   |
| Order No.  | <a href="#">1651420000</a> | Heavy-duty connectors, Crimp contact, HE, HEE, HQ, MixMate, Male, |
| GTIN (EAN) | 4008190400095              | Conductor cross-section, max.: 0.5, turned, Copper alloy          |
| Qty.       | 100 ST                     |   |
| Type       | HDC-C-HE-SM0.75-1.00AU     | Version   |
| Order No.  | <a href="#">1651430000</a> | Heavy-duty connectors, Crimp contact, HE, HEE, HQ, MixMate, Male, |
| GTIN (EAN) | 4008190400101              | Conductor cross-section, max.: 1, turned, Copper alloy            |
| Qty.       | 100 ST                     |   |
| Type       | HDC-C-HE-SM1.5AU           | Version   |
| Order No.  | <a href="#">1651440000</a> | Heavy-duty connectors, Crimp contact, HE, HEE, HQ, MixMate, Male, |
| GTIN (EAN) | 4008190400118              | Conductor cross-section, max.: 1.5, turned, Copper alloy          |
| Qty.       | 100 ST                     |   |
| Type       | HDC-C-HE-SM2.5AU           | Version   |
| Order No.  | <a href="#">1651450000</a> | Heavy-duty connectors, Crimp contact, HE, HEE, HQ, MixMate, Male, |
| GTIN (EAN) | 4008190400125              | Conductor cross-section, max.: 2.5, turned, Copper alloy          |
| Qty.       | 100 ST                     |   |
| Type       | HDC-C-HE-SM4.0AU           | Version   |
| Order No.  | <a href="#">1651460000</a> | Heavy-duty connectors, Crimp contact, HE, HEE, HQ, MixMate, Male, |
| GTIN (EAN) | 4008190400132              | Conductor cross-section, max.: 4, turned, Copper alloy            |
| Qty.       | 100 ST                     |   |

## HDC S8/24 MC

Weidmüller Interface GmbH &amp; Co. KG

Klingenbergstraße 26

D-32758 Detmold

Germany

## Accessories

www.weidmueller.com

## Crimp contacts HD



Crimps provide a electrical and mechanical connection between wire and contact that is both secure and reliable. The optimal crimp connection is gas-tight and corrosion-resistant.

## General ordering data

|            |                            |   |
|------------|----------------------------|---|
| Type       | HDC-C-HD-SM0.14-0.37AG     | Version   |
| Order No.  | <a href="#">1651520000</a> | Heavy-duty connectors, Crimp contact, HD, HDD, HQ, MixMate, Male, |
| GTIN (EAN) | 4008190400194              | Conductor cross-section, max.: 0.37, turned, Copper alloy         |
| Qty.       | 100 ST                     |   |
| Type       | HDC-C-HD-SM0.5AG           | Version   |
| Order No.  | <a href="#">1651530000</a> | Heavy-duty connectors, Crimp contact, HD, HDD, HQ, MixMate, Male, |
| GTIN (EAN) | 4008190400200              | Conductor cross-section, max.: 0.5, turned, Copper alloy          |
| Qty.       | 100 ST                     |   |
| Type       | HDC-C-HD-SM0.75-1.00AG     | Version   |
| Order No.  | <a href="#">1601750000</a> | Heavy-duty connectors, Crimp contact, HD, HDD, HQ, MixMate, Male, |
| GTIN (EAN) | 4008190134280              | Conductor cross-section, max.: 1, turned, Copper alloy            |
| Qty.       | 100 ST                     |   |
| Type       | HDC-C-HD-SM1.5AG           | Version   |
| Order No.  | <a href="#">1651550000</a> | Heavy-duty connectors, Crimp contact, HD, HDD, HQ, MixMate, Male, |
| GTIN (EAN) | 4008190400224              | Conductor cross-section, max.: 1.5, turned, Copper alloy          |
| Qty.       | 100 ST                     |   |
| Type       | HDC-C-HD-SM2.5AG           | Version   |
| Order No.  | <a href="#">1651560000</a> | Heavy-duty connectors, Crimp contact, HD, HDD, HQ, MixMate, Male, |
| GTIN (EAN) | 4008190400231              | Conductor cross-section, max.: 2.5, turned, Copper alloy          |
| Qty.       | 100 ST                     |   |
| Type       | HDC-C-HD-SM0.14-0.37AU     | Version   |
| Order No.  | <a href="#">1651620000</a> | Heavy-duty connectors, Crimp contact, HD, HDD, HQ, MixMate, Male, |
| GTIN (EAN) | 4008190400293              | Conductor cross-section, max.: 0.37, turned, Copper alloy         |
| Qty.       | 100 ST                     |   |
| Type       | HDC-C-HD-SM0.5AU           | Version   |
| Order No.  | <a href="#">1651630000</a> | Heavy-duty connectors, Crimp contact, HD, HDD, HQ, MixMate, Male, |
| GTIN (EAN) | 4008190400309              | Conductor cross-section, max.: 0.5, turned, Copper alloy          |
| Qty.       | 100 ST                     |   |
| Type       | HDC-C-HD-SM0.75-1.00AU     | Version   |
| Order No.  | <a href="#">1651640000</a> | Heavy-duty connectors, Crimp contact, HD, HDD, HQ, MixMate, Male, |
| GTIN (EAN) | 4008190400316              | Conductor cross-section, max.: 1, turned, Copper alloy            |
| Qty.       | 100 ST                     |   |
| Type       | HDC-C-HD-SM1.5AU           | Version   |
| Order No.  | <a href="#">1651650000</a> | Heavy-duty connectors, Crimp contact, HD, HDD, HQ, MixMate, Male, |
| GTIN (EAN) | 4008190400323              | Conductor cross-section, max.: 1.5, turned, Copper alloy          |
| Qty.       | 100 ST                     |   |
| Type       | HDC-C-HD-SM2.5AU           | Version   |
| Order No.  | <a href="#">1651660000</a> | Heavy-duty connectors, Crimp contact, HD, HDD, HQ, MixMate, Male, |
| GTIN (EAN) | 4008190400330              | Conductor cross-section, max.: 2.5, turned, Copper alloy          |
| Qty.       | 100 ST                     |   |