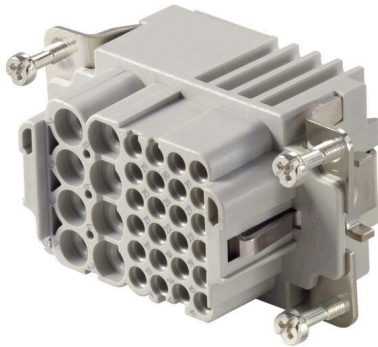


**HDC S8/24 FC****Weidmüller Interface GmbH & Co. KG**

Klingenbergstraße 26

D-32758 Detmold

Germany

[www.weidmueller.com](http://www.weidmueller.com)

The MixMate series of connectors can simultaneously transmit high rated currents and voltages as well as signals.

The wire connection level is designed as a crimp contact.

The established crimp connection has been used as a standard for decades.

Crimp contacts are not delivered with the inserts.

Crimp connection

**General ordering data**

Version	HDC insert, Female, 400 V, 16 A, Number of poles: 32, Crimp connection, Installation size: 4
Order No.	<a href="#">1023270000</a>
Type	HDC S8/24 FC
GTIN (EAN)	4032248739431
Qty.	1 items

## Technical data

### Approvals

Approvals



ROHS	Conform
------	---------

UL File Number Search	<a href="#">UL Website</a>
-----------------------	----------------------------

Certificate No. (cURus)	E92202
-------------------------	--------

### Dimensions and weights

Depth	64 mm	Depth (inches)	2.5197 inch
Height	37.8 mm	Height (inches)	1.4882 inch
Width	34 mm	Width (inches)	1.3386 inch
Net weight	48.4 g		

### Temperatures

Limit temperature	-40 °C ... 125 °C
-------------------	-------------------

### Environmental Product Compliance

RoHS Compliance Status	Compliant without exemption
REACH SVHC	Potassium perfluorobutane sulfonate 29420-49-3
SCIP	1609748e-c278-4c9b-b3d1-e6215d2988cd

Chemical resistance	Substance	Acetone
	Chemical resistance	Resistant
	Substance	Ammonia, watery
	Chemical resistance	Conditionally resistant
	Substance	Petrol
	Chemical resistance	Resistant
	Substance	Benzene
	Chemical resistance	Resistant
	Substance	Diesel oil
	Chemical resistance	Conditionally resistant
	Substance	Acetic acid, concentrated
	Chemical resistance	Resistant
	Substance	Potassium hydroxide
	Chemical resistance	Conditionally resistant
	Substance	Methanol
	Chemical resistance	Conditionally resistant
	Substance	Motor oil
	Chemical resistance	Conditionally resistant
	Substance	Lye, diluted
	Chemical resistance	Resistant
	Substance	Hydrochlorofluorocarbons
	Chemical resistance	Conditionally resistant
	Substance	Outdoor use
	Chemical resistance	Conditionally resistant

### Dimensions

Width	34 mm	Total length base	64 mm
Height of socket	37.8 mm		

## HDC S8/24 FC

Weidmüller Interface GmbH &amp; Co. KG

Klingenbergstraße 26  
D-32758 Detmold  
Germany

[www.weidmueller.com](http://www.weidmueller.com)

## Technical data

## General data

Number of poles	32	Plugging cycles, silver	≥ 500
Plugging cycles, gold	≥ 500	Type of connection	Crimp connection
Installation size	4	UL 94 flammability rating	V-0
Volume resistance	≤2 mΩ	Colour	beige
Insulation resistance	1010 Ω	Insulating material	PC glass-fibre reinforced (UL-listed and railway-certified)
Insulating material group	IIIa	Type	Female
Pollution severity	3	Basic material	Copper alloy
Series	MixMate	Rated voltage (DIN EN 61984)	400 V
Rated voltage according to UL/CSA	600 V AC/DC	Rated impulse voltage (DIN EN 61984)	4 kV
Rated current (DIN EN 61984)	16 A	Free from halogens	true
Low smoke acc. DIN EN 45545-2	Yes	BG	4
Number of signal contacts	24	Signal contact, type	HD
Number of power contacts	8	Power contact, type	HE

## Connection data PE

Connection type PE	Screw connection	Blade size, slotted (PE connection)	SD 1.2 x 6.5
Stripping length PE connection	13 mm	Tightening torque, max. PE connection	2.5 Nm
Tightening torque, min. PE connection	2 Nm	Fixing screw	M 5
Rated cross-section	6 mm <sup>2</sup>	Wire cross section, AWG (PE), min.	AWG 20
Wire cross section, AWG (PE), max.	AWG 10		

## Power contact

Type of connection, power contact	Crimp connection	
Number of poles, performance contact	8	
Stripping length, performance contact	7.5 mm	
Clamping range, power contact, max.	4 mm <sup>2</sup>	
Clamping range, power contact, min.	0.5 mm <sup>2</sup>	
Rated voltage (DIN EN 61984), power contact	400 V	
Rated impulse voltage (DIN EN 61984), power contact	4 kV	
Rated current (DIN EN 61984), power contact	16 A	
Rated current power circuit (UR)	Wire connection cross section AWG	AWG 12
	Rated current	16 A
	Wire connection cross section AWG	AWG 14
	Rated current	13 A
	Wire connection cross section AWG	AWG 16
	Rated current	10 A
	Wire connection cross section AWG	AWG 18
	Rated current	7 A
	Wire connection cross section AWG	AWG 20
Rated current signal circuit (UR)	Rated current	5 A
	Wire connection cross section AWG	AWG 14
	Rated current	10 A
	Wire connection cross section AWG	AWG 16
	Rated current	8 A
	Wire connection cross section AWG	AWG 18
	Rated current	7 A
	Wire connection cross section AWG	AWG 20
	Rated current	5 A
	Wire connection cross section AWG	AWG 22
	Rated current	5 A

## HDC S8/24 FC

Weidmüller Interface GmbH &amp; Co. KG

Klingenbergstraße 26

D-32758 Detmold

Germany

www.weidmueller.com

## Technical data

Rated current signal circuit (cUR)	Rated current	3 A
	Wire connection cross section AWG	AWG 14
	Rated current	8 A
	Wire connection cross section AWG	AWG 16
	Rated current	8 A
	Wire connection cross section AWG	AWG 18
	Rated current	7 A
	Wire connection cross section AWG	AWG 20
	Rated current	5 A
	Wire connection cross section AWG	AWG 22
Rated current power circuit (cUR)	Rated current	3 A
	Wire connection cross section AWG	AWG 12
	Rated current	14 A
	Wire connection cross section AWG	AWG 14
	Rated current	10 A
	Wire connection cross section AWG	AWG 16
	Rated current	8.5 A
	Wire connection cross section AWG	AWG 18
	Rated current	6 A
	Wire connection cross section AWG	AWG 20
	Rated current	4 A

## Signal contact

Type of connection, signal	Crimp connection	
Number of poles, signal	24	
Clamping range, signal contact, max.	2.5 mm <sup>2</sup>	
Clamping range, signal contact, min.	0.5 mm <sup>2</sup>	
Stripping length, signal	8 mm	
Rated voltage (DIN EN 61984), signal contact	160 V	
Rated impulse voltage (DIN EN 61984), signal	2.5 kV	
Rated current (DIN EN 61984), signal	10 A	
Rated current power circuit (UR)	Wire connection cross section AWG	AWG 12
	Rated current	16 A
	Wire connection cross section AWG	AWG 14
	Rated current	13 A
	Wire connection cross section AWG	AWG 16
	Rated current	10 A
	Wire connection cross section AWG	AWG 18
	Rated current	7 A
	Wire connection cross section AWG	AWG 20
	Rated current	5 A
Rated current signal circuit (UR)	Wire connection cross section AWG	AWG 14
	Rated current	10 A
	Wire connection cross section AWG	AWG 16
	Rated current	8 A
	Wire connection cross section AWG	AWG 18
	Rated current	7 A
	Wire connection cross section AWG	AWG 20
	Rated current	5 A
	Wire connection cross section AWG	AWG 22
	Rated current	3 A
Rated current signal circuit (cUR)	Wire connection cross section AWG	AWG 14
	Rated current	8 A
	Wire connection cross section AWG	AWG 16
	Rated current	8 A

## HDC S8/24 FC

Weidmüller Interface GmbH &amp; Co. KG

Klingenbergstraße 26

D-32758 Detmold

Germany

www.weidmueller.com

## Technical data

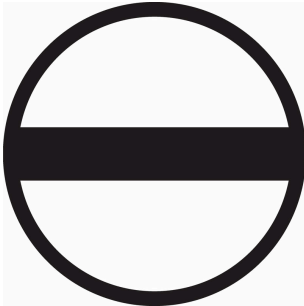
Rated current power circuit (cUR)	Wire connection cross section AWG	AWG 18
	Rated current	7 A
	Wire connection cross section AWG	AWG 20
	Rated current	5 A
	Wire connection cross section AWG	AWG 22
	Rated current	3 A
	Wire connection cross section AWG	AWG 12
	Rated current	14 A
	Wire connection cross section AWG	AWG 14
	Rated current	10 A
	Wire connection cross section AWG	AWG 16
	Rated current	8.5 A
	Wire connection cross section AWG	AWG 18
	Rated current	6 A
	Wire connection cross section AWG	AWG 20
	Rated current	4 A

## Version

Wire connection cross section AWG, max.	AWG 12	Stripping length, rated connection	7.5 mm
Type of connection	Crimp connection	Installation size	4
Volume resistance	≤2 mΩ	Wire connection cross section AWG, min.	AWG 20
Wire cross-section, solid, max.	6 mm <sup>2</sup>	Wire cross-section, solid, min.	0.5 mm <sup>2</sup>
Wire connection cross-section, finely stranded with wire-end ferrules DIN 46228/4, max.	6 mm <sup>2</sup>	Wire connection cross-section, finely stranded with wire-end ferrules DIN 46228/4, min.	0.5 mm <sup>2</sup>
Wire connection cross section, finely stranded, max.	6 mm <sup>2</sup>	Wire connection cross section, finely stranded, min.	0.5 mm <sup>2</sup>
Conductor cross-section, max.	4 mm <sup>2</sup>	Conductor cross-section, min.	0.5 mm <sup>2</sup>
Basic material	Copper alloy	BG	4

## Classifications

ETIM 8.0	EC000438	ETIM 9.0	EC000438
ETIM 10.0	EC000438	ECLASS 14.0	27-44-02-05
ECLASS 15.0	27-44-02-05		

**Accessories****Slotted screwdriver**

VDE insulated slot-head screwdriver, SDI DIN 7437, ISO 2380/2, drive output acc. to DIN 5264, ISO 2380/1. SoftFinish grip

**General ordering data**

Type	SDIS 1.2X6.5X150	Version
Order No.	<a href="#">9008420000</a>	Screwdriver, Screwdriver
GTIN (EAN)	4032248056385	
Qty.	1 ST	
Type	SDS 1.2X6.5X150	Version
Order No.	<a href="#">9009010000</a>	Screwdriver, Screwdriver
GTIN (EAN)	4032248266869	
Qty.	1 ST	

**Crosshead screwdriver Phillips**

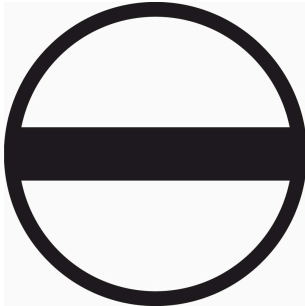
VDE insulated crosshead screwdriver, for Phillips screws, SDIK PH DIN 7438, ISO 8764/2-PH, output to ISO 8764-PH, SoftFinish grip

**General ordering data**

Type	SDIK PH2	Version
Order No.	<a href="#">9008580000</a>	Screwdriver, Screwdriver
GTIN (EAN)	4032248056576	
Qty.	1 ST	
Type	SDK PH2	Version
Order No.	<a href="#">9008490000</a>	Screwdriver, Screwdriver
GTIN (EAN)	4032248056484	
Qty.	1 ST	

## Accessories

## Slotted screwdriver



VDE insulated slot-head screwdriver, SDI DIN 7437, ISO 2380/2, drive output acc. to DIN 5264, ISO 2380/1. SoftFinish grip

## General ordering data

Type	SDIS 0.6X3.5X100	Version
Order No.	<a href="#">9008390000</a>	Screwdriver, Screwdriver
GTIN (EAN)	4032248056354	
Qty.	1 ST	
Type	SDS 0.6X3.5X100	Version
Order No.	<a href="#">9008330000</a>	Screwdriver, Screwdriver
GTIN (EAN)	4032248056286	
Qty.	1 ST	

## Crimping tools



Crimping tools for turned contacts

- Ratchet guarantees precise crimping
- Release option in the event of incorrect operation
- With stop for exact positioning of the contacts.

## General ordering data

Type	CTX CM 1.6/2.5	Version
Order No.	<a href="#">9018490000</a>	Pressing tool, Crimping tool for contacts, 0.14mm², 4mm², W crimp
GTIN (EAN)	4008190884598	
Qty.	1 ST	
Type	CTIN CM 1.6/2.5	Version
Order No.	<a href="#">9205430000</a>	Pressing tool, Crimping tool for contacts, 0.14mm², 6mm², 4-indent crimp
GTIN (EAN)	4032248733446	
Qty.	1 ST	

## HDC S8/24 FC

Weidmüller Interface GmbH &amp; Co. KG

Klingenbergstraße 26

D-32758 Detmold

Germany

www.weidmueller.com

## Accessories

## Contact removal tools



Weidmüller offers a variety of crimping tools, contact removal tools, and fibre optic tools.

## General ordering data

Type	REMOVAL TOOL HE	Version
Order No.	<a href="#">1866750000</a>	Tools, Contact Removal Tool
GTIN (EAN)	4032248437078	
Qty.	1 ST	
Type	REMOVAL TOOL HD	Version
Order No.	<a href="#">1866730000</a>	Tools, Contact Removal Tool
GTIN (EAN)	4032248437054	
Qty.	1 ST	

## HE

Various accessories are available for our inserts. This includes coding elements for the inserts.



## General ordering data

Type	HDC HE CP	Version
Order No.	<a href="#">1003240000</a>	Heavy-duty connectors, Accessories, Coding System
GTIN (EAN)	4032248698233	
Qty.	100 ST	

## Crimp contacts HE



Crimps provide a electrical and mechanical connection between wire and contact that is both secure and reliable. The optimal crimp connection is gas-tight and corrosion-resistant.



## HDC S8/24 FC

Weidmüller Interface GmbH &amp; Co. KG

Klingenbergstraße 26

D-32758 Detmold

Germany

www.weidmueller.com

## Accessories

## General ordering data

Type	HDC-C-HE-BM0.5AG	Version
Order No.	<a href="#">1201100000</a>	Heavy-duty connectors, Crimp contact, HE, HEE, HQ, MixMate,
GTIN (EAN)	4008190142698	Female, Conductor cross-section, max.: 0.5, turned, Copper alloy
Qty.	100 ST	
Type	HDC-C-HE-BM0.75-1.00AG	Version
Order No.	<a href="#">1201200000</a>	Heavy-duty connectors, Crimp contact, HE, HEE, HQ, MixMate,
GTIN (EAN)	4008190044480	Female, Conductor cross-section, max.: 1, turned, Copper alloy
Qty.	100 ST	
Type	HDC-C-HE-BM1.5AG	Version
Order No.	<a href="#">1201300000</a>	Heavy-duty connectors, Crimp contact, HE, HEE, HQ, MixMate,
GTIN (EAN)	4008190100346	Female, Conductor cross-section, max.: 1.5, turned, Copper alloy
Qty.	100 ST	
Type	HDC-C-HE-BM2.5AG	Version
Order No.	<a href="#">1201400000</a>	Heavy-duty connectors, Crimp contact, HE, HEE, HQ, MixMate,
GTIN (EAN)	4008190047078	Female, Conductor cross-section, max.: 2.5, turned, Copper alloy
Qty.	100 ST	
Type	HDC-C-HE-BM4.0AG	Version
Order No.	<a href="#">1201500000</a>	Heavy-duty connectors, Crimp contact, HE, HEE, HQ, MixMate,
GTIN (EAN)	4008190148096	Female, Conductor cross-section, max.: 4, turned, Copper alloy
Qty.	100 ST	
Type	HDC-C-HE-BM0.5AU	Version
Order No.	<a href="#">1651470000</a>	Heavy-duty connectors, Crimp contact, HE, HEE, HQ, MixMate,
GTIN (EAN)	4008190400149	Female, Conductor cross-section, max.: 0.5, turned, Copper alloy
Qty.	100 ST	
Type	HDC-C-HE-BM0.75-1.00AU	Version
Order No.	<a href="#">1651480000</a>	Heavy-duty connectors, Crimp contact, HE, HEE, HQ, MixMate,
GTIN (EAN)	4008190400156	Female, Conductor cross-section, max.: 1, turned, Copper alloy
Qty.	100 ST	
Type	HDC-C-HE-BM1.5AU	Version
Order No.	<a href="#">1651490000</a>	Heavy-duty connectors, Crimp contact, HE, HEE, HQ, MixMate,
GTIN (EAN)	4008190400163	Female, Conductor cross-section, max.: 1.5, turned, Copper alloy
Qty.	100 ST	
Type	HDC-C-HE-BM2.5AU	Version
Order No.	<a href="#">1651500000</a>	Heavy-duty connectors, Crimp contact, HE, HEE, HQ, MixMate,
GTIN (EAN)	4008190400170	Female, Conductor cross-section, max.: 2.5, turned, Copper alloy
Qty.	100 ST	
Type	HDC-C-HE-BM4.0AU	Version
Order No.	<a href="#">1651510000</a>	Heavy-duty connectors, Crimp contact, HE, HEE, HQ, MixMate,
GTIN (EAN)	4008190400187	Female, Conductor cross-section, max.: 4, turned, Copper alloy
Qty.	100 ST	

## HDC S8/24 FC

Weidmüller Interface GmbH &amp; Co. KG

Klingenbergstraße 26

D-32758 Detmold

Germany

www.weidmueller.com

## Accessories

## Crimp contacts HD



Crimps provide a electrical and mechanical connection between wire and contact that is both secure and reliable. The optimal crimp connection is gas-tight and corrosion-resistant.

## General ordering data

Type	HDC-C-HD-BM0.14-0.37AG	Version
Order No.	<a href="#">1651570000</a>	Heavy-duty connectors, Crimp contact, HD, HDD, HQ, MixMate,
GTIN (EAN)	4008190400248	Female, Conductor cross-section, max.: 0.37, turned, Copper alloy
Qty.	100 ST	
Type	HDC-C-HD-BM0.5AG	Version
Order No.	<a href="#">1651580000</a>	Heavy-duty connectors, Crimp contact, HD, HDD, HQ, MixMate,
GTIN (EAN)	4008190400255	Female, Conductor cross-section, max.: 0.5, turned, Copper alloy
Qty.	100 ST	
Type	HDC-C-HD-BM0.75-1.00AG	Version
Order No.	<a href="#">1601760000</a>	Heavy-duty connectors, Crimp contact, HD, HDD, HQ, MixMate,
GTIN (EAN)	4008190158354	Female, Conductor cross-section, max.: 1, turned, Copper alloy
Qty.	100 ST	
Type	HDC-C-HD-BM1.5AG	Version
Order No.	<a href="#">1651600000</a>	Heavy-duty connectors, Crimp contact, HD, HDD, HQ, MixMate,
GTIN (EAN)	4008190400279	Female, Conductor cross-section, max.: 1.5, turned, Copper alloy
Qty.	100 ST	
Type	HDC-C-HD-BM2.5AG	Version
Order No.	<a href="#">1651610000</a>	Heavy-duty connectors, Crimp contact, HD, HDD, HQ, MixMate,
GTIN (EAN)	4008190400286	Female, Conductor cross-section, max.: 2.5, turned, Copper alloy
Qty.	100 ST	
Type	HDC-C-HD-BM0.14-0.37AU	Version
Order No.	<a href="#">1651670000</a>	Heavy-duty connectors, Crimp contact, HD, HDD, HQ, MixMate,
GTIN (EAN)	4008190400347	Female, Conductor cross-section, max.: 0.37, turned, Copper alloy
Qty.	100 ST	
Type	HDC-C-HD-BM0.5AU	Version
Order No.	<a href="#">1651680000</a>	Heavy-duty connectors, Crimp contact, HD, HDD, HQ, MixMate,
GTIN (EAN)	4008190400354	Female, Conductor cross-section, max.: 0.5, turned, Copper alloy
Qty.	100 ST	
Type	HDC-C-HD-BM0.75-1.00AU	Version
Order No.	<a href="#">1651690000</a>	Heavy-duty connectors, Crimp contact, HD, HDD, HQ, MixMate,
GTIN (EAN)	4008190400361	Female, Conductor cross-section, max.: 1, turned, Copper alloy
Qty.	100 ST	
Type	HDC-C-HD-BM1.5AU	Version
Order No.	<a href="#">1651700000</a>	Heavy-duty connectors, Crimp contact, HD, HDD, HQ, MixMate,
GTIN (EAN)	4008190400378	Female, Conductor cross-section, max.: 1.5, turned, Copper alloy
Qty.	100 ST	
Type	HDC-C-HD-BM2.5AU	Version
Order No.	<a href="#">1651710000</a>	Heavy-duty connectors, Crimp contact, HD, HDD, HQ, MixMate,
GTIN (EAN)	4008190400385	Female, Conductor cross-section, max.: 2.5, turned, Copper alloy
Qty.	100 ST	