

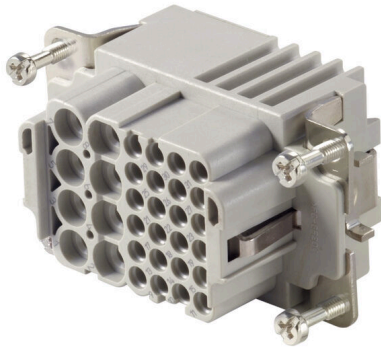
HDC S8/24 FC**Weidmüller Interface GmbH & Co. KG**

Klingenbergstraße 26

D-32758 Detmold

Germany

www.weidmueller.com



The MixMate series of connectors can simultaneously transmit high rated currents and voltages as well as signals.

The wire connection level is designed as a crimp contact.

The established crimp connection has been used as a standard for decades.

Crimp contacts are not delivered with the inserts.

Crimp connection

General ordering data

| | |
|------------|--|
| Version | HDC insert, Female, 400 V, 16 A, Number of poles: 32, Crimp connection, Installation size: 4 |
| Order No. | 1023270000 |
| Type | HDC S8/24 FC |
| GTIN (EAN) | 4032248739431 |
| Qty. | 1 items |

Technical data

Approvals

Approvals



| | |
|-------------------------|----------------------------|
| ROHS | Conform |
| UL File Number Search | UL Website |
| Certificate No. (cURus) | E92202 |

Dimensions and weights

| | | | |
|------------|---------|-----------------|-------------|
| Depth | 64 mm | Depth (inches) | 2.5197 inch |
| Height | 37.8 mm | Height (inches) | 1.4882 inch |
| Width | 34 mm | Width (inches) | 1.3386 inch |
| Net weight | 48.4 g | | |

Temperatures

| | |
|-------------------|-------------------|
| Limit temperature | -40 °C ... 125 °C |
|-------------------|-------------------|

Environmental Product Compliance

| | |
|------------------------|--|
| RoHS Compliance Status | Compliant without exemption |
| REACH SVHC | Potassium perfluorobutane sulfonate 29420-49-3 |
| SCIP | 1609748e-c278-4c9b-b3d1-e6215d2988cd |

| | | |
|---------------------|--------------------------|---------------------------|
| Chemical resistance | Substance | Acetone |
| | Chemical resistance | Resistant |
| | Substance | Ammonia, watery |
| | Chemical resistance | Conditionally resistant |
| | Substance | Petrol |
| | Chemical resistance | Resistant |
| | Substance | Benzene |
| | Chemical resistance | Resistant |
| | Substance | Diesel oil |
| | Chemical resistance | Conditionally resistant |
| | Substance | Acetic acid, concentrated |
| | Chemical resistance | Resistant |
| | Substance | Potassium hydroxide |
| | Chemical resistance | Conditionally resistant |
| | Substance | Methanol |
| | Chemical resistance | Conditionally resistant |
| | Substance | Motor oil |
| | Chemical resistance | Conditionally resistant |
| | Substance | Lye, diluted |
| | Chemical resistance | Resistant |
| Substance | Hydrochlorofluorocarbons | |
| Chemical resistance | Conditionally resistant | |
| Substance | Outdoor use | |
| Chemical resistance | Conditionally resistant | |

Dimensions

| | | | |
|------------------|---------|-------------------|-------|
| Width | 34 mm | Total length base | 64 mm |
| Height of socket | 37.8 mm | | |

HDC S8/24 FC

Weidmüller Interface GmbH & Co. KG

Klingenbergstraße 26

D-32758 Detmold

Germany

www.weidmueller.com

Technical data

General data

| | | | |
|---------------------------------------|---|---------------------------------------|-------------|
| Number of poles | 32 | Tightening torque | 0.5 Nm |
| Plugging cycles, silver | ≥ 500 | Plugging cycles, gold | ≥ 500 |
| Type of connection | Crimp connection | Installation size | 4 |
| UL 94 flammability rating | V-0 | Volume resistance | ≤2 mΩ |
| Colour | beige | Insulation resistance | 1010 Ω |
| Insulating material | PC glass-fibre reinforced (UL-listed and railway-certified) | Insulating material group | IIIa |
| Tightening torque, max. PE connection | 2.5 Nm | Type | Female |
| Pollution severity | 3 | Tightening torque, min. PE connection | 2 Nm |
| Basic material | Copper alloy | Series | MixMate |
| Rated voltage (DIN EN 61984) | 400 V | Rated voltage according to UL/CSA | 600 V AC/DC |
| Rated impulse voltage (DIN EN 61984) | 4 kV | Rated current (DIN EN 61984) | 16 A |
| Free from halogens | true | Low smoke acc. DIN EN 45545-2 | Yes |
| BG | 4 | Number of signal contacts | 24 |
| Signal contact, type | HD | Number of power contacts | 8 |
| Power contact, type | HE | | |

Connection data PE

| | | | |
|---------------------------------------|-------------------|---------------------------------------|--------------|
| Connection type PE | Screw connection | Blade size, slotted (PE connection) | SD 1.2 x 6.5 |
| Stripping length PE connection | 13 mm | Tightening torque, max. PE connection | 2.5 Nm |
| Tightening torque, min. PE connection | 2 Nm | Fixing screw | M 5 |
| Rated cross-section | 6 mm ² | Wire cross section, AWG (PE), min. | AWG 20 |
| Wire cross section, AWG (PE), max. | AWG 10 | | |

Power contact

| | | | |
|---|-----------------------------------|--------|--|
| Type of connection, power contact | Crimp connection | | |
| Number of poles, performance contact | 8 | | |
| Stripping length, performance contact | 7.5 mm | | |
| Clamping range, power contact, max. | 4 mm ² | | |
| Clamping range, power contact, min. | 0.5 mm ² | | |
| Rated voltage (DIN EN 61984), power contact | 400 V | | |
| Rated impulse voltage (DIN EN 61984), power contact | 4 kV | | |
| Rated current (DIN EN 61984), power contact | 16 A | | |
| Rated current power circuit (UR) | Wire connection cross section AWG | AWG 12 | |
| | Rated current | 16 A | |
| | Wire connection cross section AWG | AWG 14 | |
| | Rated current | 13 A | |
| | Wire connection cross section AWG | AWG 16 | |
| | Rated current | 10 A | |
| | Wire connection cross section AWG | AWG 18 | |
| | Rated current | 7 A | |
| Rated current signal circuit (UR) | Wire connection cross section AWG | AWG 20 | |
| | Rated current | 5 A | |
| | Wire connection cross section AWG | AWG 14 | |
| | Rated current | 10 A | |
| | Wire connection cross section AWG | AWG 16 | |
| | Rated current | 8 A | |
| | Wire connection cross section AWG | AWG 18 | |
| | Rated current | 7 A | |
| | Wire connection cross section AWG | AWG 20 | |

Technical data

| | | |
|------------------------------------|-----------------------------------|--------|
| | Rated current | 5 A |
| | Wire connection cross section AWG | AWG 22 |
| Rated current signal circuit (cUR) | Rated current | 3 A |
| | Wire connection cross section AWG | AWG 14 |
| | Rated current | 8 A |
| | Wire connection cross section AWG | AWG 16 |
| | Rated current | 8 A |
| | Wire connection cross section AWG | AWG 18 |
| | Rated current | 7 A |
| | Wire connection cross section AWG | AWG 20 |
| | Rated current | 5 A |
| | Wire connection cross section AWG | AWG 22 |
| Rated current power circuit (cUR) | Rated current | 3 A |
| | Wire connection cross section AWG | AWG 12 |
| | Rated current | 14 A |
| | Wire connection cross section AWG | AWG 14 |
| | Rated current | 10 A |
| | Wire connection cross section AWG | AWG 16 |
| | Rated current | 8.5 A |
| | Wire connection cross section AWG | AWG 18 |
| | Rated current | 6 A |
| | Wire connection cross section AWG | AWG 20 |
| | Rated current | 4 A |

Signal contact

| | | |
|--|-----------------------------------|--------|
| Type of connection, signal | Crimp connection | |
| Number of poles, signal | 24 | |
| Clamping range, signal contact, max. | 2.5 mm ² | |
| Clamping range, signal contact, min. | 0.5 mm ² | |
| Stripping length, signal | 8 mm | |
| Rated voltage (DIN EN 61984), signal contact | 160 V | |
| Rated impulse voltage (DIN EN 61984), signal | 2.5 kV | |
| Rated current (DIN EN 61984), signal | 10 A | |
| Rated current power circuit (UR) | Wire connection cross section AWG | AWG 12 |
| | Rated current | 16 A |
| | Wire connection cross section AWG | AWG 14 |
| | Rated current | 13 A |
| | Wire connection cross section AWG | AWG 16 |
| | Rated current | 10 A |
| | Wire connection cross section AWG | AWG 18 |
| | Rated current | 7 A |
| | Wire connection cross section AWG | AWG 20 |
| | Rated current | 5 A |
| Rated current signal circuit (UR) | Wire connection cross section AWG | AWG 14 |
| | Rated current | 10 A |
| | Wire connection cross section AWG | AWG 16 |
| | Rated current | 8 A |
| | Wire connection cross section AWG | AWG 18 |
| | Rated current | 7 A |
| | Wire connection cross section AWG | AWG 20 |
| | Rated current | 5 A |
| | Wire connection cross section AWG | AWG 22 |
| | Rated current | 3 A |
| Rated current signal circuit (cUR) | Wire connection cross section AWG | AWG 14 |
| | Rated current | 8 A |

Technical data

| | | |
|-----------------------------------|-----------------------------------|--------|
| Rated current power circuit (cUR) | Wire connection cross section AWG | AWG 16 |
| | Rated current | 8 A |
| | Wire connection cross section AWG | AWG 18 |
| | Rated current | 7 A |
| | Wire connection cross section AWG | AWG 20 |
| | Rated current | 5 A |
| | Wire connection cross section AWG | AWG 22 |
| | Rated current | 3 A |
| | Wire connection cross section AWG | AWG 12 |
| | Rated current | 14 A |
| | Wire connection cross section AWG | AWG 14 |
| | Rated current | 10 A |
| | Wire connection cross section AWG | AWG 16 |
| | Rated current | 8.5 A |
| | Wire connection cross section AWG | AWG 18 |
| | Rated current | 6 A |
| Wire connection cross section AWG | AWG 20 | |
| Rated current | 4 A | |

Version

| | | | |
|---|-------------------|---|---------------------|
| Wire connection cross section AWG, max. | AWG 12 | Stripping length, rated connection | 7.5 mm |
| Type of connection | Crimp connection | Installation size | 4 |
| Volume resistance | ≤2 mΩ | Wire connection cross section AWG, min. | AWG 20 |
| Wire cross-section, solid, max. | 6 mm ² | Wire cross-section, solid, min. | 0.5 mm ² |
| Wire connection cross-section, finely stranded with wire-end ferrules DIN 46228/4, max. | 6 mm ² | Wire connection cross-section, finely stranded with wire-end ferrules DIN 46228/4, min. | 0.5 mm ² |
| Wire connection cross section, finely stranded, max. | 6 mm ² | Wire connection cross section, finely stranded, min. | 0.5 mm ² |
| Conductor cross-section, max. | 4 mm ² | Conductor cross-section, min. | 0.5 mm ² |
| Basic material | Copper alloy | BG | 4 |

Classifications

| | | | |
|-------------|-------------|-------------|-------------|
| ETIM 8.0 | EC000438 | ETIM 9.0 | EC000438 |
| ETIM 10.0 | EC000438 | ECLASS 14.0 | 27-44-02-05 |
| ECLASS 15.0 | 27-44-02-05 | | |

