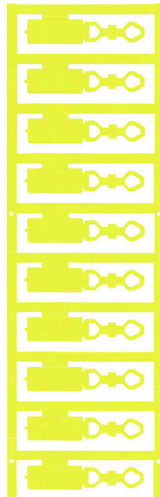


DMC 12/27 MC NE GE

Weidmüller Interface GmbH & Co. KG

Klingenbergstraße 26
D-32758 Detmold
Germany

www.weidmueller.com



The DMC markers can be used for labelling switching devices or sub-assemblies. The large (12 x 27 mm) marking surface offers sufficient room for information describing the device and its function. Only one tag size for cable cross-sections from 0.5 – 10 mm² enables use on both multi-core control cables and single cores. For custom printing: Please send us a file of our labeling software M-Print PRO or M-Print PRO Online (without installation) for your labeling specifications.

General ordering data

Version	DMC, Device markers, 1.5 - 7.5 mm, 12 x 27 mm, yellow
Order No.	1018190000
Type	DMC 12/27 MC NE GE
GTIN (EAN)	403224872924 1
Qty.	50 items

DMC 12/27 MC NE GE

Weidmüller Interface GmbH & Co. KG
 Klingenbergstraße 26
 D-32758 Detmold
 Germany

www.weidmueller.com

Technical data

Approvals

ROHS	Conform
------	---------

Dimensions and weights

Depth	5 mm	Depth (inches)	0.1968 inch
Height	12 mm	Height (inches)	0.4724 inch
Width	27 mm	Width (inches)	1.063 inch
Net weight	2.28 g		

Temperatures

Operating temperature range	-40...100 °C
-----------------------------	--------------

Environmental Product Compliance

RoHS Compliance Status	Compliant without exemption	
REACH SVHC	No SVHC above 0.1 wt%	
Product Carbon Footprint	Cradle to gate	0.015 kg CO2 eq.

General data

Material colour according to resistance code	4	
Width	27 mm	
UL 94 flammability rating	V-2	
Operating temperature range, max.	100 °C	
Operating temperature range, min.	-40 °C	
Colour	yellow	
Halogen	No	
Basic material	Polyamide 66	
Printed characters	neutral	
Number of markers per packaging unit compatible printer	Form of supply	MultiCard
	PRINTJET CONNECT , MCP BASIC 2 , MCP PLUS 2	
Number of markers per combination	1 MultiCard = Device markers	
Operating temperature range	-40...100 °C	

Device markers

Halogen	No
---------	----

Classifications

ETIM 8.0	EC001530	ETIM 9.0	EC001530
ETIM 10.0	EC001530	ECLASS 14.0	27-28-11-02
ECLASS 15.0	27-28-11-02		

