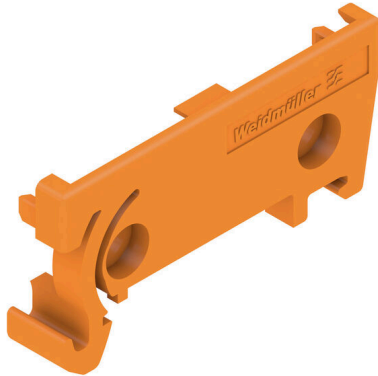


**AP 45/RE OR 1665**
**Weidmüller Interface GmbH & Co. KG**

 Klingenbergstraße 26  
 D-32758 Detmold  
 Germany

[www.weidmueller.com](http://www.weidmueller.com)


The RS 100 Profi offers you a flexible solution for your mounting needs, as both DIN rail mounting and wall mounting are possible. This versatility facilitates integration into different environments and applications. The housing can be used for the Eurocard PCB standard. The profile can be cut to size so that you can adapt it precisely to your specific requirements. For particularly heavy components, additional locking feet can be used to improve stability and thus increase the safety of your installation.

Another practical feature is the option of using a cover profile to protect large components.

**General ordering data**

|            |   |
|------------|---|
| Version    | End plate, RS 45 orange, End plate DIN mounting rail right, Width: 8 mm |
| Order No.  | <a href="#">101160000</a>   |
| Type       | AP 45/RE OR 1665  |
| GTIN (EAN) | 4032248723560   |
| Qty.       | 20 items  |

## AP 45/RE OR 1665

**Weidmüller Interface GmbH & Co. KG**  
 Klingenbergstraße 26  
 D-32758 Detmold  
 Germany

www.weidmueller.com

## Technical data

### Approvals

|      |         |
|------|---------|
| ROHS | Conform |
|------|---------|

### Dimensions and weights

|            |         |                 |             |
|------------|---------|-----------------|-------------|
| Depth      | 22.8 mm | Depth (inches)  | 0.8976 inch |
| Height     | 45 mm   | Height (inches) | 1.7716 inch |
| Width      | 8 mm    | Width (inches)  | 0.315 inch  |
| Length     | 45 mm   | Length (inches) | 1.7716 inch |
| Net weight | 2.35 g  |                 |             |

### Environmental Product Compliance

|                        |                             |
|------------------------|-----------------------------|
| RoHS Compliance Status | Compliant without exemption |
| REACH SVHC             | No SVHC above 0.1 wt%       |

### Material data

|                           |       |                                  |           |
|---------------------------|-------|----------------------------------|-----------|
| UL 94 flammability rating | V-2   | Insulating material              | PA 66     |
| Insulating material group | I     | Surface finish                   | untreated |
| Basic material            | PA 66 | Comparative Tracking Index (CTI) | 600 ≤ CTI |

### General data

|                        |          |                      |      |
|------------------------|----------|----------------------|------|
| Colour                 | orange   | Protection degree    | IP00 |
| Colour chart (similar) | RAL 2000 | Encapsulation option | No   |

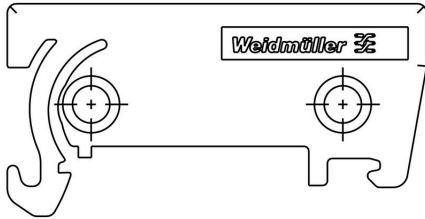
### Important note

|                     |  |
|---------------------|--|
| Product information | The article will soon no longer be available. Please do not carry out any further design-ins. The RS 70 and RS 100 profile series can be used as an alternative. |
|---------------------|--|

### Classifications

|             |             |             |             |
|-------------|-------------|-------------|-------------|
| ETIM 8.0    | EC001031    | ETIM 9.0    | EC002779    |
| ETIM 10.0   | EC002779    | ECLASS 14.0 | 27-19-06-02 |
| ECLASS 15.0 | 27-19-06-02 |             |             |

Drawings



RAIL MOUNTING

