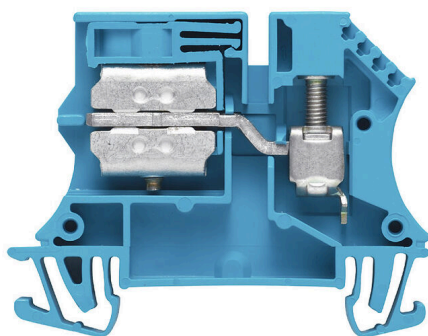


WNT 6 10X3**Weidmüller Interface GmbH & Co. KG**

Klingenbergstraße 26

D-32758 Detmold

Germany

www.weidmueller.com**Product image****Building installation wiring**

For building installations, we offer a complete system that revolves around the 10×3 copper rail and comprises perfectly coordinated components: from installation terminal blocks, neutral conductor terminal blocks and distribution terminal blocks to comprehensive accessories such as busbars and busbar holders.

General ordering data

| | |
|------------|---|
| Version | Neutral conductor modular terminal, Screw connection, 6, 400 V, 41 A, TS 35, blue |
| Order No. | 1010880000 |
| Type | WNT 6 10X3 |
| GTIN (EAN) | 4008190105969 |
| Qty. | 50 items |

Technical data

Approvals

Approvals



| | |
|-----------------------|----------------------------|
| ROHS | Conform |
| UL File Number Search | UL Website |
| Certificate No. (UR) | E60693 |

Dimensions and weights

| | | | |
|--------------------------|-------------|----------------|-------------|
| Depth | 46.5 mm | Depth (inches) | 1.8307 inch |
| Depth including DIN rail | 47 mm | Height | 60 mm |
| Height (inches) | 2.3622 inch | Width | 7.9 mm |
| Width (inches) | 0.311 inch | Net weight | 18.02 g |

Temperatures

| | | | |
|----------------------------------|----------------|----------------------------------|----------------|
| Storage temperature | -25 °C...55 °C | Ambient temperature | -50 °C...75 °C |
| Continuous operating temp., min. | -50 °C | Continuous operating temp., max. | 120 °C |

Environmental Product Compliance

| | |
|------------------------|-----------------------------|
| RoHS Compliance Status | Compliant without exemption |
| REACH SVHC | No SVHC above 0.1 wt% |

Material data

| | | | |
|---------------------------|-------|--------|------|
| Basic material | Wemid | Colour | blue |
| UL 94 flammability rating | V-0 | | |

System specifications

| | | | |
|-------------------------------------|--|-------------------------------|-----|
| Version | Screw connection, with busbar connection 10x3, One end without connector | End cover plate required | Yes |
| Number of potentials | 1 | Number of levels | 1 |
| Number of clamping points per level | 1 | Number of potentials per tier | 1 |
| Levels cross-connected internally | No | PE connection | No |
| Mounting rail | TS 35 | N-function | Yes |
| PE function | No | PEN function | No |

Additional technical data

| | | | |
|---------------------|---------|-----------------------------|----|
| Open sides | right | Number of similar terminals | 1 |
| Installation advice | Busbar | Explosion-tested version | No |
| Type of mounting | Snap-on | | |

WNT 6 10X3

Weidmüller Interface GmbH & Co. KG

Klingenbergstraße 26

D-32758 Detmold

Germany

www.weidmueller.com

Technical data

CSA rating data

| | | | |
|-------------------------------|--------|-----------------------|----------------|
| Wire cross section max. (CSA) | 8 AWG | Voltage size C (CSA) | 600 V |
| Current size C (CSA) | 35 A | Certificate No. (CSA) | 200039-1057876 |
| Wire cross section min. (CSA) | 26 AWG | | |

Conductors for clamping (additional connection)

| | | | |
|---|-------------------|--|-------------------|
| Conductor cross-section, flexible plus plastic collar DIN 46228/1, further connection, max. | 6 mm ² | Connection type, additional connection | Busbar connection |
|---|-------------------|--|-------------------|

Conductors for clamping (rated connection)

| | | | |
|---|--|------------------|---------------------|
| Gauge to IEC 60947-1 | A5 | | |
| Wire connection cross section AWG, max. | AWG 8 | | |
| Connection direction | on side | | |
| Tightening torque, max. | 1.2 Nm | | |
| Tightening torque, min. | 0.8 Nm | | |
| Stripping length | 12 mm | | |
| Type of connection | Screw connection | | |
| Number of connections | 1 | | |
| Clamping range, max. | 10 mm ² | | |
| Clamping range, min. | 0.5 mm ² | | |
| Clamping screw | M 3.5 | | |
| Blade size | 4.0 x 0.8 mm | | |
| Wire connection cross section AWG, min. | AWG 20 | | |
| Wire connection cross-section, finely stranded with wire-end ferrules DIN 46228/4, max. | 6 mm ² | | |
| Wire connection cross-section, finely stranded with wire-end ferrules DIN 46228/4, min. | 0.5 mm ² | | |
| Wire connection cross-section, finely stranded with wire-end ferrules DIN 46228/1, max. | 6 mm ² | | |
| Wire connection cross-section, finely stranded with wire-end ferrules DIN 46228/1, min. | 0.5 mm ² | | |
| Wire connection cross section, finely stranded, max. | 10 mm ² | | |
| Wire connection cross section, finely stranded, min. | 0.5 mm ² | | |
| Connection cross-section, stranded, max. | 10 mm ² | | |
| Connection cross-section, stranded, min. | 0.5 mm ² | | |
| Torque level with DMS electric screwdriver | 3 | | |
| Wire connection cross-section, solid core, max. | 10 mm ² | | |
| Wire connection cross-section, solid core, min. | 0.5 mm ² | | |
| Clampable conductor | Connection specification | Screw connection | |
| | Cross-section for conductor connection | Type | solid, H05(07) V-U |
| | | min. | 0.5 mm ² |
| | | max. | 10 mm ² |
| | | nominal | 6 mm ² |
| | wire end ferrule | Stripping length | min. 12 mm |

Technical data

| | | | |
|--|-------------------|-----------------------|---------------|
| | | | max. 12 mm |
| | | | nominal 12 mm |
| | Tightening torque | min. 0.8 Nm | |
| | | max. 1.2 Nm | |
| Connection specification | Screw connection | | |
| Cross-section for conductor connection | Type | stranded, H07V-R | |
| | min. | 1.5 mm ² | |
| | max. | 10 mm ² | |
| | nominal | 6 mm ² | |
| wire end ferrule | Stripping length | min. 12 mm | |
| | | max. 12 mm | |
| | | nominal 12 mm | |
| | Tightening torque | min. 0.8 Nm | |
| | | max. 1.2 Nm | |
| Connection specification | Screw connection | | |
| Cross-section for conductor connection | Type | flexible, H05(07) V-K | |
| | min. | 0.5 mm ² | |
| | max. | 10 mm ² | |
| | nominal | 6 mm ² | |
| wire end ferrule | Stripping length | min. 12 mm | |
| | | max. 12 mm | |
| | | nominal 12 mm | |
| | Tightening torque | min. 0.8 Nm | |
| | | max. 1.2 Nm | |

General

| | | | |
|---|--------|---------------------|----------------------------------|
| Wire connection cross section AWG, max. | AWG 8 | Installation advice | Busbar |
| Wire connection cross section AWG, min. | AWG 20 | Standards | In accordance with IEC 60947-7-1 |
| Mounting rail | TS 35 | | |

Rating data

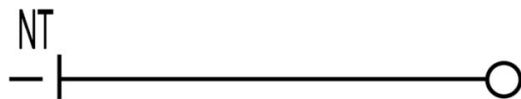
| | | | |
|--|-------------------|---------------------------------|----------------------------------|
| Rated cross-section | 6 mm ² | Rated voltage | 400 V |
| Rated DC voltage | 400 V | Nominal current | 41 A |
| Current at maximum wires | 57 A | Standards | In accordance with IEC 60947-7-1 |
| Volume resistance according to IEC 60947-7-x | 0.78 mΩ | Rated impulse withstand voltage | 6 kV |
| Power loss in accordance with IEC 60947-7-x | 1.31 W | Pollution severity | 3 |

UL rating data

| | | | |
|---|--------|---|--------|
| Conductor size Factory wiring max. (UR) | 8 AWG | Current size C (UR) | 45 A |
| Voltage size C (UR) | 600 V | Conductor size Factory wiring min. (UR) | 20 AWG |
| Certificate No. (UR) | E60693 | Conductor size Field wiring min. (UR) | 20 AWG |
| Conductor size Field wiring max. (UR) | 8 AWG | | |

Classifications

| | | | |
|-------------|-------------|-------------|-------------|
| ETIM 8.0 | EC000897 | ETIM 9.0 | EC000897 |
| ETIM 10.0 | EC000897 | ECLASS 14.0 | 27-25-01-11 |
| ECLASS 15.0 | 27-25-01-11 | | |



WNT 6 10X3

Weidmüller Interface GmbH & Co. KG

Klingenbergstraße 26

D-32758 Detmold

Germany

www.weidmueller.com

Accessories

End plates and partition plates

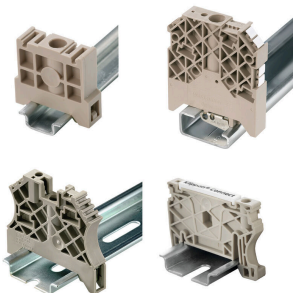


Partition plates and end plates are essential accessories for terminal blocks. Partition plates provide optical and electrical separation of different potentials and functional groups, increasing safety and ensuring a clear structure inside the control cabinet. End plates close the terminal block row on the sides, protect against contact with live parts, and ensure a clean, stable finish. Both components are precisely matched to the respective Weidmüller terminal block series, contributing to safe, compliant, and professional wiring.

General ordering data

| | | |
|------------|----------------------------|--|
| Type | WAP 2.5-10 | Version |
| Order No. | 1050000000 | End plate for terminals, dark beige, Height: 56 mm, Width: 1.5 mm, |
| GTIN (EAN) | 4008190103149 | V-0, Wemid, Snap-on: No |
| Qty. | 50 ST | |
| Type | WAP 2.5-10 BL | Version |
| Order No. | 1050080000 | End plate for terminals, blue, Height: 56 mm, Width: 1.5 mm, V-0, |
| GTIN (EAN) | 4008190136611 | Wemid, Snap-on: No |
| Qty. | 50 ST | |
| Type | WHP 2.5-35N/10X3 BL | Version |
| Order No. | 1050280000 | End and partition plate for terminals, blue, Height: 60 mm, Width: 2 |
| GTIN (EAN) | 4008190044640 | mm, V-0, Wemid |
| Qty. | 20 ST | |

End bracket



Weidmüller's range of products includes end brackets that guarantee a permanent, reliable mounting on the terminal rail and prevent sliding. Versions with and without screws are available. The end brackets include marking options, also for group markers, and also a test plug holder.

General ordering data

| | | |
|------------|----------------------------|--|
| Type | WEW 35/2 | Version |
| Order No. | 1061200000 | End bracket, dark beige, TS 35, HB, Wemid, Width: 8 mm, 100 °C |
| GTIN (EAN) | 4008190030230 | |
| Qty. | 50 ST | |

Accessories

Combined screwing and cutting tool "Swiftly® CS"

Combined cutting/stripping tool Swiftly® CS and Swiftly® CS set for crimp-free cutting and stripping of copper cables up to 1.5 mm² solid and 2.5 mm² flexible.



General ordering data

| | | |
|------------|----------------------------|--|
| Type | SWIFTY CS SET | Version |
| Order No. | 9006060000 | Cutting and screwing-tool, Cutting tool for one-hand operation |
| GTIN (EAN) | 4032248257638 | |
| Qty. | 1 ST | |

Slotted screwdriver



Slotted screwdriver with rounded blade SD DIN 5265, ISO 2380/2, output to DIN 5264, ISO 2380/1. ChromTop tip, SoftFinish grip

General ordering data

| | | |
|------------|----------------------------|--------------------------|
| Type | SDS 0.6X3.5X100 | Version |
| Order No. | 9008330000 | Screwdriver, Screwdriver |
| GTIN (EAN) | 4032248056286 | |
| Qty. | 1 ST | |

Busbars



With our bus bars in various materials and the associated accessories, you can connect cables in the smallest installation space. Depending on the application, potentials can be collected, distributed or dissipated.

General ordering data

| | | |
|------------|----------------------------|---|
| Type | SSCH 10X3X1000 CU/SN | Version |
| Order No. | 0348900000 | Busbar (terminal), silver, Height: 1000 mm, Depth: 3 mm, Copper |
| GTIN (EAN) | 4008190024802 | |
| Qty. | 25 M | |

Accessories

Blank



WS markers are the perfect match for the W-series connectors. Thanks to their system compatibility, the WS tags can also be used with the I-series and the Z-series. The large marking surfaces do not only permit long character strings but also multi-line text. WS markers are ideal for labels with long, customised character strings. Thanks to the proven MultiCard format, printing with PrintJet CONNECT oder/or Plotter is possible.

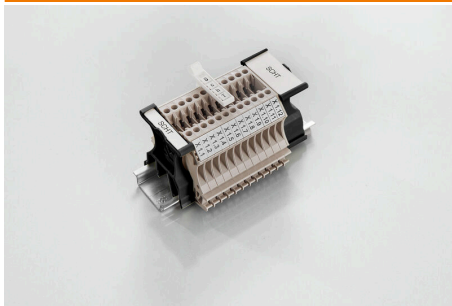
- Can be fitted in strips or individually
- Markers in proven MultiCard format

For custom printing: Please send us a file of our labeling software M-Print PRO or M-Print PRO Online (without installation) for your labeling specifications.

General ordering data

| | | |
|------------|----------------------------|--|
| Type | WS 12/5 MC NE WS | Version |
| Order No. | 1609860000 | WS, Terminal marker, 12 x 5 mm, Pitch in mm (P): 5.00 Weidmueller, |
| GTIN (EAN) | 4008190203481 | Allen-Bradley, white |
| Qty. | 720 ST | |

SchT group marker carrier



The SchT 5 S group tag carriers are clipped directly onto the TS 32 mounting rail (G-rail) or the TS 35 mounting rail (top-hat rail). It is therefore possible to label the terminal strip irrespective of the terminal and the type of terminal. SchT 5 and SchT 5 S are fitted with ESO 5, STR 5 protective strips.

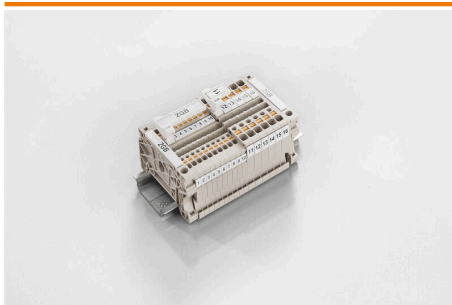
The SchT 7 is a hinged group tag carrier for inlay tags which enables easy access to the clamping screw. The SchT 7 is fitted with ESO 7, STR 7 protective strips or DEK 5.

Inlay tags and protective strips can be found under "Accessories".

General ordering data

| | | |
|------------|----------------------------|---|
| Type | SCHT 7 | Version |
| Order No. | 0517960000 | SCHT, Terminal marker, 39.3 x 8 mm, Pitch in mm (P): 7.00 |
| GTIN (EAN) | 4008190001742 | Weidmueller, white |
| Qty. | 20 ST | |

ZGB pivotable group tag holder



The ZGB 15 is a hinged group tag carrier. The tag carrier can hold the dekafix 5, WS 12/5 terminal markers or the inlay tag ESO 15.

The ZGB 30 is a hinged group tag carrier. The tag carrier can hold the dekafix 5, WS 12/5 terminal markers or the inlay tag ESO 7.

Inlay tags and protective strips can be found under "Accessories".

WNT 6 10X3

Weidmüller Interface GmbH & Co. KG

Klingenbergstraße 26

D-32758 Detmold

Germany

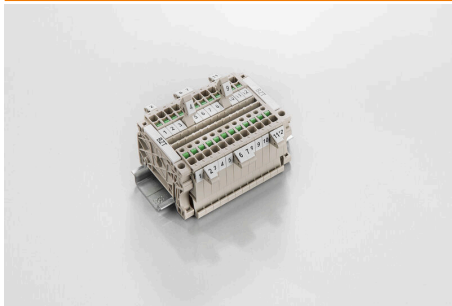
www.weidmueller.com

Accessories

General ordering data

| | | |
|------------|----------------------------|---|
| Type | ZGB 15 | Version |
| Order No. | 1636530000 | Terminal markers, Terminal marker, 15 x 7 mm, Pitch in mm (P): 5.00 |
| GTIN (EAN) | 4008190297053 | Weidmueller, white |
| Qty. | 20 ST | |
| Type | ZGB 30 | Version |
| Order No. | 1611930000 | Terminal markers, Terminal marker, 32 x 7 mm, Pitch in mm (P): 5.00 |
| GTIN (EAN) | 4008190002251 | Weidmueller, white |
| Qty. | 20 ST | |

Marker holder



The marker holder offer the possibility of additional mounting of standard markers with a pitch of 5 or 5.1 mm. The angled holders can be optionally snapped together and could be mounted in all standard marking channels of the Klippon® Connect modular terminal blocks. Fitting marker types could be found under the respective accessories of the designation marking holder.

General ordering data

| | | |
|------------|----------------------------|----------------------------|
| Type | BZT 1 WS 10/5 | Version |
| Order No. | 1805490000 | Accessories, Marker holder |
| GTIN (EAN) | 4032248270231 | |
| Qty. | 100 ST | |
| Type | BZT 1 ZA WS 10/5 | Version |
| Order No. | 1805520000 | Accessories, Marker holder |
| GTIN (EAN) | 4032248270248 | |
| Qty. | 100 ST | |

WS 12/5



WS/ DEK

MultiMark terminal markers use an innovative composite material made from two components. The hard base contour of the marker snaps securely into the connector. The elastic surface finish makes the marker easy to mount. This specially punched material enables the strips to be stretched to accommodate the slight variations in spacing that tend to add up, especially with long terminal blocks. Another advantage: the excellent printability of the surface material guarantees durable and wear-resistant labelling. A print resolution of 300 dpi also produces a very legible script.

Your benefits with MultiMark

- Firm hold and durable printing
- Continuous strips save installation time
- Easy mounting thanks to an innovative composite material
- Large label field for optimal legibility
- High flexibility thanks to manufacturer independence

WNT 6 10X3**Weidmüller Interface GmbH & Co. KG**Klingenbergstraße 26
D-32758 Detmold
Germanywww.weidmueller.com**Accessories****General ordering data**

| | | |
|------------|----------------------------|--|
| Type | WS 12/5 MM WS | Version |
| Order No. | 2007190000 | WS, Terminal marker, 12 x 5 mm, Weidmueller, white |
| GTIN (EAN) | 4050118392036 | |
| Qty. | 800 ST | |

End plates and partition plates

Partition plates and end plates are essential accessories for terminal blocks. Partition plates provide optical and electrical separation of different potentials and functional groups, increasing safety and ensuring a clear structure inside the control cabinet. End plates close the terminal block row on the sides, protect against contact with live parts, and ensure a clean, stable finish. Both components are precisely matched to the respective Weidmüller terminal block series, contributing to safe, compliant, and professional wiring.

General ordering data

| | | |
|------------|----------------------------|---|
| Type | WTW 2.5-10 S | Version |
| Order No. | 1266520000 | Partition plate (terminal), dark beige, Height: 56 mm, Width: 1.5 mm, |
| GTIN (EAN) | 4050118092585 | V-0, Wemid |
| Qty. | 20 ST | |