

PTDS 4 DC**Weidmüller Interface GmbH & Co. KG**Klingenbergstraße 26
D-32758 Detmold
Germany

www.weidmueller.com



Power distribution using uncut cables with cross-sections from 1.5 to 6 mm².

Power supply / T-branch tap via PUSH IN connection (0.5 to 10 mm²) and/or plug-in connection (0.5 to 4 mm²).

Coloured markings provide clear assignment of wires.

- Power supply
- Power distribution
- Power branching

General ordering data

Version	Field Power® plug-in connector, DC, IP20, Polyamide, PUSH IN, Number of poles : 2 x 5
Order No.	1009990000
Type	PTDS 4 DC
GTIN (EAN)	4032248715244
Qty.	10 items

PTDS 4 DC

Weidmüller Interface GmbH & Co. KG

Klingenbergstraße 26
D-32758 Detmold
Germany

www.weidmueller.com

Technical data

Approvals

Approvals



ROHS Conform

UL File Number Search [UL Website](#)

Certificate No. (cURus) E60693

Dimensions and weights

Depth	36.15 mm	Depth (inches)	1.4232 inch
Height	27.3 mm	Height (inches)	1.0748 inch
Width	55.45 mm	Width (inches)	2.1831 inch
Net weight	46.4 g		

Temperatures

Storage temperature	-40 °C...85 °C	Operating temperature	-40 °C...80 °C
---------------------	----------------	-----------------------	----------------

Environmental Product Compliance

RoHS Compliance Status Compliant without exemption

REACH SVHC No SVHC above 0.1 wt%

Approbations

Certificate No. (cURus)	E60693	Institute (cURus)	CURUS
-------------------------	--------	-------------------	-------

Clamping capacity, PUSH IN connection

Clamping range, max. PUSH IN connection	4 mm ²	Clamping range, min. PUSH IN connection	0.5 mm ²
Blade size, PUSH IN connection	3.0 x 0.5 mm	Stripping length, PUSH IN connection	12 mm
Finely-stranded flexible, max. PUSH IN connection	4.00 mm ²	Finely-stranded flexible, min. PUSH IN connection	0.50 mm ²
Cross-section for connected wire, flexible with wire-end ferrules, 12mm with plastic collar, DIN 46228/4, PUSH IN connection, min.	0.5 mm ²	Cross-section for connected wire, flexible, PUSH IN connection, max.	4 mm ²
Cross-section for connected wire, PUSH IN connection, solid, max.	4 mm ²	Cross-section for connected wire, flexible with wire-end ferrules, 8mm with plastic collar, DIN 46228/1, PUSH IN connection, max.	4.00 mm ²
Cross-section for connected wire, flexible, PUSH IN connection, min.	0.5 mm ²	Cross-section for connected wire, flexible with wire-end ferrules, 12mm with plastic collar, DIN 46228/1, PUSH IN connection, max.	4.00 mm ²
Cross-section for connected wire PUSH IN connection, solid, min.	0.5 mm ²	Cross-section for connected wire, flexible with wire-end ferrules, 8mm with plastic collar, DIN 46228/1, PUSH IN connection, min.	0.50 mm ²
Cross-section for connected wire, flexible with wire-end ferrules, 12mm with plastic collar, DIN 46228/4, PUSH IN connection, max.	4 mm ²	Wire connection cross section, stranded, PUSH IN connection, min.	0.5 mm ²
Cross-section for connected wire, flexible with wire-end ferrules, 8mm with	4.00 mm ²	Cross-section for connected wire, flexible with wire-end ferrules, 8mm with	0.50 mm ²

PTDS 4 DC

Weidmüller Interface GmbH & Co. KG

Klingenbergstraße 26
D-32758 Detmold
Germany

www.weidmueller.com

Technical data

plastic collar, DIN 46228/4, PUSH IN connection, max.

Cross-section for connected wire, flexible 0.50 mm² with wire-end ferrules, 12mm with plastic collar, DIN 46228/1, PUSH IN connection, min.

plastic collar, DIN 46228/4, PUSH IN connection, min.

Wire connection cross section, stranded, 4 mm² PUSH IN connection, max.

Clamping capacity

Connection data - plug-in connector

Wire connection method	PUSH IN	
Blade size of operating tool	3.0 x 0.5 mm	
Stripping length	12.00 mm	
Number of poles	5	
Conductor connection cross-section, solid, max.	4 mm ²	
Conductor connection cross-section, solid, min.	0.50 mm ²	
Conductor connection cross-section, stranded, max.	4.00 mm ²	
Conductor connection cross-section, stranded, min.	0.50 mm ²	
Conductor connection cross-section, finely stranded, max.	4.00 mm ²	
Conductor connection cross-section, finely stranded, min.	0.50 mm ²	
Conductor connection cross-section, finest stranded, max.	4.00 mm ²	
Conductor connection cross-section, finest stranded, min.	0.50 mm ²	
Conductor connection cross-section with wire end ferrule	Type of wire end ferrule	12 mm with plastic collar
	Standard	DIN 46228/1
	Cross-section, min.	0.5 mm ²
	Cross-section, max.	4 mm ²
	Type of wire end ferrule	12 mm with plastic collar
	Standard	DIN 46228/4
	Cross-section, min.	0.5 mm ²
	Cross-section, max.	4 mm ²
	Type of wire end ferrule	8 mm with plastic collar
	Standard	DIN 46228/1
	Cross-section, min.	0.5 mm ²
	Cross-section, max.	4 mm ²
	Type of wire end ferrule	8 mm with plastic collar
	Standard	DIN 46228/4
	Cross-section, min.	0.5 mm ²
	Cross-section, max.	4 mm ²
	Type of wire end ferrule	Twin wire-end ferrules
	Cross-section, min.	0.5 mm ²
	Cross-section, max.	4 mm ²

General data

Insulating material	Polyamide	Silicone	No
Colour	black	Protection degree	IP20
UL 94 flammability rating	V-0	Type of mounting	Plugged
Can be coded	Yes, Coded on PE	Test point	2 mm
Voltage type	DC	Number of poles	2 x 5
Number of connections / pole	2	Wire connection method	PUSH IN

PTDS 4 DC

Weidmüller Interface GmbH & Co. KG

Klingenbergstraße 26
D-32758 Detmold
Germany

www.weidmueller.com

Technical data

Conductor outlet direction 90°

Rated data acc. to IEC

Rated data acc. to IEC for plug-in connector	Voltage type	DC
	Standard	IEC 60947-7-1, IEC 60947-7-2, IEC 61984
	Rated voltage	690 V
	Rated impulse withstand voltage	8.00 kV
	Rated current (3 loaded poles)	32 A
	Rated current (4 loaded poles)	25 A

Rated data acc. to UL

Rated data acc. to UL for plug-in connector	Standard	UL 1059
	Note	for use with UL-listed TC-ER cables
	Conductor connection cross-section, AWG, max.	AWG 12
	Conductor connection cross-section, AWG, min.	AWG 16
	Rated voltage	600 V
	Rated current	20 A

Classifications

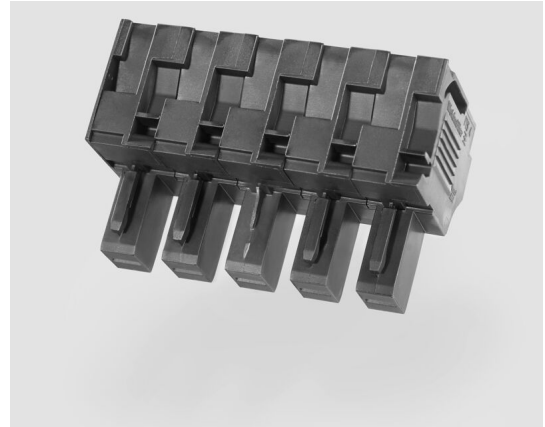
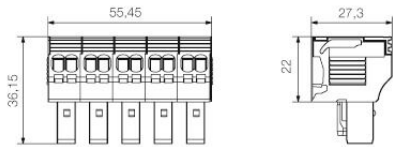
ETIM 8.0	EC002943	ETIM 9.0	EC002943
ETIM 10.0	EC002943	ECLASS 14.0	27-44-02-92
ECLASS 15.0	27-44-02-92		

PTDS 4 DC

Weidmüller Interface GmbH & Co. KG
Klingenbergstraße 26
D-32758 Detmold
Germany

Drawings

www.weidmueller.com



PTDS 4 DC

Weidmüller Interface GmbH & Co. KG
 Klingenbergstraße 26
 D-32758 Detmold
 Germany

www.weidmueller.com

Accessories

Tools



Sheathing stripper for PVC cables

General ordering data

Type	AM 16	Version	
Order No.	9204190000	Tools, Sheathing strippers	
GTIN (EAN)	4032248608133		
Qty.	1 ST		

Type	AM 25	Version	
Order No.	9001540000	Tools, Sheathing strippers	
GTIN (EAN)	4008190138271		
Qty.	1 ST		

Plugs



The plugs for our WeiCoS-System are available for all different connection systems. The product range includes preassembled connectors from 1 to 10 poles and the possibility of an individual assembly. This ensures maximum flexibility for every application. The customized accessories increase the safety and protection against environmental influences.

General ordering data

Type	ZVR ZP2.5	Version	
Order No.	1816130000	Z-series, Locking clips, yellow, 3.9 mm	
GTIN (EAN)	4032248370702		
Qty.	25 ST		

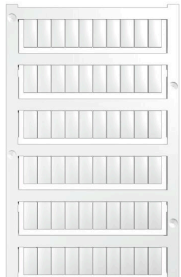
PTDS 4 DC

Weidmüller Interface GmbH & Co. KG
 Klingenbergstraße 26
 D-32758 Detmold
 Germany

www.weidmueller.com

Accessories

Blank



WS markers are the perfect match for the W-series connectors. Thanks to their system compatibility, the WS tags can also be used with the I-series and the Z-series. The large marking surfaces do not only permit long character strings but also multi-line text. WS markers are ideal for labels with long, customised character strings. Thanks to the proven MultiCard format, printing with PrintJet CONNECT oder/or Plotter is possible.

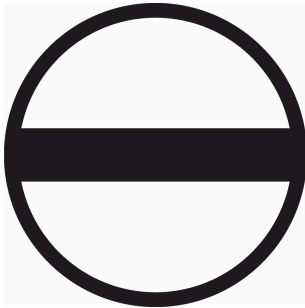
- Can be fitted in strips or individually
- Markers in proven MultiCard format

For custom printing: Please send us a file of our labeling software M-Print PRO or M-Print PRO Online (without installation) for your labeling specifications.

General ordering data

Type	WS 12/6 MC NE WS	Version
Order No.	1609900000	WS, Terminal marker, 12 x 6 mm, Pitch in mm (P): 6.00 Weidmueller,
GTIN (EAN)	4008190203467	Allen-Bradley, white
Qty.	600 ST	

Slotted screwdriver



Slotted screwdriver with rounded blade SD DIN 5265, ISO 2380/2, output to DIN 5264, ISO 2380/1. ChromTop tip, SoftFinish grip

General ordering data

Type	SDS 0.5X3.0X80	Version
Order No.	2749330000	Screwdriver, Blade width (B): 3 mm, Blade length: 80 mm, Blade
GTIN (EAN)	4050118895551	thickness (A): 0.5 mm
Qty.	1 ST	