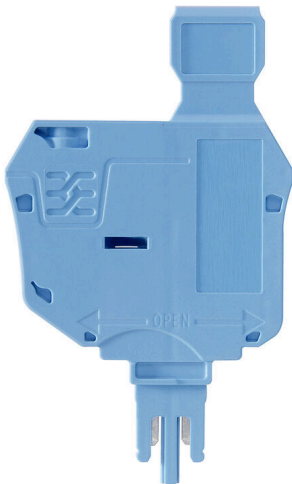


SIHA 3/G20 BL

Weidmüller Interface GmbH & Co. KG
Klingenbergstraße 26
D-32758 Detmold
Germany

www.weidmueller.com

Product image

The fuse holder SIHA quickly turns a disconnect terminal into a fuse terminal: simply remove the disconnect lever and attach the fuse unit.

General ordering data

Version	Fuse holder for feed-through modular terminal, blue, 6.3 A, pluggable, V-0, Wemid
Order No.	1004260000
Type	SIHA 3/G20 BL
GTIN (EAN)	4032248709717
Qty.	25 items

SIHA 3/G20 BL

Weidmüller Interface GmbH & Co. KG
 Klingenbergstraße 26
 D-32758 Detmold
 Germany

www.weidmueller.com

Technical data

Approvals

ROHS	Conform
------	---------

Dimensions and weights

Depth	45.69 mm	Depth (inches)	1.7988 inch
Height	33.38 mm	Height (inches)	1.3142 inch
Width	6 mm	Width (inches)	0.2362 inch
Net weight	7.6 g		

Temperatures

Ambient temperature	-5 °C...40 °C	Continuous operating temp., min.	-50 °C
Continuous operating temp., max.	120 °C		

Environmental Product Compliance

RoHS Compliance Status	Compliant without exemption
REACH SVHC	No SVHC above 0.1 wt%

Material data

Basic material	Wemid	Colour	blue
UL 94 flammability rating	V-0		

System specifications

Version	Fuse cartridge
---------	----------------

Additional technical data

Installation advice	Operating instructions/ catalogue	Type of mounting	Plugged
---------------------	--------------------------------------	------------------	---------

General

Installation advice	Operating instructions/ catalogue	Operating temperature range, max.	120 °C
---------------------	--------------------------------------	-----------------------------------	--------

Classifications

ETIM 8.0	EC002848	ETIM 9.0	EC002848
ETIM 10.0	EC002848	ECLASS 14.0	27-25-03-90
ECLASS 15.0	27-25-03-90		

Drawings

