

HDC HE CP

Weidmüller Interface GmbH & Co. KG

Klingenbergstraße 26

D-32758 Detmold

Germany

www.weidmueller.com



Various accessories are available for our inserts. This includes coding elements for the inserts.

General ordering data

Version	Heavy-duty connectors, Accessories, Coding System
Order No.	1003240000
Type	HDC HE CP
GTIN (EAN)	4032248698233
Qty.	100 items

HDC HE CP**Weidmüller Interface GmbH & Co. KG**

Klingenbergstraße 26

D-32758 Detmold

Germany

www.weidmueller.com**Technical data****Approvals**

ROHS	Conform
------	---------

Dimensions and weights

Net weight	0.42 g
------------	--------

Environmental Product Compliance

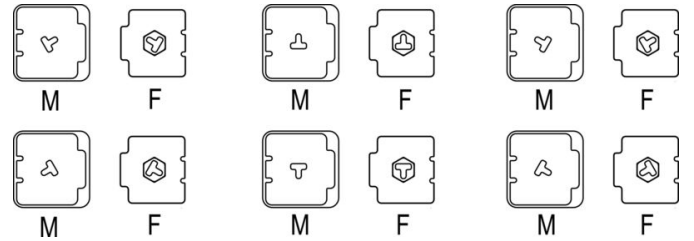
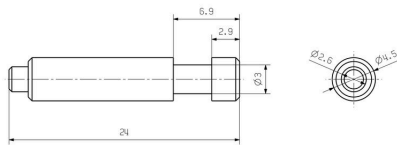
RoHS Compliance Status	Compliant without exemption
REACH SVHC	Potassium perfluorobutane sulfonate 29420-49-3
SCIP	2f94735a-9fba-4903-842f-4fb9aa902310

Classifications

ETIM 8.0	EC002311	ETIM 9.0	EC002311
ETIM 10.0	EC002311	ECLASS 14.0	27-44-02-03
ECLASS 15.0	27-44-02-03		

Drawings

Drawing



Coding scheme

HDC HE CP

Weidmüller Interface GmbH & Co. KG

Klingenbergstraße 26

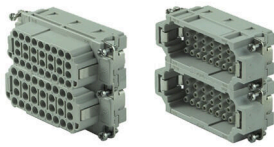
D-32758 Detmold

Germany

www.weidmueller.com

Accessories

Size 10

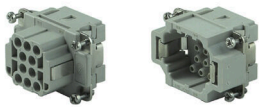


The HEE series features high-density contacts and is designed on the basis of the established HE inserts. The wire connection level is designed for crimp contacts. The proven crimp connection method has been in standard use for decades. Crimp contacts are not included in the scope of delivery of inserts.

General ordering data

Type	HDC HEE 32 FC 33-64	Version	
Order No.	1018960000	HDC insert, Female, 500 V, 16 A, Number of poles: 32, Crimp connection, Installation size: 6	
GTIN (EAN)	4032248730261		
Qty.	1 ST		
Type	HDC HEE 32 MC 33-64	Version	
Order No.	1018950000	HDC insert, Male, 500 V, 16 A, Number of poles: 32, Crimp connection, Installation size: 6	
GTIN (EAN)	4032248730254		
Qty.	1 ST		

Size 3



The HEE series features high-density contacts and is designed based on the established HE inserts. The wire connection level is designed as a crimp contact. The established crimp connection has been used as a standard for decades. Crimp contacts are not delivered with the inserts.
 Number of poles: 10
 Rated current: 16 A
 Rated voltage: 500 V
 Nominal voltage acc. to UL/CSA: 600 V AC/DC

General ordering data

Type	HDC HEE 10 MC	Version	
Order No.	1826830000	HDC insert, Male, 500 V, 16 A, Number of poles: 10, Crimp connection, Installation size: 3	
GTIN (EAN)	4032248330232		
Qty.	1 ST		

Size 4



The HEE series features high-density contacts and is designed based on the established HE inserts. The wire connection level is designed as a crimp contact. The established crimp connection has been used as a standard for decades. Crimp contacts are not delivered with the inserts.
 Number of poles: 18
 Rated current: 16 A
 Rated voltage: 500 V
 Nominal voltage acc. to UL/CSA: 600 V AC/DC

HDC HE CP

Weidmüller Interface GmbH & Co. KG

Klingenbergstraße 26

D-32758 Detmold

Germany

www.weidmueller.com

Accessories

General ordering data

Type	HDC HEE 18 MC	Version	
Order No.	1826810000	HDC insert, Male, 500 V, 16 A, Number of poles: 18, Crimp connection, Installation size: 4	
GTIN (EAN)	4032248330218		
Qty.	1 ST		

Size 6



The HEE series features high-density contacts and is designed based on the established HE inserts. The wire connection level is designed as a crimp contact. The established crimp connection has been used as a standard for decades. Crimp contacts are not delivered with the inserts.

Number of poles: 32

Rated current: 16 A

Rated voltage: 500 V

Nominal voltage acc. to UL/CSA: 600 V AC/DC

General ordering data

Type	HDC HEE 32 MC	Version	
Order No.	1826790000	HDC insert, Male, 500 V, 16 A, Number of poles: 32, Crimp connection, Installation size: 6	
GTIN (EAN)	4032248330195		
Qty.	1 ST		

Size 8



The HEE series features high-density contacts and is designed based on the established HE inserts. The wire connection level is designed as a crimp contact. The established crimp connection has been used as a standard for decades. Crimp contacts are not delivered with the inserts.

Number of poles: 46

Rated current: 16 A

Rated voltage: 500 V

Nominal voltage acc. to UL/CSA: 600 V AC/DC

General ordering data

Type	HDC HEE 46 MC	Version	
Order No.	1826770000	HDC insert, Male, 500 V, 16 A, Number of poles: 46, Crimp connection, Installation size: 8	
GTIN (EAN)	4032248330171		
Qty.	1 ST		

HDC HE CP

Weidmüller Interface GmbH & Co. KG

Klingenbergstraße 26

D-32758 Detmold

Germany

www.weidmueller.com

Accessories

Size 6

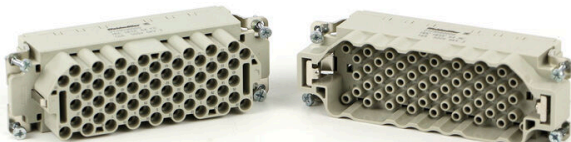


A heavy-duty connector consists of a connector insert and its protective housing. The insert is therefore the heart of the heavy-duty connector. It is responsible for electrical functioning. Connector inserts from Weidmüller are made from high-quality insulation materials, which allow secure transmission of high voltages in a tight space. Moreover, we use only a single type of plastic in our entire product line. This plastic is UL listed, and suitable for railway applications. This allows unlimited world-wide use of the RockStar® connector.

General ordering data

Type	HDC HEEE 40 FC	Version
Order No.	1528380000	HDC insert, Female, 500 V, 16 A, Number of poles: 40, Crimp connection, Installation size: 6
GTIN (EAN)	4050118374285	
Qty.	1 ST	
Type	HDC HEEE 40 MC	Version
Order No.	1528370000	HDC insert, Pin, Male, 500 V, 16 A, Number of poles: 40, Crimp connection, Installation size: 6
GTIN (EAN)	4050118374292	
Qty.	1 ST	

Size 8



General ordering data

Type	HDC HEEE 64 MC	Version
Order No.	2729580000	HDC insert, Male, 500 V, 16 A, Number of poles: 64, Crimp connection, Installation size: 8
GTIN (EAN)	4064675010449	
Qty.	1 ST	

5-pole



A small unit that packs a big punch. The electrical values speak for themselves. Proven HE crimp contacts can also be used here.

Number of poles: 5 (+PE)

Rated current: 16 A

Rated voltage: 250 V

Rated voltage acc. to UL/CSA: 600 V AC/DC

HDC HE CP

Weidmüller Interface GmbH & Co. KG
 Klingenbergstraße 26
 D-32758 Detmold
 Germany

www.weidmueller.com

Accessories

General ordering data

Type	HDC HQ 5 FC	Version
Order No.	1912460000	HDC insert, Female, 230 V, 20 A, Number of poles: 5, Crimp connection, Installation size: 1
GTIN (EAN)	4032248542055	
Qty.	1 ST	
Type	HDC HQ 5 MC	Version
Order No.	1912440000	HDC insert, Male, 230 V, 20 A, Number of poles: 5, Crimp connection, Installation size: 1
GTIN (EAN)	4032248542031	
Qty.	1 ST	

8-pole



A small size but quite big. The electrical values speak for themselves. Proven HE crimp contacts can also be used here.

Pole count: 8 (+PE)

Rated current: 16 A

Rated voltage: 500 V

Nominal voltage acc. to UL/CSA: 600 V AC/DC

General ordering data

Type	HDC HQ 8 FC	Version
Order No.	1919980000	HDC insert, Female, 500 V, 16 A, Number of poles: 8, Crimp connection, Installation size: HQ
GTIN (EAN)	4032248557950	
Qty.	1 ST	
Type	HDC HQ 8 MC	Version
Order No.	1919970000	HDC insert, Male, 500 V, 16 A, Number of poles: 8, Crimp connection, Installation size: HQ
GTIN (EAN)	4032248557943	
Qty.	1 ST	