

HDC HQ 17 FC

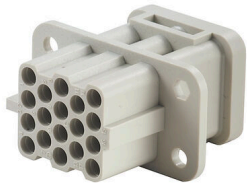
Weidmüller Interface GmbH & Co. KG

Klingenbergstraße 26

D-32758 Detmold

Germany

www.weidmueller.com



The HQ series - big features in a compact design The electrical values speak for themselves. The standard HE crimp contacts can also be used here.

The wire connection level is designed as a crimp contact The established crimp connection has been used as a standard for decades.

Crimp contacts are not delivered with the inserts.

Pole count: 17 (+PE)

Rated current: 10 A

Rated voltage 250 V

Nominal voltage acc. to UL/CSA: 600 V AC/DC

Crimp connection

General ordering data

Version	HDC insert, Female, 250 V, 10 A, Number of poles: 17, Crimp connection, Installation size: HQ
Order No.	1003200000
Type	HDC HQ 17 FC
GTIN (EAN)	4032248698196
Qty.	1 items

Technical data

Approvals

Approvals



ROHS	Conform
UL File Number Search	UL Website
Certificate No. (cURus)	E92202

Dimensions and weights

Depth	41.6 mm	Depth (inches)	1.6378 inch
Height	36.7 mm	Height (inches)	1.4449 inch
Width	22.4 mm	Width (inches)	0.8819 inch
Net weight	14 g		

Temperatures

Limit temperature	-40 °C ... 125 °C
-------------------	-------------------

Environmental Product Compliance

RoHS Compliance Status	Compliant without exemption
REACH SVHC	Potassium perfluorobutane sulfonate 29420-49-3
SCIP	1609748e-c278-4c9b-b3d1-e6215d2988cd

Chemical resistance	Substance	Acetone
	Chemical resistance	Resistant
	Substance	Ammonia, watery
	Chemical resistance	Conditionally resistant
	Substance	Petrol
	Chemical resistance	Resistant
	Substance	Benzene
	Chemical resistance	Resistant
	Substance	Diesel oil
	Chemical resistance	Conditionally resistant
	Substance	Acetic acid, concentrated
	Chemical resistance	Resistant
	Substance	Potassium hydroxide
	Chemical resistance	Conditionally resistant
	Substance	Methanol
	Chemical resistance	Conditionally resistant
	Substance	Motor oil
	Chemical resistance	Conditionally resistant
Substance	Lye, diluted	
Chemical resistance	Resistant	
Substance	Hydrochlorofluorocarbons	
Chemical resistance	Conditionally resistant	
Substance	Outdoor use	
Chemical resistance	Conditionally resistant	

Dimensions

Width	22.4 mm	Total length base	41.6 mm
Height of socket	36.7 mm		

HDC HQ 17 FC

Weidmüller Interface GmbH & Co. KG

Klingenbergstraße 26
D-32758 Detmold
Germany

www.weidmueller.com

Technical data

General data

Number of poles	17	Plugging cycles, silver	≥ 500
Plugging cycles, gold	≥ 500	Type of connection	Crimp connection
Installation size	HQ	UL 94 flammability rating	V-0
Volume resistance	≤4 mΩ	Colour	beige
Insulation resistance	1010 Ω	Insulating material	PC glass-fibre reinforced (UL-listed and railway-certified)
Insulating material group	IIIa	Type	Female
Pollution severity	2	Basic material	Copper alloy
Series	HQ	Rated voltage (DIN EN 61984)	250 V
Rated voltage according to UL/CSA	600 V AC/DC	Rated impulse voltage (DIN EN 61984)	4 kV
Rated current (DIN EN 61984)	10 A	Free from halogens	false
Low smoke acc. DIN EN 45545-2	Yes	BG	HQ

Connection data PE

Connection type PE	Crimp connection	Stripping length PE connection	8 mm
Rated cross-section	2.5 mm ²	Wire cross section, AWG (PE), min.	AWG 26
Wire cross section, AWG (PE), max.	AWG 14		

Version

Wire connection cross section AWG, max.	AWG 14	Stripping length, rated connection	8 mm
Type of connection	Crimp connection	Installation size	HQ
Volume resistance	≤4 mΩ	Wire connection cross section AWG, min.	AWG 26
Wire connection cross section, finely stranded, max.	2.5 mm ²	Wire connection cross section, finely stranded, min.	0.14 mm ²
Conductor cross-section, max.	2.5 mm ²	Conductor cross-section, min.	0.14 mm ²
Basic material	Copper alloy	BG	HQ

Classifications

ETIM 8.0	EC000438	ETIM 9.0	EC000438
ETIM 10.0	EC000438	ECLASS 14.0	27-44-02-05
ECLASS 15.0	27-44-02-05		

Accessories

Slotted screwdriver



VDE insulated slot-head screwdriver, SDI DIN 7437, ISO 2380/2, drive output acc. to DIN 5264, ISO 2380/1. SoftFinish grip

General ordering data

Type	SDIS 0.6X3.5X100	Version	
Order No.	9008390000	Screwdriver, Screwdriver	
GTIN (EAN)	4032248056354		
Qty.	1 ST		
Type	SDS 0.6X3.5X100	Version	
Order No.	9008330000	Screwdriver, Screwdriver	
GTIN (EAN)	4032248056286		
Qty.	1 ST		

Crosshead screwdriver Phillips



VDE insulated crosshead screwdriver, for Phillips screws, SDIK PH DIN 7438, ISO 8764/2-PH, output to ISO 8764-PH, SoftFinish grip

General ordering data

Type	SDIK PH0	Version	
Order No.	9008560000	Screwdriver, Screwdriver	
GTIN (EAN)	4032248056552		
Qty.	1 ST		
Type	SDK PH0	Version	
Order No.	9008470000	Screwdriver, Screwdriver	
GTIN (EAN)	4032248056460		
Qty.	1 ST		

HDC HQ 17 FC

Weidmüller Interface GmbH & Co. KG
 Klingenbergstraße 26
 D-32758 Detmold
 Germany

www.weidmueller.com

Accessories

Crimping tools



Crimping tools for turned contacts

- Ratchet guarantees precise crimping
- Release option in the event of incorrect operation
- With stop for exact positioning of the contacts.

General ordering data

Type	CTX CM 1.6/2.5	Version	
Order No.	9018490000	Pressing tool, Crimping tool for contacts, 0.14mm ² , 4mm ² , W crimp	
GTIN (EAN)	40081908884598		
Qty.	1 ST		

Type	CTIN CM 1.6/2.5	Version	
Order No.	9205430000	Pressing tool, Crimping tool for contacts, 0.14mm ² , 6mm ² , 4-indent crimp	
GTIN (EAN)	4032248733446		
Qty.	1 ST		

Contact removal tools



Weidmüller offers a variety of crimping tools, contact removal tools, and fibre optic tools.

General ordering data

Type	REMOVAL TOOL HD	Version	
Order No.	1866730000	Tools, Contact Removal Tool	
GTIN (EAN)	4032248437054		
Qty.	1 ST		

Crimp contacts HD



Crimps provide a electrical and mechanical connection between wire and contact that is both secure and reliable. The optimal crimp connection is gas-tight and corrosion-resistant.

HDC HQ 17 FC

Weidmüller Interface GmbH & Co. KG

Klingenbergstraße 26

D-32758 Detmold

Germany

www.weidmueller.com

Accessories

General ordering data

Type	HDC-C-HD-BM0.14-0.37AG	Version
Order No.	1651570000	Heavy-duty connectors, Crimp contact, HD, HDD, HQ, MixMate,
GTIN (EAN)	4008190400248	Female, Conductor cross-section, max.: 0.37, turned, Copper alloy
Qty.	100 ST	
Type	HDC-C-HD-BM0.5AG	Version
Order No.	1651580000	Heavy-duty connectors, Crimp contact, HD, HDD, HQ, MixMate,
GTIN (EAN)	4008190400255	Female, Conductor cross-section, max.: 0.5, turned, Copper alloy
Qty.	100 ST	
Type	HDC-C-HD-BM0.75-1.00AG	Version
Order No.	1601760000	Heavy-duty connectors, Crimp contact, HD, HDD, HQ, MixMate,
GTIN (EAN)	4008190158354	Female, Conductor cross-section, max.: 1, turned, Copper alloy
Qty.	100 ST	
Type	HDC-C-HD-BM1.5AG	Version
Order No.	1651600000	Heavy-duty connectors, Crimp contact, HD, HDD, HQ, MixMate,
GTIN (EAN)	4008190400279	Female, Conductor cross-section, max.: 1.5, turned, Copper alloy
Qty.	100 ST	
Type	HDC-C-HD-BM2.5AG	Version
Order No.	1651610000	Heavy-duty connectors, Crimp contact, HD, HDD, HQ, MixMate,
GTIN (EAN)	4008190400286	Female, Conductor cross-section, max.: 2.5, turned, Copper alloy
Qty.	100 ST	
Type	HDC-C-HD-BM0.14-0.37AU	Version
Order No.	1651670000	Heavy-duty connectors, Crimp contact, HD, HDD, HQ, MixMate,
GTIN (EAN)	4008190400347	Female, Conductor cross-section, max.: 0.37, turned, Copper alloy
Qty.	100 ST	
Type	HDC-C-HD-BM0.5AU	Version
Order No.	1651680000	Heavy-duty connectors, Crimp contact, HD, HDD, HQ, MixMate,
GTIN (EAN)	4008190400354	Female, Conductor cross-section, max.: 0.5, turned, Copper alloy
Qty.	100 ST	
Type	HDC-C-HD-BM0.75-1.00AU	Version
Order No.	1651690000	Heavy-duty connectors, Crimp contact, HD, HDD, HQ, MixMate,
GTIN (EAN)	4008190400361	Female, Conductor cross-section, max.: 1, turned, Copper alloy
Qty.	100 ST	
Type	HDC-C-HD-BM1.5AU	Version
Order No.	1651700000	Heavy-duty connectors, Crimp contact, HD, HDD, HQ, MixMate,
GTIN (EAN)	4008190400378	Female, Conductor cross-section, max.: 1.5, turned, Copper alloy
Qty.	100 ST	
Type	HDC-C-HD-BM2.5AU	Version
Order No.	1651710000	Heavy-duty connectors, Crimp contact, HD, HDD, HQ, MixMate,
GTIN (EAN)	4008190400385	Female, Conductor cross-section, max.: 2.5, turned, Copper alloy
Qty.	100 ST	