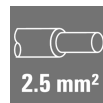
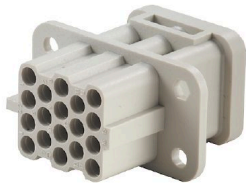


HDC HQ 17 FC**Weidmüller Interface GmbH & Co. KG**Klingenbergstraße 26
D-32758 Detmold
Germany

www.weidmueller.com



The HQ series - big features in a compact design The electrical values speak for themselves. The standard HE crimp contacts can also be used here.

The wire connection level is designed as a crimp contact

The established crimp connection has been used as a standard for decades.

Crimp contacts are not delivered with the inserts.

Pole count: 17 (+PE)

Rated current: 10 A

Rated voltage 250 V

Nominal voltage acc. to UL/CSA: 600 V AC/DC

Crimp connection

General ordering data

Version	HDC insert, Female, 250 V, 10 A, Number of poles: 17, Crimp connection, Installation size: HQ
Order No.	1003200000
Type	HDC HQ 17 FC
GTIN (EAN)	4032248698196
Qty.	1 items

Technical data

Approvals

Approvals



ROHS	Conform
------	---------

UL File Number Search	UL Website
-----------------------	----------------------------

Certificate No. (cURus)	E92202
-------------------------	--------

Dimensions and weights

Depth	41.6 mm	Depth (inches)	1.6378 inch
Height	36.7 mm	Height (inches)	1.4449 inch
Width	22.4 mm	Width (inches)	0.8819 inch
Net weight	14 g		

Temperatures

Limit temperature	-40 °C ... 125 °C
-------------------	-------------------

Environmental Product Compliance

RoHS Compliance Status	Compliant without exemption
------------------------	-----------------------------

REACH SVHC	Potassium perfluorobutane sulfonate 29420-49-3
------------	--

SCIP	1609748e-c278-4c9b-b3d1-e6215d2988cd
------	--------------------------------------

Chemical resistance	Substance	Acetone
	Chemical resistance	Resistant
	Substance	Ammonia, watery
	Chemical resistance	Conditionally resistant
	Substance	Petrol
	Chemical resistance	Resistant
	Substance	Benzene
	Chemical resistance	Resistant
	Substance	Diesel oil
	Chemical resistance	Conditionally resistant
	Substance	Acetic acid, concentrated
	Chemical resistance	Resistant
	Substance	Potassium hydroxide
	Chemical resistance	Conditionally resistant
	Substance	Methanol
	Chemical resistance	Conditionally resistant
	Substance	Motor oil
	Chemical resistance	Conditionally resistant
	Substance	Lye, diluted
	Chemical resistance	Resistant
	Substance	Hydrochlorofluorocarbons
	Chemical resistance	Conditionally resistant
	Substance	Outdoor use
	Chemical resistance	Conditionally resistant

Dimensions

Width	22.4 mm	Total length base	41.6 mm
Height of socket	36.7 mm		

HDC HQ 17 FC

Weidmüller Interface GmbH & Co. KG

Klingenbergstraße 26

D-32758 Detmold

Germany

www.weidmueller.com

Technical data

General data

Number of poles	17	Plugging cycles, silver	≥ 500
Plugging cycles, gold	≥ 500	Type of connection	Crimp connection
Installation size	HQ	UL 94 flammability rating	V-0
Volume resistance	≤4 mΩ	Colour	beige
Insulation resistance	1010 Ω	Insulating material	PC glass-fibre reinforced (UL-listed and railway-certified)
Insulating material group	IIIa	Type	Female
Pollution severity	2	Basic material	Copper alloy
Series	HQ	Rated voltage (DIN EN 61984)	250 V
Rated voltage according to UL/CSA	600 V AC/DC	Rated impulse voltage (DIN EN 61984)	4 kV
Rated current (DIN EN 61984)	10 A	Free from halogens	false
Low smoke acc. DIN EN 45545-2	Yes	BG	HQ

Connection data PE

Connection type PE	Crimp connection	Stripping length PE connection	8 mm
Rated cross-section	2.5 mm ²	Wire cross section, AWG (PE), min.	AWG 26
Wire cross section, AWG (PE), max.	AWG 14		

Version

Wire connection cross section AWG, max.	AWG 14	Stripping length, rated connection	8 mm
Type of connection	Crimp connection	Installation size	HQ
Volume resistance	≤4 mΩ	Wire connection cross section AWG, min.	AWG 26
Wire connection cross section, finely stranded, max.	2.5 mm ²	Wire connection cross section, finely stranded, min.	0.14 mm ²
Conductor cross-section, max.	2.5 mm ²	Conductor cross-section, min.	0.14 mm ²
Basic material	Copper alloy	BG	HQ

Classifications

ETIM 6.0	EC000438	ETIM 7.0	EC000438
ETIM 8.0	EC000438	ETIM 9.0	EC000438
ETIM 10.0	EC000438	ECLASS 9.0	27-44-02-05
ECLASS 9.1	27-44-02-05	ECLASS 10.0	27-44-02-05
ECLASS 11.0	27-44-02-05	ECLASS 12.0	27-44-02-05
ECLASS 13.0	27-44-02-05	ECLASS 14.0	27-44-02-05
ECLASS 15.0	27-44-02-05		