

## HDC C HX BM6.0AG

**Weidmüller Interface GmbH & Co. KG**  
Klingenbergstraße 26  
D-32758 Detmold  
Germany

[www.weidmueller.com](http://www.weidmueller.com)



Crimps provide a electrical and mechanical connection between wire and contact that is both secure and reliable. The optimal crimp connection is gas-tight and corrosion-resistant.

### General ordering data

|            |   |
|------------|---|
| Version    | Heavy-duty connectors, Crimp contact, MixMate, Female, Conductor cross-section, max.: 6, turned, Copper alloy |
| Order No.  | <a href="#">1002980000</a>  |
| Type       | HDC C HX BM6.0AG  |
| GTIN (EAN) | 4032248697267   |
| Qty.       | 25 items  |

**HDC C HX BM6.0AG**

**Weidmüller Interface GmbH & Co. KG**  
 Klingenbergstraße 26  
 D-32758 Detmold  
 Germany

www.weidmueller.com

**Technical data**

**Approvals**

Approvals



ROHS Conform

**Dimensions and weights**

Diameter 6 mm Net weight 2.78 g

**Environmental Product Compliance**

RoHS Compliance Status Compliant with exemption  
 RoHS Exemption (if applicable/known) 6c  
 REACH SVHC Lead 7439-92-1  
 SCIP 6eabd5ae-2d6b-409e-8bdf-87c27ee10e40

**General data**

|                                  |                       |                                    |                   |
|----------------------------------|-----------------------|------------------------------------|-------------------|
| Contact diameter, male Ø         | 4 mm                  | Stripping length, rated connection | 8 mm              |
| Type of connection               | Crimp connection      | Version insert                     | MixMate           |
| Volume resistance                | ≤1 mΩ                 | Conductor cross-section, max.      | 6 mm <sup>2</sup> |
| Conductor cross-section, min.    | 6 mm <sup>2</sup>     | Surface finish                     | silver            |
| Plugging cycles                  | ≥ 500                 | Type                               | Female            |
| Basic material                   | Copper alloy          | Production methods                 | turned            |
| Cross-section for connected wire | 6 - 6 mm <sup>2</sup> | Material of contact                | Copper alloy      |

**Classifications**

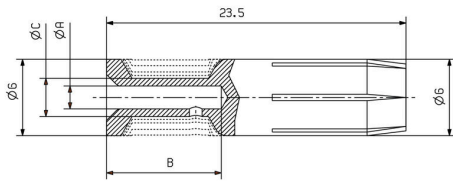
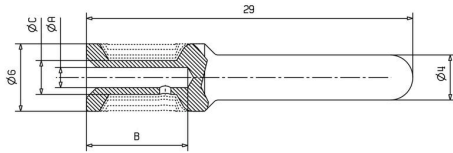
|             |             |             |             |
|-------------|-------------|-------------|-------------|
| ETIM 8.0    | EC000796    | ETIM 9.0    | EC000796    |
| ETIM 10.0   | EC000796    | ECLASS 14.0 | 27-44-02-04 |
| ECLASS 15.0 | 27-44-02-04 |             |             |

**HDC C HX BM6.0AG**

**Weidmüller Interface GmbH & Co. KG**  
Klingenbergstraße 26  
D-32758 Detmold  
Germany

**Drawings**

[www.weidmueller.com](http://www.weidmueller.com)



## HDC C HX BM6.0AG

**Weidmüller Interface GmbH & Co. KG**  
 Klingenbergstraße 26  
 D-32758 Detmold  
 Germany

www.weidmueller.com

## Accessories

### Crimping tools



Crimping tools for turned contacts

- Ratchet guarantees precise crimping
- Release option in the event of incorrect operation
- With stop for exact positioning of the contacts.

### General ordering data

|            |                            |  |  |
|------------|----------------------------|--|--|
| Type       | CTIN CM 1.6/2.5            | Version  |  |
| Order No.  | <a href="#">9205430000</a> | Pressing tool, Crimping tool for contacts, 0.14mm <sup>2</sup> , 6mm <sup>2</sup> , 4-indent crimp |  |
| GTIN (EAN) | 4032248733446              |  |  |
| Qty.       | 1 ST                       |  |  |
| Type       | CTIN CM 3.6                | Version  |  |
| Order No.  | <a href="#">9205440000</a> | Crimping tool for contacts, 1.5mm <sup>2</sup> , 10mm <sup>2</sup> , 4-indent crimp                |  |
| GTIN (EAN) | 4032248734146              |  |  |
| Qty.       | 1 ST                       |  |  |

### Contact removal tools



Weidmüller offers a variety of crimping tools, contact removal tools, and fibre optic tools.

### General ordering data

|            |                            |         |  |
|------------|----------------------------|---------|--|
| Type       | REMOVAL TOOL HX            | Version |  |
| Order No.  | <a href="#">1002990000</a> |         |  |
| GTIN (EAN) | 4032248697274              |         |  |
| Qty.       | 1 ST                       |         |  |

### 2-pole



The HQ series - big features in a compact design. The electrical characteristics speak for themselves. The wire connection level is designed for crimp contacts. The proven crimp connection method has been in standard use for decades. Crimp contacts are not included in the scope of delivery of inserts.

## HDC C HX BM6.0AG

**Weidmüller Interface GmbH & Co. KG**  
 Klingenbergstraße 26  
 D-32758 Detmold  
 Germany

www.weidmueller.com

## Accessories

## General ordering data

|            |                            |   |
|------------|----------------------------|---|
| Type       | HDC HQ 2 FC                | Version   |
| Order No.  | <a href="#">3103510000</a> | HDC insert, Female, 400 V, 40 A, Number of poles: 2, Crimp contact, |
| GTIN (EAN) | 4099987 151238             | Installation size: 1  |
| Qty.       | 1 ST                       |   |
| Type       | HDC HQ 2 MC                | Version   |
| Order No.  | <a href="#">3103500000</a> | HDC insert, Male, 400 V, 40 A, Number of poles: 2, Crimp contact,   |
| GTIN (EAN) | 4099987 151221             | Installation size: 1  |
| Qty.       | 1 ST                       |   |

## 3-pole



The HQ series - big features in a compact design. The electrical characteristics speak for themselves. The wire connection level is designed for crimp contacts. The proven crimp connection method has been in standard use for decades. Crimp contacts are not included in the scope of delivery of inserts.

## General ordering data

|            |                            |   |
|------------|----------------------------|---|
| Type       | HDC HQ 3 FC                | Version   |
| Order No.  | <a href="#">3103530000</a> | HDC insert, Female, 400 V, 40 A, Number of poles: 3, Crimp contact, |
| GTIN (EAN) | 4099987 151252             | Installation size: 1  |
| Qty.       | 1 ST                       |   |
| Type       | HDC HQ 3 MC                | Version   |
| Order No.  | <a href="#">3103520000</a> | HDC insert, Male, 400 V, 40 A, Number of poles: 3, Crimp contact,   |
| GTIN (EAN) | 4099987 151245             | Installation size: 1  |
| Qty.       | 1 ST                       |   |

## 4-pole



The HQ series - big features in a compact design. The electrical characteristics speak for themselves. The wire connection level is designed for crimp contacts. The proven crimp connection method has been in standard use for decades. Crimp contacts are not included in the scope of delivery of inserts.

## General ordering data

|            |                            |   |
|------------|----------------------------|---|
| Type       | HDC HQ 4 FC                | Version   |
| Order No.  | <a href="#">3103550000</a> | HDC insert, Female, 830 V, 40 A, Number of poles: 4, Crimp contact, |
| GTIN (EAN) | 4099987 151559             | Installation size: 1  |
| Qty.       | 1 ST                       |   |
| Type       | HDC HQ 4 MC                | Version   |
| Order No.  | <a href="#">3103540000</a> | HDC insert, Male, 830 V, 40 A, Number of poles: 4, Crimp contact,   |
| GTIN (EAN) | 4099987 151283             | Installation size: 1  |
| Qty.       | 1 ST                       |   |

**HDC C HX BM6.0AG**

**Weidmüller Interface GmbH & Co. KG**  
 Klingenbergstraße 26  
 D-32758 Detmold  
 Germany

www.weidmueller.com

**Accessories**

**4/2-pole**



The HQ series - big features in a compact design. The electrical characteristics speak for themselves. You can also use the proven HD and HX crimp contacts here. The wire connection level is designed for crimp contacts. The proven crimp connection has been in standard use for decades. Crimp contacts are not included in the scope of delivery of inserts.  
 Pole count: 4/2 (+PE)  
 Rated current: 40/10 A  
 Rated voltage: 690 / 250 V  
 Rated voltage acc. to UL/CSA: 600 V AC/DC

**General ordering data**

|            |                            |  |
|------------|----------------------------|--|
| Type       | HDC HQ 4/2 FC              | Version  |
| Order No.  | <a href="#">1003160000</a> | HDC insert, Female, 690 V, 40 A, Number of poles: 6, Crimp connection, Installation size: HQ |
| GTIN (EAN) | 4032248698158              |  |
| Qty.       | 1 ST                       |  |
| Type       | HDC HQ 4/2 MC              | Version  |
| Order No.  | <a href="#">1003170000</a> | HDC insert, Male, 690 V, 40 A, Number of poles: 6, Crimp connection, Installation size: HQ   |
| GTIN (EAN) | 4032248698165              |  |
| Qty.       | 1 ST                       |  |