

**MOFU 35/LO/1 SW**

**Weidmüller Interface GmbH & Co. KG**  
Klingenbergstraße 26  
D-32758 Detmold  
Germany

www.weidmueller.com

**Product image**

We offer a broad portfolio of mounting support for easy handling and supplementation of our products. From various tools to insulating sleeves and various screws, our components are matched to each other down to the last detail and thus facilitate assembly in compliance with the respective standards and protective regulations.

**General ordering data**

Version	Mounting foot (terminal)
Order No.	<a href="#">0646210000</a>
Type	MOFU 35/LO/1 SW
GTIN (EAN)	4008190261887
Qty.	20 items

## MOFU 35/LO/1 SW

**Weidmüller Interface GmbH & Co. KG**  
 Klingenbergstraße 26  
 D-32758 Detmold  
 Germany

www.weidmueller.com

## Technical data

### Approvals

ROHS	Conform
------	---------

### Dimensions and weights

Depth	18.35 mm	Depth (inches)	0.7224 inch
Height	58 mm	Height (inches)	2.2835 inch
Width	18 mm	Width (inches)	0.7087 inch
Net weight	5.6 g		

### Temperatures

Ambient temperature	-5 °C...40 °C	Continuous operating temp., min.	-50 °C
Continuous operating temp., max.	100 °C		

### Environmental Product Compliance

RoHS Compliance Status	Compliant without exemption
REACH SVHC	No SVHC above 0.1 wt%

### Material data

Basic material	Polyamide 66	Insulating material	Wemid
Colour	black	UL 94 flammability rating	V-2

### System specifications

Version	Mounting foot	End cover plate required	No
Mounting rail	TS 35		

### Additional technical data

Open sides	right	Type of fixing	Snap-on
Explosion-tested version	No	Type of mounting	Snap-on

### Conductors for clamping (rated connection)

Connection direction	top	Type of connection	Tension-clamp connection
----------------------	-----	--------------------	--------------------------

### Dimensions

Pitch in mm (P)	18.00 mm
-----------------	----------

### General

Mounting rail	TS 35
---------------	-------

### Classifications

ETIM 8.0	EC002848	ETIM 9.0	EC002848
ETIM 10.0	EC002848	ECLASS 14.0	27-25-03-90
ECLASS 15.0	27-25-03-90		

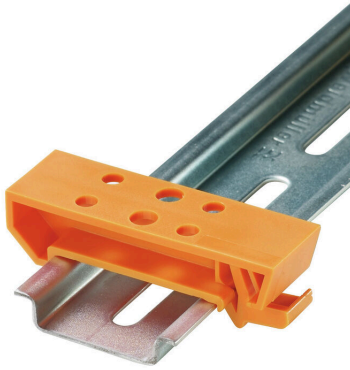
**MOFU 35/LO/1 SW**

**Weidmüller Interface GmbH & Co. KG**  
Klingenbergstraße 26  
D-32758 Detmold  
Germany

[www.weidmueller.com](http://www.weidmueller.com)

**Drawings**

**Product image**



Similar to illustration

**Example of use**

