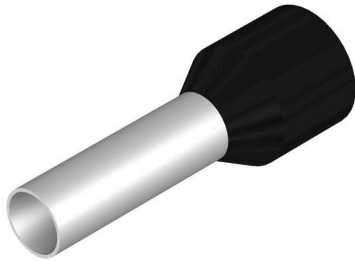


H6,0/20 SW

Weidmüller Interface GmbH & Co. KG
Klingenbergstraße 26
D-32758 Detmold
Germany

www.weidmueller.com



- supplied loose in poly-bag
- Weidmüller colour code
- DIN colour code
- other colour code

General ordering data

| | |
|------------|---|
| Version | Wire-end ferrule, Standard, 14 mm, 12 mm, black |
| Order No. | 0533500000 |
| Type | H6,0/20 SW |
| GTIN (EAN) | 4008 190183905 |
| Qty. | 100 items |
| Packaging | loose |

Technical data

Approvals

Approvals



| | |
|-------------------------|----------------------------|
| ROHS | Conform |
| UL File Number Search | UL Website |
| Certificate no. (cULus) | E499744 |

Dimensions and weights

| | |
|------------|--------|
| Net weight | 0.36 g |
|------------|--------|

Environmental Product Compliance

| | |
|------------------------|-----------------------------|
| RoHS Compliance Status | Compliant without exemption |
| REACH SVHC | No SVHC above 0.1 wt% |

Technical data

| | | | |
|------------------------|---|---------|----------|
| Description of article | Wire end ferrule with plastic collar, black | Version | Standard |
|------------------------|---|---------|----------|

Wire-end ferrules

| | | | |
|-------------------------------|-------------------|---|-------------|
| Contact surface diameter (D1) | 3.5 mm | Contact surface length (L2) | 12 mm |
| Collar diameter (D2) | 6.3 mm | Plastic collar thickness (S2) | 0.3 mm |
| L1 in mm | 20.00 mm | Wire connection cross section AWG, max. | AWG 10 |
| Metal sleeve thickness (S1) | 0.2 mm | Stripping length | 14 mm |
| Conductor cross-section | 6 mm ² | Colour code | Weidmueller |

Classifications

| | | | |
|-------------|-------------|-------------|-------------|
| ETIM 8.0 | EC000005 | ETIM 9.0 | EC000005 |
| ETIM 10.0 | EC000005 | ECLASS 14.0 | 27-40-02-01 |
| ECLASS 15.0 | 27-40-02-01 | | |

Drawing

