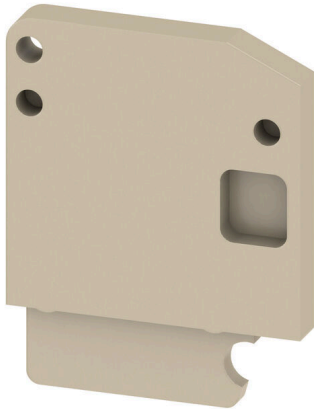


**AP ADK1****Weidmüller Interface GmbH & Co. KG**Klingenbergstraße 26  
D-32758 Detmold  
Germany

www.weidmueller.com



Partition plates and end plates are essential accessories for terminal blocks. Partition plates provide optical and electrical separation of different potentials and functional groups, increasing safety and ensuring a clear structure inside the control cabinet. End plates close the terminal block row on the sides, protect against contact with live parts, and ensure a clean, stable finish. Both components are precisely matched to the respective Weidmüller terminal block series, contributing to safe, compliant, and professional wiring.

**General ordering data**

Version	SAK Series, End plate, 3 mm, beige, Direct mounting
Order No.	<a href="#">0476260000</a>
Type	AP ADK1
GTIN (EAN)	4008190158194
Qty.	50 items
Delivery status	This article will no longer be available in the future.
Available until	2026-06-30T00:00:00+02:00

## AP ADK1

**Weidmüller Interface GmbH & Co. KG**  
 Klingenbergstraße 26  
 D-32758 Detmold  
 Germany

www.weidmueller.com

## Technical data

### Approvals

ROHS	Conform
------	---------

### Dimensions and weights

Depth	28.1 mm	Depth (inches)	1.1063 inch
Height	22 mm	Height (inches)	0.8661 inch
Width	3 mm	Width (inches)	0.1181 inch
Net weight	1.01 g		

### Temperatures

Storage temperature	-25 °C...55 °C	Ambient temperature	-50 °C...55 °C
Continuous operating temp., min.	-50 °C	Continuous operating temp., max.	100 °C

### Environmental Product Compliance

RoHS Compliance Status	Compliant without exemption		
REACH SVHC	No SVHC above 0.1 wt%		
Product Carbon Footprint	Cradle to gate	0.014 kg CO2eq.	

### Material data

Basic material	PA 66	Colour	beige
UL 94 flammability rating	V-2		

### System specifications

Version	End plate
---------	-----------

### Additional technical data

Snap-on	Yes	Installation advice	Direct mounting
---------	-----	---------------------	-----------------

### General

Installation advice	Direct mounting
---------------------	-----------------

### Classifications

ETIM 8.0	EC000886	ETIM 9.0	EC000886
ETIM 10.0	EC000886	ECLASS 14.0	27-25-03-01
ECLASS 15.0	27-25-03-01		