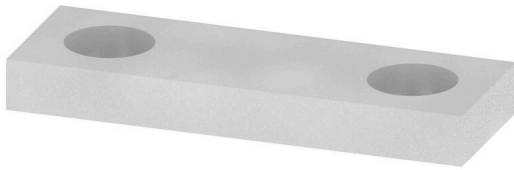


**QL 2 SAK16****Weidmüller Interface GmbH & Co. KG**

Klingenbergstraße 26

D-32758 Detmold

Germany

[www.weidmueller.com](http://www.weidmueller.com)

The distribution or multiplication of a potential to adjoining terminal blocks is realized via a cross-connection. Additional wiring effort can be easily avoided. Even if the poles are broken out, contact reliability in the terminal blocks is still ensured. Our portfolio offers pluggable and screwable cross-connection systems for modular terminal blocks.

**General ordering data**

Version	Cross-connector (terminal), when screwed in, grey, 76 A, Number of poles: 2, Pitch in mm (P): 6.00, Insulated: No, Width: 17.9 mm
Order No.	<a href="#">0470700000</a>
Type	QL 2 SAK16
GTIN (EAN)	4008190182618
Qty.	50 items

## Technical data

### Approvals

ROHS	Conform
------	---------

### Dimensions and weights

Depth	2 mm	Depth (inches)	0.0787 inch
Height	6 mm	Height (inches)	0.2362 inch
Width	17.9 mm	Width (inches)	0.7047 inch
Net weight	1.49 g		

### Temperatures

Storage temperature	-25 °C...55 °C	Ambient temperature	-5 °C...40 °C
---------------------	----------------	---------------------	---------------

### Environmental Product Compliance

RoHS Compliance Status	Compliant without exemption
REACH SVHC	No SVHC above 0.1 wt%

### Material data

Basic material	Cu Zn	Colour	grey
----------------	-------	--------	------

### System specifications

Version	for cross-connection link
---------	---------------------------

### Additional technical data

Type of fixing	when screwed in	Installation advice	Direct mounting
Explosion-tested version	No		

### Dimensions

Pitch in mm (P)	6.00 mm
-----------------	---------

### General

Number of poles	2	Installation advice	Direct mounting
-----------------	---	---------------------	-----------------

### Rating data

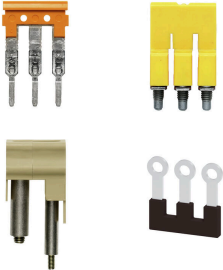
Nominal current	76 A
-----------------	------

### Classifications

ETIM 8.0	EC000489	ETIM 9.0	EC000489
ETIM 10.0	EC000489	ECLASS 14.0	27-25-03-03
ECLASS 15.0	27-25-03-03		

## Accessories

### Cross-connections



The distribution or multiplication of a potential to adjoining terminal blocks is realized via a cross-connection. Additional wiring effort can be easily avoided. Even if the poles are broken out, contact reliability in the terminal blocks is still ensured. Our portfolio offers pluggable and screwable cross-connection systems for modular terminal blocks.

### General ordering data

Type	VH 12/4.9/3.3	Version
Order No.	<a href="#">0249000000</a>	Connecting sleeve (terminal), when screwed in, Width: 4.9 mm,
GTIN (EAN)	4008190129507	Height: 4.9 mm, Depth: 12 mm, Number of poles: 1, Copper
Qty.	100 ST	
Type	KISC M3X20.5/10 EK4	Version
Order No.	<a href="#">0303000000</a>	Clamping yoke, Mounting screw, Steel
GTIN (EAN)	4008190163686	
Qty.	100 ST	
Type	SS M3 D 128-A 3	Version
Order No.	<a href="#">0164400000</a>	Lock washer, Copper
GTIN (EAN)	4008190035914	
Qty.	50 ST	