

QL 2 SAK16

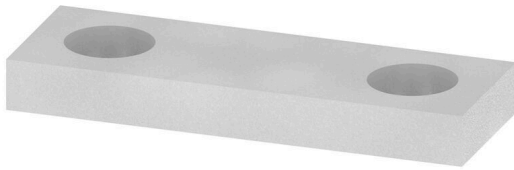
Weidmüller Interface GmbH & Co. KG

Klingenbergstraße 26

D-32758 Detmold

Germany

www.weidmueller.com



In contrast to the terminal blocks with integrated disconnect lever, our disconnect plugs can be completely detached or removed from the terminal block and the respective application and offer a flexible alternative solution to our standard disconnectors.

General ordering data

Version	Cross-connector (terminal), when screwed in, grey, 76 A, Number of poles: 2, Pitch in mm (P): 6.00, Insulated: No, Width: 17.9 mm
Order No.	0470700000
Type	QL 2 SAK16
GTIN (EAN)	4008190182618
Qty.	50 items

QL 2 SAK16

Weidmüller Interface GmbH & Co. KG

Klingenbergstraße 26
D-32758 Detmold
Germany

www.weidmueller.com

Technical data

Approvals

ROHS	Conform
------	---------

Dimensions and weights

Depth	2 mm	Depth (inches)	0.0787 inch
Height	6 mm	Height (inches)	0.2362 inch
Width	17.9 mm	Width (inches)	0.7047 inch
Net weight	1.49 g		

Temperatures

Storage temperature	-25 °C...55 °C	Ambient temperature	-5 °C...40 °C
---------------------	----------------	---------------------	---------------

Environmental Product Compliance

RoHS Compliance Status	Compliant without exemption
REACH SVHC	No SVHC above 0.1 wt%

Material data

Basic material	Cu Zn	Colour	grey
----------------	-------	--------	------

System specifications

Version	for cross-connection link
---------	---------------------------

Additional technical data

Type of fixing	when screwed in	Installation advice	Direct mounting
Explosion-tested version	No		

Dimensions

Pitch in mm (P)	6.00 mm
-----------------	---------

General

Number of poles	2	Installation advice	Direct mounting
-----------------	---	---------------------	-----------------

Rating data

Rated voltage	400 V	Nominal current	76 A
---------------	-------	-----------------	------

Classifications

ETIM 8.0	EC000489	ETIM 9.0	EC000489
ETIM 10.0	EC000489	ECLASS 14.0	27-25-03-03
ECLASS 15.0	27-25-03-03		

QL 2 SAK16

Weidmüller Interface GmbH & Co. KG

Klingenbergstraße 26

D-32758 Detmold

Germany

www.weidmueller.com

Accessories

Cross-connections



The distribution or multiplication of a potential to adjoining terminal blocks is realized via a cross-connection. Additional wiring effort can be easily avoided. Even if the poles are broken out, contact reliability in the terminal blocks is still ensured. Our portfolio offers pluggable and screwable cross-connection systems for modular terminal blocks.

General ordering data

Type	VH 12/4.9/3.3	Version	
Order No.	0249000000	Connecting sleeve (terminal), when screwed in, Width: 4.9 mm,	
GTIN (EAN)	4008190129507	Height: 4.9 mm, Depth: 12 mm, Number of poles: 1, Copper	
Qty.	100 ST		
Type	KISC M3X20.5/10 EK4	Version	
Order No.	0303000000	Clamping yoke, Mounting screw, Steel	
GTIN (EAN)	4008190163686		
Qty.	100 ST		

Disconnect plugs



In contrast to the terminal blocks with integrated disconnect lever, our disconnect plugs can be completely detached or removed from the terminal block and the respective application and offer a flexible alternative solution to our standard disconnectors.

General ordering data

Type	SS M3 D 128-A 3	Version	
Order No.	0164400000	Lock washer, Copper	
GTIN (EAN)	4008190035914		
Qty.	50 ST		