

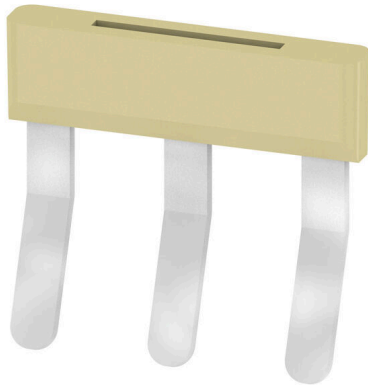
QB 3 WI RA8 IS**Weidmüller Interface GmbH & Co. KG**

Klingenbergstraße 26

D-32758 Detmold

Germany

www.weidmueller.com



The distribution or multiplication of a potential to adjoining terminal blocks is realized via a cross-connection. Additional wiring effort can be easily avoided. Even if the poles are broken out, contact reliability in the terminal blocks is still ensured. Our portfolio offers pluggable and screwable cross-connection systems for modular terminal blocks.

General ordering data

Version	Cross-connector (terminal), when screwed in, grey, 27 A, Number of poles: 3, Pitch in mm (P): 8.00, Insulated: Yes, Width: 3 mm
Order No.	0461200000
Type	QB 3 WI RA8 IS
GTIN (EAN)	4008190161699
Qty.	50 items

QB 3 WI RA8 IS

Weidmüller Interface GmbH & Co. KG
Klingenbergstraße 26
D-32758 Detmold
Germany

www.weidmueller.com

Technical data

Approvals

ROHS	Conform
------	---------

Dimensions and weights

Depth	19 mm	Depth (inches)	0.748 inch
Height	20 mm	Height (inches)	0.7874 inch
Width	3 mm	Width (inches)	0.1181 inch
Net weight	1.26 g		

Temperatures

Storage temperature	-25 °C...55 °C	Ambient temperature	-50 °C...55 °C
Continuous operating temp., min.	-50 °C	Continuous operating temp., max.	100 °C

Environmental Product Compliance

RoHS Compliance Status	Compliant without exemption
REACH SVHC	No SVHC above 0.1 wt%

Material data

Basic material	PA 66	Colour	grey
UL 94 flammability rating	V-2		

System specifications

Version	Cross-connector
---------	-----------------

Additional technical data

Type of fixing	when screwed in	Installation advice	Direct mounting
Explosion-tested version	No	Type of mounting	when screwed in

Dimensions

Pitch in mm (P)	8.00 mm
-----------------	---------

General

Number of poles	3	Installation advice	Direct mounting
-----------------	---	---------------------	-----------------

Rating data

Rated voltage	400 V	Nominal current	27 A
---------------	-------	-----------------	------

Classifications

ETIM 8.0	EC000489	ETIM 9.0	EC000489
ETIM 10.0	EC000489	ECLASS 14.0	27-25-03-03
ECLASS 15.0	27-25-03-03		