

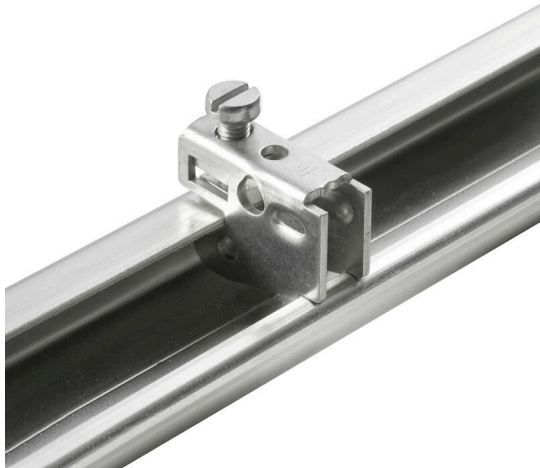
MEW 1/32

Weidmüller Interface GmbH & Co. KG

Klingenbergstraße 26
D-32758 Detmold
Germany

www.weidmueller.com

Product image



Weidmüller's range of products includes end brackets that guarantee a permanent, reliable mounting on the terminal rail and prevent sliding. Versions with and without screws are available. The end brackets include marking options, also for group markers, and also a test plug holder.

General ordering data

Version	End bracket, grey, TS 32, None, Steel, Width: 10.5 mm, 100 °C
Order No.	0445600000
Type	MEW 1/32
GTIN (EAN)	4008190178093
Qty.	20 items

Technical data

Approvals

ROHS	Conform
------	---------

Dimensions and weights

Depth	29 mm	Depth (inches)	1.1417 inch
Height	30 mm	Height (inches)	1.1811 inch
Width	10.5 mm	Width (inches)	0.4134 inch
Net weight	17.75 g		

Temperatures

Ambient temperature	-5 °C...40 °C	Continuous operating temp., max.	100 °C
---------------------	---------------	----------------------------------	--------

Environmental Product Compliance

RoHS Compliance Status	Compliant without exemption
REACH SVHC	No SVHC above 0.1 wt%

Material data

Basic material	Steel	Colour	grey
UL 94 flammability rating	None		

System specifications

Version	For the terminals	Mounting rail	TS 32
---------	-------------------	---------------	-------

Additional technical data

Installation advice	Direct mounting	Type of mounting	when screwed in
Locking	for screw fixing		

General

Installation advice	Direct mounting	Mounting rail	TS 32
---------------------	-----------------	---------------	-------

Classifications

ETIM 8.0	EC001041	ETIM 9.0	EC001041
ETIM 10.0	EC001041	ECLASS 14.0	27-25-03-02
ECLASS 15.0	27-25-03-02		