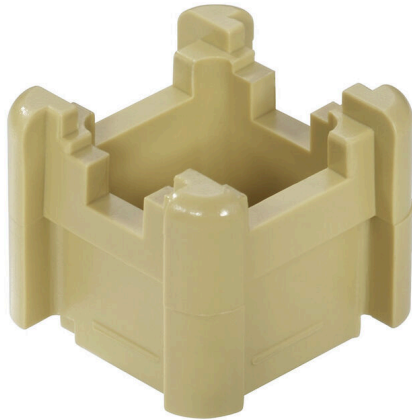


SO SH1**Weidmüller Interface GmbH & Co. KG**

Klingenbergstraße 26

D-32758 Detmold

Germany

www.weidmueller.com**Product image**

The comprehensive accessories of the Klippon® Connect portfolio are perfectly matched down to the last detail. This facilitates mounting while adhering to required norms

General ordering data

Version	Busbar support, grey, 100 °C, Width: 24.5 mm, V-2, Polyamide 66, when screwed in
Order No.	0401460000
Type	SO SH1
GTIN (EAN)	4008190188092
Qty.	20 items

SO SH1

Weidmüller Interface GmbH & Co. KG
 Klingenbergstraße 26
 D-32758 Detmold
 Germany

www.weidmueller.com

Technical data

Approvals

ROHS	Conform
------	---------

Dimensions and weights

Depth	20.6 mm	Depth (inches)	0.811 inch
Height	24.5 mm	Height (inches)	0.9646 inch
Width	24.5 mm	Width (inches)	0.9646 inch
Net weight	4.38 g		

Temperatures

Ambient temperature	-5 °C...40 °C	Continuous operating temp., min.	-50 °C
Continuous operating temp., max.	100 °C		

Environmental Product Compliance

RoHS Compliance Status	Compliant without exemption
REACH SVHC	No SVHC above 0.1 wt%

Material data

Basic material	Polyamide 66	Colour	grey
UL 94 flammability rating	V-2		

System specifications

Version	For the mounting rails	Mounting rail	TS 15
---------	------------------------	---------------	-------

Additional technical data

Type of mounting	when screwed in
------------------	-----------------

Conductors for clamping (rated connection)

Type of connection	Miscellaneous
--------------------	---------------

General

Number of poles	1	Mounting rail	TS 15
-----------------	---	---------------	-------

Classifications

ETIM 8.0	EC001166	ETIM 9.0	EC001166
ETIM 10.0	EC001166	ECLASS 14.0	27-40-06-07
ECLASS 15.0	27-40-06-07		

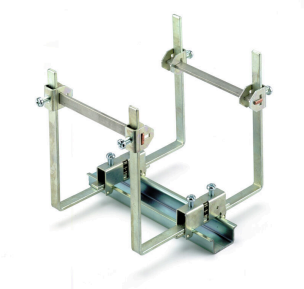
SO SH1

Weidmüller Interface GmbH & Co. KG
Klingenbergstraße 26
D-32758 Detmold
Germany

Accessories

www.weidmueller.com

Accessories



The comprehensive accessories of the Klippon® Connect portfolio are perfectly matched down to the last detail. This facilitates mounting while adhering to required norms

General ordering data

Type	KLBU SH1	Version	
Order No.	063590000	Accessories, Clamping yoke for shield connection	
GTIN (EAN)	4008190192204		
Qty.	500 ST		
Type	KLBU SH1	Version	
Order No.	063596000	Accessories, Clamping yoke for shield connection	
GTIN (EAN)	4008190007140		
Qty.	20 ST		