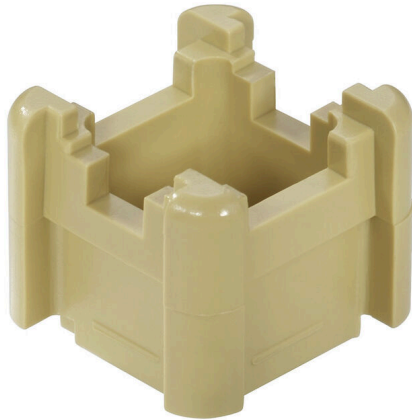


SO SH1

Weidmüller Interface GmbH & Co. KG
Klingenbergstraße 26
D-32758 Detmold
Germany

www.weidmueller.com

Product image

The comprehensive accessories of the Klippon® Connect portfolio are perfectly matched down to the last detail. This facilitates mounting while adhering to required norms

General ordering data

Version	Busbar support, grey, 100 °C, Width: 24.5 mm, V-2, Polyamide 66, when screwed in
Order No.	0401460000
Type	SO SH1
GTIN (EAN)	4008190188092
Qty.	20 items

SO SH1

Weidmüller Interface GmbH & Co. KG
 Klingenbergstraße 26
 D-32758 Detmold
 Germany

www.weidmueller.com

Technical data

Approvals

ROHS	Conform
------	---------

Dimensions and weights

Depth	20.6 mm	Depth (inches)	0.811 inch
Height	24.5 mm	Height (inches)	0.9646 inch
Width	24.5 mm	Width (inches)	0.9646 inch
Net weight	4.38 g		

Temperatures

Ambient temperature	-5 °C...40 °C	Continuous operating temp., min.	-50 °C
Continuous operating temp., max.	100 °C		

Environmental Product Compliance

RoHS Compliance Status	Compliant without exemption
REACH SVHC	No SVHC above 0.1 wt%

Material data

Basic material	Polyamide 66	Colour	grey
UL 94 flammability rating	V-2		

System specifications

Version	For the mounting rails	Mounting rail	TS 15
---------	------------------------	---------------	-------

Additional technical data

Type of mounting	when screwed in
------------------	-----------------

Conductors for clamping (rated connection)

Type of connection	Miscellaneous
--------------------	---------------

General

Number of poles	1	Mounting rail	TS 15
-----------------	---	---------------	-------

Classifications

ETIM 8.0	EC001166	ETIM 9.0	EC001166
ETIM 10.0	EC001166	ECLASS 14.0	27-40-06-07
ECLASS 15.0	27-40-06-07		