

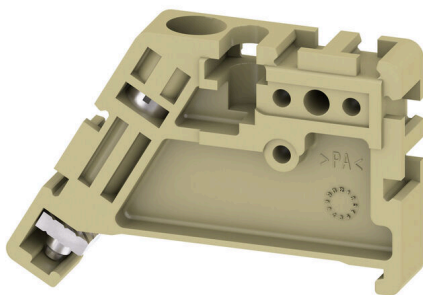
**EW 35****Weidmüller Interface GmbH & Co. KG**

Klingenbergstraße 26

D-32758 Detmold

Germany

www.weidmueller.com

**Product image**

Weidmüller's range of products includes end brackets that guarantee a permanent, reliable mounting on the terminal rail and prevent sliding. Versions with and without screws are available. The end brackets include marking options, also for group markers, and also a test plug holder.

**General ordering data**

Version	End bracket, beige, TS 35, V-2, Wemid, Width: 8.5 mm, 100 °C
Order No.	<a href="#">0383560000</a>
Type	EW 35
GTIN (EAN)	4008190181314
Qty.	50 items

## EW 35

**Weidmüller Interface GmbH & Co. KG**  
 Klingenbergstraße 26  
 D-32758 Detmold  
 Germany

www.weidmueller.com

## Technical data

## Approvals

ROHS	Conform
------	---------

## Dimensions and weights

Depth	27 mm	Depth (inches)	1.063 inch
Height	46 mm	Height (inches)	1.811 inch
Width	8.5 mm	Width (inches)	0.3346 inch
Net weight	5.32 g		

## Temperatures

Ambient temperature	-5 °C...40 °C	Continuous operating temp., min.	-50 °C
Continuous operating temp., max.	100 °C		

## Environmental Product Compliance

RoHS Compliance Status	Compliant without exemption		
REACH SVHC	No SVHC above 0.1 wt%		
Product Carbon Footprint	Cradle to gate	0.044 kg CO2 eq.	

## Material data

Basic material	Wemid	Colour	beige
UL 94 flammability rating	V-2		

## System specifications

Version	For the terminals	Mounting rail	TS 35
---------	-------------------	---------------	-------

## Additional technical data

Installation advice	Direct mounting	Type of mounting	when screwed in
Locking	for screw fixing		

## Conductors for clamping (rated connection)

Tightening torque, max.	0.6 Nm	Tightening torque, min.	0.5 Nm
-------------------------	--------	-------------------------	--------

## Dimensions

TS 35 offset	22.5 mm
--------------	---------

## General

Installation advice	Direct mounting	Mounting rail	TS 35
---------------------	-----------------	---------------	-------

## Classifications

ETIM 8.0	EC001041	ETIM 9.0	EC001041
ETIM 10.0	EC001041	ECLASS 14.0	27-25-03-02
ECLASS 15.0	27-25-03-02		