

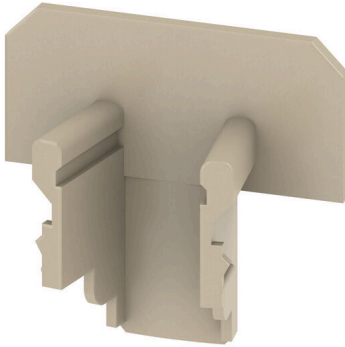
**TSCH 4 AKZ4****Weidmüller Interface GmbH & Co. KG**

Klingenbergstraße 26

D-32758 Detmold

Germany

www.weidmueller.com

**Product image**

Partition plates and end plates are essential accessories for terminal blocks. Partition plates provide optical and electrical separation of different potentials and functional groups, increasing safety and ensuring a clear structure inside the control cabinet. End plates close the terminal block row on the sides, protect against contact with live parts, and ensure a clean, stable finish. Both components are precisely matched to the respective Weidmüller terminal block series, contributing to safe, compliant, and professional wiring.

**General ordering data**

Version	Small partition (terminal), PA 66, beige, Continuous operating temp., max.: 100 °C
Order No.	<a href="#">0363360000</a>
Type	TSCH 4 AKZ4
GTIN (EAN)	4008190136680
Qty.	100 items

## TSCH 4 AKZ4

**Weidmüller Interface GmbH & Co. KG**  
 Klingenbergstraße 26  
 D-32758 Detmold  
 Germany

www.weidmueller.com

## Technical data

## Approvals

ROHS	Conform
------	---------

## Dimensions and weights

Depth	15 mm	Depth (inches)	0.5906 inch
Height	16 mm	Height (inches)	0.6299 inch
Width	6 mm	Width (inches)	0.2362 inch
Net weight	0.18 g		

## Temperatures

Storage temperature	-25 °C...55 °C	Ambient temperature	-50 °C...55 °C
Continuous operating temp., min.	-50 °C	Continuous operating temp., max.	100 °C

## Environmental Product Compliance

RoHS Compliance Status	Compliant without exemption
REACH SVHC	No SVHC above 0.1 wt%

## Material data

Basic material	PA 66	Colour	beige
UL 94 flammability rating	V-2		

## System specifications

Version	End and intermediate plate
---------	----------------------------

## Additional technical data

Snap-on	Yes	Installation advice	Direct mounting
---------	-----	---------------------	-----------------

## General

Installation advice	Direct mounting
---------------------	-----------------

## Classifications

ETIM 8.0	EC000886	ETIM 9.0	EC000886
ETIM 10.0	EC000886	ECLASS 14.0	27-25-03-01
ECLASS 15.0	27-25-03-01		