

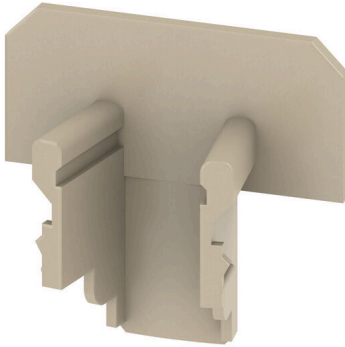
TSCH 4 AKZ4**Weidmüller Interface GmbH & Co. KG**

Klingenbergstraße 26

D-32758 Detmold

Germany

www.weidmueller.com

Product image

Partition plates and end plates are essential accessories for terminal blocks. Partition plates provide optical and electrical separation of different potentials and functional groups, increasing safety and ensuring a clear structure inside the control cabinet. End plates close the terminal block row on the sides, protect against contact with live parts, and ensure a clean, stable finish. Both components are precisely matched to the respective Weidmüller terminal block series, contributing to safe, compliant, and professional wiring.

General ordering data

Version	Small partition (terminal), PA 66, beige, Continuous operating temp., max.: 100 °C
Order No.	0363360000
Type	TSCH 4 AKZ4
GTIN (EAN)	4008190136680
Qty.	100 items

Technical data

Approvals

ROHS	Conform
------	---------

Dimensions and weights

Depth	15 mm	Depth (inches)	0.5906 inch
Height	16 mm	Height (inches)	0.6299 inch
Width	6 mm	Width (inches)	0.2362 inch
Net weight	0.18 g		

Temperatures

Storage temperature	-25 °C...55 °C	Ambient temperature	-50 °C...55 °C
Continuous operating temp., min.	-50 °C	Continuous operating temp., max.	100 °C

Environmental Product Compliance

RoHS Compliance Status	Compliant without exemption
REACH SVHC	No SVHC above 0.1 wt%

Material data

Basic material	PA 66	Colour	beige
UL 94 flammability rating	V-2		

System specifications

Version	End and intermediate plate
---------	----------------------------

Additional technical data

Snap-on	Yes	Installation advice	Direct mounting
---------	-----	---------------------	-----------------

General

Installation advice	Direct mounting
---------------------	-----------------

Classifications

ETIM 8.0	EC000886	ETIM 9.0	EC000886
ETIM 10.0	EC000886	ECLASS 14.0	27-25-03-01
ECLASS 15.0	27-25-03-01		