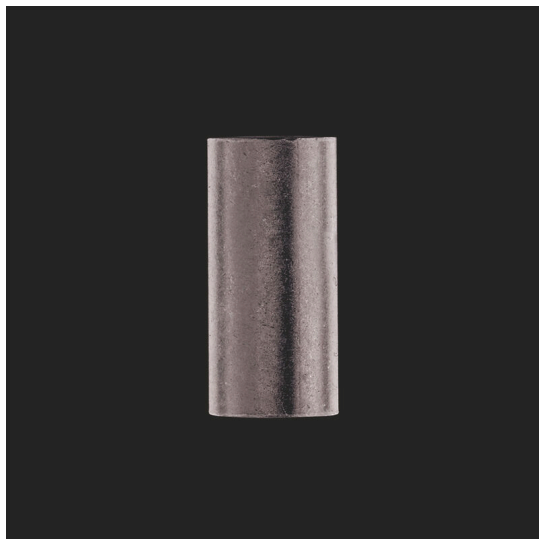


Product image

The distribution or multiplication of a potential to adjoining terminal blocks is realized via a cross-connection. Additional wiring effort can be easily avoided. Even if the poles are broken out, contact reliability in the terminal blocks is still ensured. Our portfolio offers pluggable and screwable cross-connection systems for modular terminal blocks.

General ordering data

Version	Connecting sleeve (terminal), when screwed in, Width: 6 mm, Height: 6 mm, Depth: 19 mm, Number of poles: 1, Cu Zn
Order No.	0318000000
Type	VH 19/6.3/4.3
GTIN (EAN)	4008190059460
Qty.	50 items

Technical data

Approvals

ROHS	Conform
------	---------

Dimensions and weights

Depth	19 mm	Depth (inches)	0.748 inch
Height	6 mm	Height (inches)	0.2362 inch
Width	6 mm	Width (inches)	0.2362 inch
Diameter	6 mm	Net weight	2.77 g

Temperatures

Storage temperature	-25 °C...55 °C	Ambient temperature	-5 °C...40 °C
---------------------	----------------	---------------------	---------------

Environmental Product Compliance

RoHS Compliance Status	Compliant with exemption
RoHS Exemption (if applicable/known)	6c
REACH SVHC	Lead 7439-92-1
SCIP	73c55621-8329-401d-bde2-7fd78e0e60e4

Material data

Basic material	Cu Zn	Colour	grey
----------------	-------	--------	------

System specifications

Version	for cross-connection link
---------	---------------------------

Additional technical data

Type of fixing	when screwed in	Installation advice	Direct mounting
Explosion-tested version	No		

Dimensions

Diameter	6 mm
----------	------

General

Number of poles	1	Installation advice	Direct mounting
-----------------	---	---------------------	-----------------

Classifications

ETIM 8.0	EC002848	ETIM 9.0	EC002848
ETIM 10.0	EC002848	ECLASS 14.0	27-25-03-90
ECLASS 15.0	27-25-03-90		