

QL 2 RSF1+2

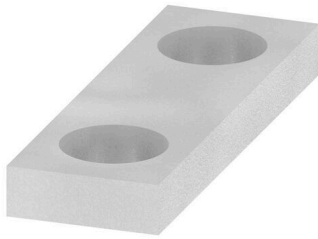
Weidmüller Interface GmbH & Co. KG

Klingenbergstraße 26

D-32758 Detmold

Germany

www.weidmueller.com



In contrast to the terminal blocks with integrated disconnect lever, our disconnect plugs can be completely detached or removed from the terminal block and the respective application and offer a flexible alternative solution to our standard disconnectors.

General ordering data

Version	Cross-connector (terminal), when screwed in, grey, 57 A, Number of poles: 2, Pitch in mm (P): 11.00, Insulated: No, Width: 18 mm
Order No.	0267400000
Type	QL 2 RSF1+2
GTIN (EAN)	4008190139988
Qty.	50 items

QL 2 RSF1+2

Weidmüller Interface GmbH & Co. KG
 Klingenbergstraße 26
 D-32758 Detmold
 Germany

www.weidmueller.com

Technical data

Approvals

ROHS	Conform
------	---------

Dimensions and weights

Depth	2 mm	Depth (inches)	0.0787 inch
Height	6 mm	Height (inches)	0.2362 inch
Width	18 mm	Width (inches)	0.7087 inch
Net weight	1.38 g		

Temperatures

Storage temperature	-25 °C...55 °C	Ambient temperature	-5 °C...40 °C
---------------------	----------------	---------------------	---------------

Environmental Product Compliance

RoHS Compliance Status	Compliant without exemption
REACH SVHC	No SVHC above 0.1 wt%

Material data

Basic material	Cu Zn	Colour	grey
----------------	-------	--------	------

System specifications

Version	Cross-connector
---------	-----------------

Additional technical data

Type of fixing	when screwed in	Installation advice	Direct mounting
Explosion-tested version	No	Type of mounting	when screwed in

Dimensions

Pitch in mm (P)	11.00 mm
-----------------	----------

General

Number of poles	2	Installation advice	Direct mounting
-----------------	---	---------------------	-----------------

Rating data

Nominal current	57 A
-----------------	------

Classifications

ETIM 8.0	EC000489	ETIM 9.0	EC000489
ETIM 10.0	EC000489	ECLASS 14.0	27-25-03-03
ECLASS 15.0	27-25-03-03		