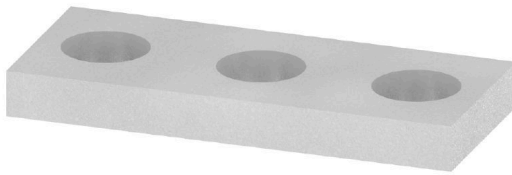


**QL 3 SAKD2.5N****Weidmüller Interface GmbH & Co. KG**

Klingenbergstraße 26

D-32758 Detmold

Germany

[www.weidmueller.com](http://www.weidmueller.com)

The distribution or multiplication of a potential to adjoining terminal blocks is realized via a cross-connection. Additional wiring effort can be easily avoided. Even if the poles are broken out, contact reliability in the terminal blocks is still ensured. Our portfolio offers pluggable and screwable cross-connection systems for modular terminal blocks.

**General ordering data**

|                 |   |
|-----------------|---|
| Version         | Cross-connector (terminal), when screwed in, grey, 24 A, Number of poles: 3, Pitch in mm (P): 6.00, Insulated: No, Width: 14.6 mm |
| Order No.       | <a href="#">0215900000</a>  |
| Type            | QL 3 SAKD2.5N   |
| GTIN (EAN)      | 4008190085506   |
| Qty.            | 100 items   |
| Delivery status | This article will no longer be available in the future.   |
| Available until | 2026-06-30T00:00:00+02:00   |

## QL 3 SAKD2.5N

Weidmüller Interface GmbH &amp; Co. KG

Klingenbergstraße 26

D-32758 Detmold

Germany

www.weidmueller.com

## Technical data

## Approvals

|      |         |
|------|---------|
| ROHS | Conform |
|------|---------|

## Dimensions and weights

|            |         |                 |             |
|------------|---------|-----------------|-------------|
| Depth      | 1.5 mm  | Depth (inches)  | 0.0591 inch |
| Height     | 6 mm    | Height (inches) | 0.2362 inch |
| Width      | 14.6 mm | Width (inches)  | 0.5748 inch |
| Net weight | 0.83 g  |                 |             |

## Temperatures

|                     |                |                     |               |
|---------------------|----------------|---------------------|---------------|
| Storage temperature | -25 °C...55 °C | Ambient temperature | -5 °C...40 °C |
|---------------------|----------------|---------------------|---------------|

## Environmental Product Compliance

|                                      |                                      |
|--------------------------------------|--------------------------------------|
| RoHS Compliance Status               | Compliant with exemption             |
| RoHS Exemption (if applicable/known) | 6c                                   |
| REACH SVHC                           | Lead 7439-92-1                       |
| SCIP                                 | 86596b21-b817-43a9-8e4c-ac00e41b9a24 |

## Material data

|                |       |        |      |
|----------------|-------|--------|------|
| Basic material | Cu Zn | Colour | grey |
|----------------|-------|--------|------|

## System specifications

|         |                 |
|---------|-----------------|
| Version | Cross-connector |
|---------|-----------------|

## Additional technical data

|                          |                 |                     |                 |
|--------------------------|-----------------|---------------------|-----------------|
| Type of fixing           | when screwed in | Installation advice | Direct mounting |
| Explosion-tested version | No              | Type of mounting    | when screwed in |

## Dimensions

|                 |         |
|-----------------|---------|
| Pitch in mm (P) | 6.00 mm |
|-----------------|---------|

## General

|                 |   |                     |                 |
|-----------------|---|---------------------|-----------------|
| Number of poles | 3 | Installation advice | Direct mounting |
|-----------------|---|---------------------|-----------------|

## Rating data

|               |       |                 |      |
|---------------|-------|-----------------|------|
| Rated voltage | 400 V | Nominal current | 24 A |
|---------------|-------|-----------------|------|

## Classifications

|             |             |             |             |
|-------------|-------------|-------------|-------------|
| ETIM 6.0    | EC000489    | ETIM 7.0    | EC000489    |
| ETIM 8.0    | EC000489    | ETIM 9.0    | EC000489    |
| ETIM 10.0   | EC000489    | ECLASS 9.0  | 27-14-11-40 |
| ECLASS 9.1  | 27-14-11-40 | ECLASS 10.0 | 27-14-11-40 |
| ECLASS 11.0 | 27-14-11-40 | ECLASS 12.0 | 27-14-11-40 |
| ECLASS 13.0 | 27-25-03-03 | ECLASS 14.0 | 27-25-03-03 |
| ECLASS 15.0 | 27-25-03-03 |             |             |

**Accessories****Mounting support**

We offer a broad portfolio of mounting support for easy handling and supplementation of our products. From various tools to insulating sleeves and various screws, our components are matched to each other down to the last detail and thus facilitate assembly in compliance with the respective standards and protective regulations.

**General ordering data**

|            |                            |  |
|------------|----------------------------|--|
| Type       | KISC M2.5X15/5.5 SAKD      | Version  |
| Order No.  | <a href="#">0367700000</a> | Mounting screw (Terminal), 2.50 mm, Steel, Depth: 3.8 mm, Width: |
| GTIN (EAN) | 4008190170844              | 4.5 mm, Height: 15 mm  |
| Qty.       | 100 ST                     |  |