

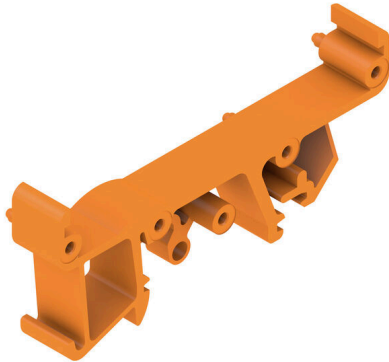
**RF RS 70 MI/A6 OR****Weidmüller Interface GmbH & Co. KG**

Klingenbergstraße 26

D-32758 Detmold

Germany

www.weidmueller.com



The RS 70 profile is a pluggable, modular system for the mounting rail that can be flexibly extended to the required length. It consists of intermediate sections in various lengths. Optionally with or without snap-in foot, as well as end plates with integrated marking option. The PCB is inserted from the side, while the permanently integrated latching feet enable stable fastening.

**General ordering data**

Version	Clip-in foot, RS 70 orange, Intermediate part, Clip-in foot, Width: 13.7 mm
Order No.	<a href="#">0213760000</a>
Type	RF RS 70 MI/A6 OR
GTIN (EAN)	4008190148850
Qty.	20 items

## RF RS 70 MI/A6 OR

**Weidmüller Interface GmbH & Co. KG**  
 Klingenbergstraße 26  
 D-32758 Detmold  
 Germany

www.weidmueller.com

## Technical data

### Approvals

ROHS	Conform
------	---------

### Dimensions and weights

Depth	28.6 mm	Depth (inches)	1.126 inch
Height	70 mm	Height (inches)	2.7559 inch
Height of lowest version	32 mm	Width	13.7 mm
Width (inches)	0.5394 inch	Net weight	4.8 g

### Environmental Product Compliance

RoHS Compliance Status	Compliant without exemption
REACH SVHC	No SVHC above 0.1 wt%

### Material data

UL 94 flammability rating	V-2	Insulating material	PA 66
Surface finish	untreated	Basic material	PA 66
Comparative Tracking Index (CTI)	600 ≤ CTI		

### General data

Colour	orange	Protection degree	IP00
Mounting rail	TS 32, TS 35	Colour chart (similar)	RAL 2000
Encapsulation option	No		

### Classifications

ETIM 8.0	EC002779	ETIM 9.0	EC002779
ETIM 10.0	EC002779	ECLASS 14.0	27-19-06-04
ECLASS 15.0	27-19-06-04		

RF RS 70 MI/A6 OR

Weidmüller Interface GmbH & Co. KG  
Klingenbergstraße 26  
D-32758 Detmold  
Germany

Drawings

[www.weidmueller.com](http://www.weidmueller.com)

LOCKING-FOOT MIDDLE

