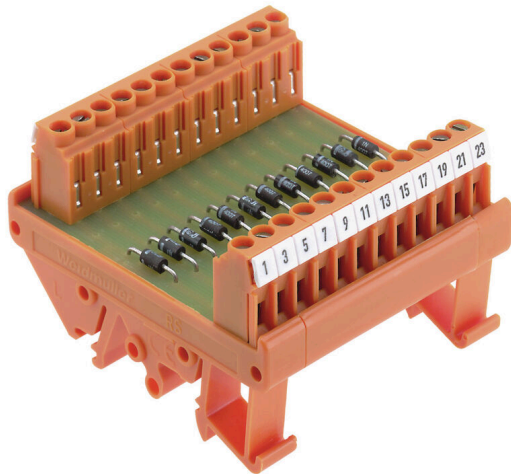


RSD 12 LP/LP

Weidmüller Interface GmbH & Co. KG
Klingenbergstraße 26
D-32758 Detmold
Germany

www.weidmueller.com



Similar to illustration

Interfaces with diodes for surge voltage protection, lamp testing or protection against reversed polarity.

General ordering data

Version	Interface, RSD, Free diode, Screw connection
Order No.	0181461001
Type	RSD 12 LP/LP
GTIN (EAN)	4032248047406
Qty.	1 items

RSD 12 LP/LP

Weidmüller Interface GmbH & Co. KG

Klingenbergstraße 26

D-32758 Detmold

Germany

www.weidmueller.com

Technical data

Approvals

Approvals



ROHS	Conform
UL File Number Search	UL Website
Certificate No. (UR)	E141197

Dimensions and weights

Depth	42 mm	Depth (inches)	1.6535 inch
Height	70 mm	Height (inches)	2.7559 inch
Width	65 mm	Width (inches)	2.5591 inch
Net weight	71.48 g		

Temperatures

Storage temperature	-40...60 °C	Operating temperature	0...55 °C
---------------------	-------------	-----------------------	-----------

Environmental Product Compliance

RoHS Compliance Status	Compliant with exemption
RoHS Exemption (if applicable/known)	7a
REACH SVHC	Lead 7439-92-1
SCIP	c81824f0-4ab4-46d2-8ea1-d0fb421fd3a2

Rated data UL

Rated current I _N	1 A	Operating temperature UL, min.	-25 °C
Operating temperature UL, max.	50 °C	Rated current I _{max}	1 A
Rated voltage U _N	142 V		

Connection data

Type of component	Diode 1N4007	Configuration	Through diode
-------------------	--------------	---------------	---------------

Rating Data

Rated voltage	230 V	Rated current per connection	1 A
Components	Diode	Value	1N4007
Max. recurring peak voltage	1000 V		

Insulation coordination (EN50178)

According to	DIN EN 50178	Rated insulation voltage	230 V
Surge voltage category	II	Pollution severity level	2
Pulse voltage test (1,2/50µs)	2 kV	Insulation test voltage AC	0.35 kV

Connection field

Min. wire cross-section, AWG	AWG 26	Type of connection	Screw connection
Sleeve with plastic collar, max.	2.5 mm ²	Flexible with sleeve, min.	0.5 mm ²
Flexible with sleeve, max.	2.5 mm ²	Flexible, max. H05(07) V-K	4 mm ²
Flexible, min. H05(07) V-K	0.5 mm ²	Solid, max. H05(07) V-U	6 mm ²

RSD 12 LP/LP**Weidmüller Interface GmbH & Co. KG**Klingenbergstraße 26
D-32758 Detmold
Germanywww.weidmueller.com**Technical data**

Solid, min. H05(07) V-U	0.5 mm ²	Stripping length	6 mm
Tightening torque, max.	0.6 Nm	Tightening torque, min.	0.5 Nm
Clamping range, max.	6 mm ²	Clamping range, min.	0.5 mm ²
Max. wire cross-section, AWG	AWG 12		

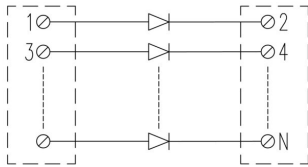
Standard features

Design	Diode gate
--------	------------

Classifications

ETIM 8.0	EC002780	ETIM 9.0	EC002780
ETIM 10.0	EC002780	ECLASS 14.0	27-14-11-52
ECLASS 15.0	27-14-11-52		

Drawings



RSD 12 LP/LP

Weidmüller Interface GmbH & Co. KG

Klingenbergstraße 26

D-32758 Detmold

Germany

www.weidmueller.com

Accessories

Steel



Steel DIN rails are the most widespread on the market. Among metal DIN rails, they have the lowest shortcircuit protection, similar to stainless steel.

General ordering data

Type	TS 32X15 2M/ST/ZN	Version	
Order No.	0122800000	Terminal rail, Accessories, Steel, galvanic zinc plated and passivated,	
GTIN (EAN)	4008190066307	Width: 2000 mm, Height: 33 mm, Depth: 15 mm	
Qty.	20 M		

End bracket



Weidmüller's range of products includes end brackets that guarantee a permanent, reliable mounting on the terminal rail and prevent sliding. Versions with and without screws are available. The end brackets include marking options, also for group markers, and also a test plug holder.

General ordering data

Type	EWK 2	Version	
Order No.	0199360000	End bracket, beige, TS 32, V-0, Wemid, Width: 15 mm, 100 °C	
GTIN (EAN)	4008190023546		
Qty.	50 ST		

Steel



Steel DIN rails are the most widespread on the market. Among metal DIN rails, they have the lowest shortcircuit protection, similar to stainless steel.

General ordering data

Type	TS 35X7.5 2M/ST/ZN	Version	
Order No.	0383400000	Terminal rail, Accessories, Steel, galvanic zinc plated and passivated,	
GTIN (EAN)	4008190088026	Width: 2000 mm, Height: 35 mm, Depth: 7.5 mm	
Qty.	40 M		

RSD 12 LP/LP

Weidmüller Interface GmbH & Co. KG
 Klingenbergstraße 26
 D-32758 Detmold
 Germany

www.weidmueller.com

Accessories

End bracket



Weidmüller's range of products includes end brackets that guarantee a permanent, reliable mounting on the terminal rail and prevent sliding. Versions with and without screws are available. The end brackets include marking options, also for group markers, and also a test plug holder.

General ordering data

Type	EW 35	Version	
Order No.	0383560000	End bracket, beige, TS 35, V-2, Wemid, Width: 8.5 mm, 100 °C	
GTIN (EAN)	4008190181314		
Qty.	50 ST		

Steel



Steel DIN rails are the most widespread on the market. Among metal DIN rails, they have the lowest shortcircuit protection, similar to stainless steel.

General ordering data

Type	TS 35X15/2.3 2M/ST/ZN	Version	
Order No.	0498000000	Terminal rail, Accessories, Steel, galvanic zinc plated and passivated, Width: 2000 mm, Height: 35 mm, Depth: 15 mm	
GTIN (EAN)	4008190042493		
Qty.	20 M		