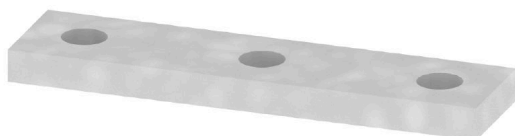


QL 3 SAK70**Weidmüller Interface GmbH & Co. KG**

Klingenbergstraße 26

D-32758 Detmold

Germany

www.weidmueller.com

The distribution or multiplication of a potential to adjoining terminal blocks is realized via a cross-connection. Additional wiring effort can be easily avoided. Even if the poles are broken out, contact reliability in the terminal blocks is still ensured. Our portfolio offers pluggable and screwable cross-connection systems for modular terminal blocks.

General ordering data

Version	Cross-connector (terminal), when screwed in, grey, 180 A, Number of poles: 3, Pitch in mm (P): 14.00, Insulated: No, Width: 58 mm
Order No.	0167000000
Type	QL 3 SAK70
GTIN (EAN)	4008190001018
Qty.	5 items
Delivery status	This article will no longer be available in the future.
Available until	2026-06-30T00:00:00+02:00

Technical data

Approvals

ROHS	Conform
------	---------

Dimensions and weights

Depth	4 mm	Depth (inches)	0.1575 inch
Height	14 mm	Height (inches)	0.5512 inch
Width	58 mm	Width (inches)	2.2835 inch
Net weight	25.2 g		

Temperatures

Storage temperature	-25 °C...55 °C	Ambient temperature	-5 °C...40 °C
---------------------	----------------	---------------------	---------------

Environmental Product Compliance

RoHS Compliance Status	Compliant with exemption
RoHS Exemption (if applicable/known)	6c
REACH SVHC	Lead 7439-92-1
SCIP	86596b21-b817-43a9-8e4c-ac00e41b9a24

Material data

Basic material	Cu Zn	Colour	grey
----------------	-------	--------	------

System specifications

Version	for cross-connection link
---------	---------------------------

Additional technical data

Type of fixing	when screwed in	Installation advice	Direct mounting
Explosion-tested version	No		

Dimensions

Pitch in mm (P)	14.00 mm
-----------------	----------

General

Number of poles	3	Installation advice	Direct mounting
-----------------	---	---------------------	-----------------

Rating data

Nominal current	180 A
-----------------	-------

Classifications

ETIM 6.0	EC000489	ETIM 7.0	EC000489
ETIM 8.0	EC000489	ETIM 9.0	EC000489
ETIM 10.0	EC000489	ECLASS 9.0	27-14-11-40
ECLASS 9.1	27-14-11-40	ECLASS 10.0	27-14-11-40
ECLASS 11.0	27-14-11-40	ECLASS 12.0	27-14-11-40
ECLASS 13.0	27-25-03-03	ECLASS 14.0	27-25-03-03
ECLASS 15.0	27-25-03-03		

Accessories**Mounting support**

We offer a broad portfolio of mounting support for easy handling and supplementation of our products. From various tools to insulating sleeves and various screws, our components are matched to each other down to the last detail and thus facilitate assembly in compliance with the respective standards and protective regulations.

General ordering data

Type	BFSC M5X45	Version
Order No.	0345600000	Mounting screw (Terminal), 5.00 mm, Steel, Depth: 8.5 mm, Width:
GTIN (EAN)	4008190058739	8.5 mm, Height: 45 mm
Qty.	20 ST	
Type	SS M5 D 128-A 5	Version
Order No.	0346100000	Lock washer, Copper
GTIN (EAN)	4008190137199	
Qty.	50 ST	