

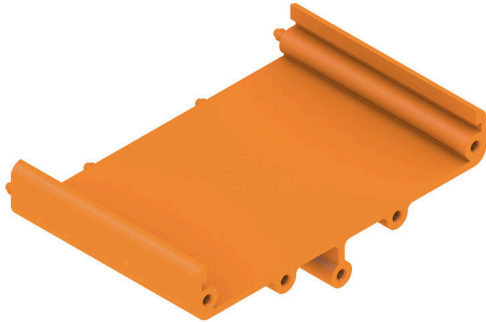
ZW 45 RS OR**Weidmüller Interface GmbH & Co. KG**

Klingenbergstraße 26

D-32758 Detmold

Germany

www.weidmueller.com



The RS 70 profile is a pluggable, modular system for the mounting rail that can be flexibly extended to the required length. It consists of intermediate sections in various lengths. Optionally with or without snap-in foot, as well as end plates with integrated marking option. The PCB is inserted from the side, while the permanently integrated latching feet enable stable fastening.

General ordering data

Version	Intermediate part, RS 70 orange, Intermediate part, Width: 48.7 mm
Order No.	0120060000
Type	ZW 45 RS OR
GTIN (EAN)	4008 1901 14404
Qty.	20 items

ZW 45 RS OR

Weidmüller Interface GmbH & Co. KG

Klingenbergstraße 26
D-32758 Detmold
Germany

www.weidmueller.com

Technical data

Approvals

ROHS	Conform
------	---------

Dimensions and weights

Depth	20.6 mm	Depth (inches)	0.811 inch
Height	70 mm	Height (inches)	2.7559 inch
Width	48.7 mm	Width (inches)	1.9173 inch
Net weight	11.2 g		

Environmental Product Compliance

RoHS Compliance Status	Compliant without exemption
REACH SVHC	No SVHC above 0.1 wt%

Material data

UL 94 flammability rating	V-2	Insulating material	PA 66
Surface finish	untreated	Basic material	PA 66
Comparative Tracking Index (CTI)	600 ≤ CTI		

General data

Colour	orange	Protection degree	IP00
Colour chart (similar)	RAL 2000	Encapsulation option	No

Important note

Product information	<p>Height: TS 32 = 33.5 mm, TS 35x7.5 = 29 mm Dimensions of the PCB: PCB thickness: 1.6 (±0.2) mm PCB length: 67.8 (-0.2) mm Intermediary piece width = PCB width minus 2 x 9 mm (clip-in foot) Example: PCB width = 68 mm, intermediary piece width = 50 mm, intermediary pieces 2x ZW 25 RS or ZW 45 RS + ZW 5 RS</p>
---------------------	---

Classifications

ETIM 8.0	EC002779	ETIM 9.0	EC002779
ETIM 10.0	EC002779	ECLASS 14.0	27-19-06-04
ECLASS 15.0	27-19-06-04		