

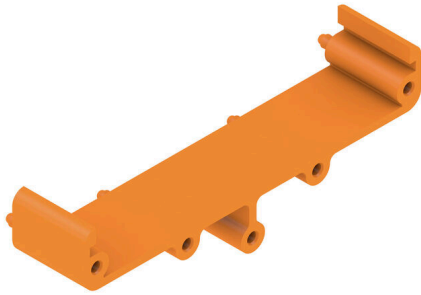
**ZW 15 RS OR 1665****Weidmüller Interface GmbH & Co. KG**

Klingenbergstraße 26

D-32758 Detmold

Germany

www.weidmueller.com



The RS 70 profile is a pluggable, modular system for the mounting rail that can be flexibly extended to the required length. It consists of intermediate sections in various lengths. Optionally with or without snap-in foot, as well as end plates with integrated marking option. The PCB is inserted from the side, while the permanently integrated latching feet enable stable fastening.

**General ordering data**

Version	Intermediate part, RS 70 orange, Intermediate part, Width: 18.7 mm
Order No.	<a href="#">0119860000</a>
Type	ZW 15 RS OR 1665
GTIN (EAN)	4008 190049898
Qty.	20 items

## ZW 15 RS OR 1665

**Weidmüller Interface GmbH & Co. KG**  
 Klingenbergstraße 26  
 D-32758 Detmold  
 Germany

www.weidmueller.com

## Technical data

### Approvals

ROHS	Conform
------	---------

### Dimensions and weights

Depth	20.6 mm	Depth (inches)	0.811 inch
Height	70 mm	Height (inches)	2.7559 inch
Width	18.7 mm	Width (inches)	0.7362 inch
Net weight	3.7 g		

### Environmental Product Compliance

RoHS Compliance Status	Compliant without exemption
REACH SVHC	No SVHC above 0.1 wt%

### Material data

UL 94 flammability rating	V-2	Insulating material	PA 66
Surface finish	untreated	Basic material	PA 66
Comparative Tracking Index (CTI)	600 ≤ CTI		

### General data

Colour	orange	Protection degree	IP00
Colour chart (similar)	RAL 2000	Encapsulation option	No

### Important note

Product information	<p>Height: TS 32 = 33.5 mm, TS 35x7.5 = 29 mm          Dimensions of the PCB:          PCB thickness: 1.6 (±0.2) mm          PCB length: 67.8 (-0.2) mm          Intermediary piece width = PCB width minus 2 x 9 mm (clip-in foot)          Example:          PCB width = 68 mm, intermediary piece width = 50 mm, intermediary pieces 2x ZW 25 RS or ZW 45 RS + ZW 5 RS</p>
---------------------	---

### Classifications

ETIM 8.0	EC002779	ETIM 9.0	EC002779
ETIM 10.0	EC002779	ECLASS 14.0	27-19-06-04
ECLASS 15.0	27-19-06-04		

**ZW 15 RS OR 1665**

**Weidmüller Interface GmbH & Co. KG**  
Klingenbergstraße 26  
D-32758 Detmold  
Germany

**Drawings**

[www.weidmueller.com](http://www.weidmueller.com)

