

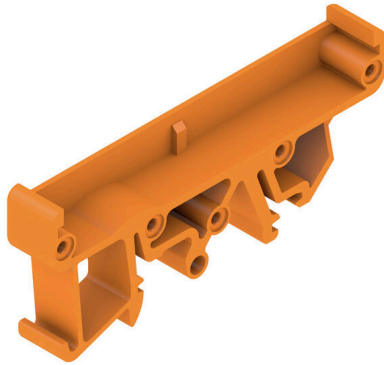
RF RS 70 LI/A2/O.SG OR 1665**Weidmüller Interface GmbH & Co. KG**

Klingenbergstraße 26

D-32758 Detmold

Germany

www.weidmueller.com



The RS 70 profile is a pluggable, modular system for the mounting rail that can be flexibly extended to the required length. It consists of intermediate sections in various lengths. Optionally with or without snap-in foot, as well as end plates with integrated marking option. The PCB is inserted from the side, while the permanently integrated latching feet enable stable fastening.

General ordering data

Version	Clip-in foot, RS 70 orange, End plate DIN mounting rail left, Width: 10 mm
Order No.	0119660000
Type	RF RS 70 LI/A2/O.SG OR 1665
GTIN (EAN)	4008190096106
Qty.	20 items

RF RS 70 LI/A2/O.SG OR 1665

Weidmüller Interface GmbH & Co. KG
 Klingenbergstraße 26
 D-32758 Detmold
 Germany

www.weidmueller.com

Technical data

Approvals

ROHS	Conform
------	---------

Dimensions and weights

Depth	28.6 mm	Depth (inches)	1.126 inch
Height	70 mm	Height (inches)	2.7559 inch
Height of lowest version	32 mm	Width	10 mm
Width (inches)	0.3937 inch	Net weight	5.04 g

Environmental Product Compliance

RoHS Compliance Status	Compliant without exemption
REACH SVHC	No SVHC above 0.1 wt%

Material data

UL 94 flammability rating	V-2	Insulating material	PA 66
Surface finish	untreated	Basic material	PA 66
Comparative Tracking Index (CTI)	600 ≤ CTI		

General data

Colour	orange	Protection degree	IP00
Mounting rail	TS 32, TS 35	Colour chart (similar)	RAL 2000
Encapsulation option	No		

Classifications

ETIM 8.0	EC002779	ETIM 9.0	EC002779
ETIM 10.0	EC002779	ECLASS 14.0	27-19-06-02
ECLASS 15.0	27-19-06-02		

