

RJ45C5 R1U 2.2N4N RL

Weidmüller Interface GmbH & Co. KG

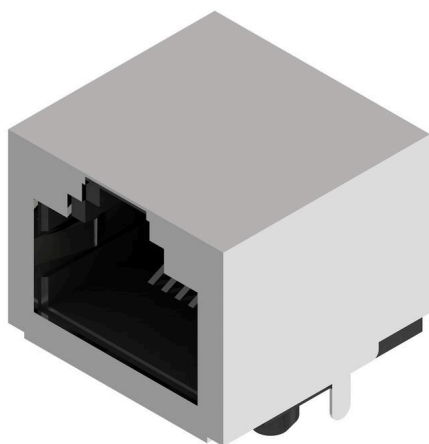
Klingenbergstraße 26

D-32758 Detmold

Germany

www.weidmueller.com

产品图片



产品范围包括下列设计：

- 90°，平式（水平）和 180°，立式（垂直）
- 栓锁向上 / 栓锁向下
- THT、THR 或 SMD 焊接工艺
- 多种不同的设计类型，也可集成 LED 和屏蔽接触片
- 性能类别 Cat. 3 至 Cat. 6
- 包装规格为托盘（TY）或卷装（卷带包装，RL）
- 与模块式 RJ45 连接器兼容，符合 ANSI / TIA-1096-A 和 IEC 60603 标准
- 介电强度 ≥ 1500 V AC RMS（2250 V AC 峰值），符合 IEEE 802.3 标准
- 介电强度 ≥ 1500 V AC（峰值）或 ≥ 1500 V DC，符合 IEC 60603 标准

特性和优势：

- 温度范围增大：-40°C 至 +85°C，确保最大的性能
- 增强型镀金层（30 μ m），改善防腐蚀保护
- 至少 0.3 mm 的基准距确保完美的焊接效果

通用订货数据

版本	OMNIMATE 数据 - RJ45 模块式接口, PCB 接插件, Cat. 5, THT/THR 焊接联接, 90°, 顶部, 无, 不, 插拔次数: 750, 回路数: 8, PA 9T, 30...80 μ m / ≥ 30 μ m, Tape
订货号	3066290000
类型	RJ45C5 R1U 2.2N4N RL
GTIN (EAN)	4099987063128
数量	240 items
包装	Tape

RJ45C5 R1U 2.2N4N RL

Weidmüller Interface GmbH & Co. KG
Klingenbergstraße 26
D-32758 Detmold
Germany

www.weidmueller.com

技术数据

审批

ROHS 一致

尺寸和重量

深	15.7 mm	深度 (英寸)	0.6181 inch
高度	13.11 mm	高度 (英寸)	0.5161 inch
宽度	16.4 mm	宽度 (英寸)	0.6457 inch
净重	8.19 g		

环保产品合规

RoHS 合规状态 合规, 无例外
REACH SVHC 不超过 0.1 wt% 的高度关注物质 (SVHC)

标准

连接器标准 IEC 60603-7

电气特性

电源连接器耐压强度, 触点-触点, 最小	1500 V DC	介电强度, 触点-触点	1000 V DC
通道电阻	<25 mΩ	绝缘电阻	≥ 500 MΩ
额定电压	125 V	PoE / PoE+	符合 IEEE 802.3at

系统规格

回路数	8	LED	不
焊脚长度 (l)	2.2 mm	安装在印刷电路板上	THT/THR 焊接联接
间距 P (单位: inch)	0.050 "	屏蔽材料	黄铜材质
屏蔽	是	侧面端, 属性	焊接法兰
焊接孔直径公差 (D)	± .1 mm	每回路的焊脚数目	1
联接类型	焊接联接	目录册	Cat. 5
产品系列	OMNIMATE 数据 - RJ45 模块式接口	间距 P (单位: mm)	1.02 mm
防护等级	IP20	插拔次数	750
出线方向	90°	屏蔽层表面	经镀镍处理的
屏蔽片	无	性能类别	Cat. 5
焊接工艺	回流焊, 手动焊接, 波峰焊	栓锁选项	顶部
焊针规格	八角形		

材料数据

绝缘材料	PA 9T	颜色编码	黑色
比色表 (相似)	RAL 9011	绝缘材料组	II
相比漏电起痕指数 (CTI)	≥ 500	绝缘电阻	≥ 500 MΩ
Moisture Level (MSL)	1	阻燃等级符合 UL 94	V-0
插针材料	磷铜合金	触点材料	铜合金
插针镀层	镍, 镀金	焊接连接的焊层结构	30...80 μ"
插头触点叠层结构	30...80 μ" / ≥ 30 μ"	最低存放温度	-40 °C
最高存放温度	85 °C	最低操作温度	-40 °C
最高操作温度	85 °C		

RJ45C5 R1U 2.2N4N RL

Weidmüller Interface GmbH & Co. KG
Klingenbergstraße 26
D-32758 Detmold
Germany

www.weidmueller.com

技术数据

包装

包装	Tape	VPE 长度	354.00 mm
VPE 宽度	345.00 mm	VPE 高度	129.00 mm

重要注意事项

--

备注

--

分类

ETIM 8.0	EC002637	ETIM 9.0	EC002637
ETIM 10.0	EC002637	ECLASS 14.0	27-46-02-01
ECLASS 15.0	27-46-02-01		

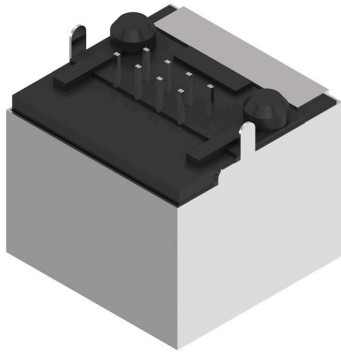
RJ45C5 R1U 2.2N4N RL

Weidmüller Interface GmbH & Co. KG
Klingenbergstraße 26
D-32758 Detmold
Germany

www.weidmueller.com

图纸

产品图片



RJ45C5 R1U 2.2N4N RL

Weidmüller Interface GmbH & Co. KG
Klingenbergstraße 26
D-32758 Detmold
Germany

图纸

www.weidmueller.com

RJ45	G1	R	1	U	3.2	E	4	GY/GY	TY	RJ45G1 R1U 3.2E4GY/GY TY																											
										<table><tr><td>Packaging</td><td>TY RL</td><td>Tray in box (manual assembly) Tape on Reel (automated assembly)</td></tr><tr><td>LED</td><td>Y/G G/Y GY/GY O/G R/O ... N</td><td>Yellow/Green Green/Yellow (standard) Green-Yellow/Green-Yellow Orange/Green Red/Orange ... (further combinations possible) without LED</td></tr><tr><td>Contact surface thickness</td><td>4</td><td>1 = 3µ", 2 = 6µ", 3 = 15µ", 4 = 30µ", 5 = 50µ"</td></tr><tr><td>EMI tabs (ground fingers)</td><td>E N</td><td>E = with EMI tabs N = without EMI tabs</td></tr><tr><td>Solder Pin length</td><td>3.2 1.6 D</td><td>3.2 mm 1.6 mm SMD</td></tr><tr><td>Direction, latch style</td><td>U D V Y</td><td>Horizontal (90°, side entry), latch up Horizontal (90°, side entry), latch down Vertical (180°, top entry) Diagonal (45°), latch up</td></tr><tr><td>Number of Ports</td><td>1 12; 14; ... 21; 41; ...</td><td>1 Port multi ports side by side, Multiport multi ports about each other, Multilevel</td></tr><tr><td>Assembly on PCB</td><td>R S T</td><td>Through Hole Reflow - THR Soldering process: Wave or Reflow soldering Surface Mount Technology - SMT Soldering process: Reflow soldering Through Hole Technology - THT Soldering process: Wave</td></tr><tr><td>Performance Category</td><td>C5 C6 C6A C5e M G1 G10 U MP MP+</td><td>Category 5 Category 6 Category 6A Category 5e 10/100 Mbit 10/100/1000 Mbit 10 Gbit Unshielded 10/100 Mbit with POE 10/100 Mbit with POE+</td></tr></table>	Packaging	TY RL	Tray in box (manual assembly) Tape on Reel (automated assembly)	LED	Y/G G/Y GY/GY O/G R/O ... N	Yellow/Green Green/Yellow (standard) Green-Yellow/Green-Yellow Orange/Green Red/Orange ... (further combinations possible) without LED	Contact surface thickness	4	1 = 3µ", 2 = 6µ", 3 = 15µ", 4 = 30µ", 5 = 50µ"	EMI tabs (ground fingers)	E N	E = with EMI tabs N = without EMI tabs	Solder Pin length	3.2 1.6 D	3.2 mm 1.6 mm SMD	Direction, latch style	U D V Y	Horizontal (90°, side entry), latch up Horizontal (90°, side entry), latch down Vertical (180°, top entry) Diagonal (45°), latch up	Number of Ports	1 12; 14; ... 21; 41; ...	1 Port multi ports side by side, Multiport multi ports about each other, Multilevel	Assembly on PCB	R S T	Through Hole Reflow - THR Soldering process: Wave or Reflow soldering Surface Mount Technology - SMT Soldering process: Reflow soldering Through Hole Technology - THT Soldering process: Wave	Performance Category	C5 C6 C6A C5e M G1 G10 U MP MP+	Category 5 Category 6 Category 6A Category 5e 10/100 Mbit 10/100/1000 Mbit 10 Gbit Unshielded 10/100 Mbit with POE 10/100 Mbit with POE+
Packaging	TY RL	Tray in box (manual assembly) Tape on Reel (automated assembly)																																			
LED	Y/G G/Y GY/GY O/G R/O ... N	Yellow/Green Green/Yellow (standard) Green-Yellow/Green-Yellow Orange/Green Red/Orange ... (further combinations possible) without LED																																			
Contact surface thickness	4	1 = 3µ", 2 = 6µ", 3 = 15µ", 4 = 30µ", 5 = 50µ"																																			
EMI tabs (ground fingers)	E N	E = with EMI tabs N = without EMI tabs																																			
Solder Pin length	3.2 1.6 D	3.2 mm 1.6 mm SMD																																			
Direction, latch style	U D V Y	Horizontal (90°, side entry), latch up Horizontal (90°, side entry), latch down Vertical (180°, top entry) Diagonal (45°), latch up																																			
Number of Ports	1 12; 14; ... 21; 41; ...	1 Port multi ports side by side, Multiport multi ports about each other, Multilevel																																			
Assembly on PCB	R S T	Through Hole Reflow - THR Soldering process: Wave or Reflow soldering Surface Mount Technology - SMT Soldering process: Reflow soldering Through Hole Technology - THT Soldering process: Wave																																			
Performance Category	C5 C6 C6A C5e M G1 G10 U MP MP+	Category 5 Category 6 Category 6A Category 5e 10/100 Mbit 10/100/1000 Mbit 10 Gbit Unshielded 10/100 Mbit with POE 10/100 Mbit with POE+																																			

图例